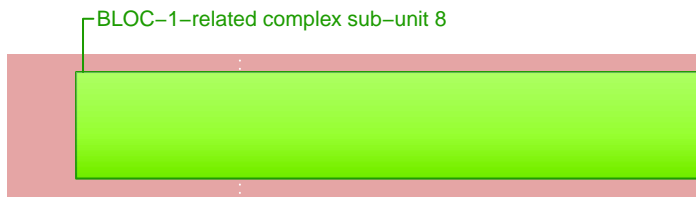


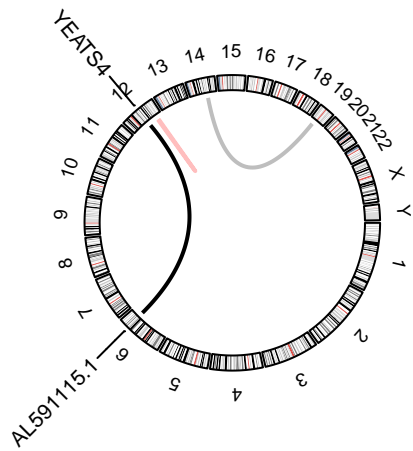
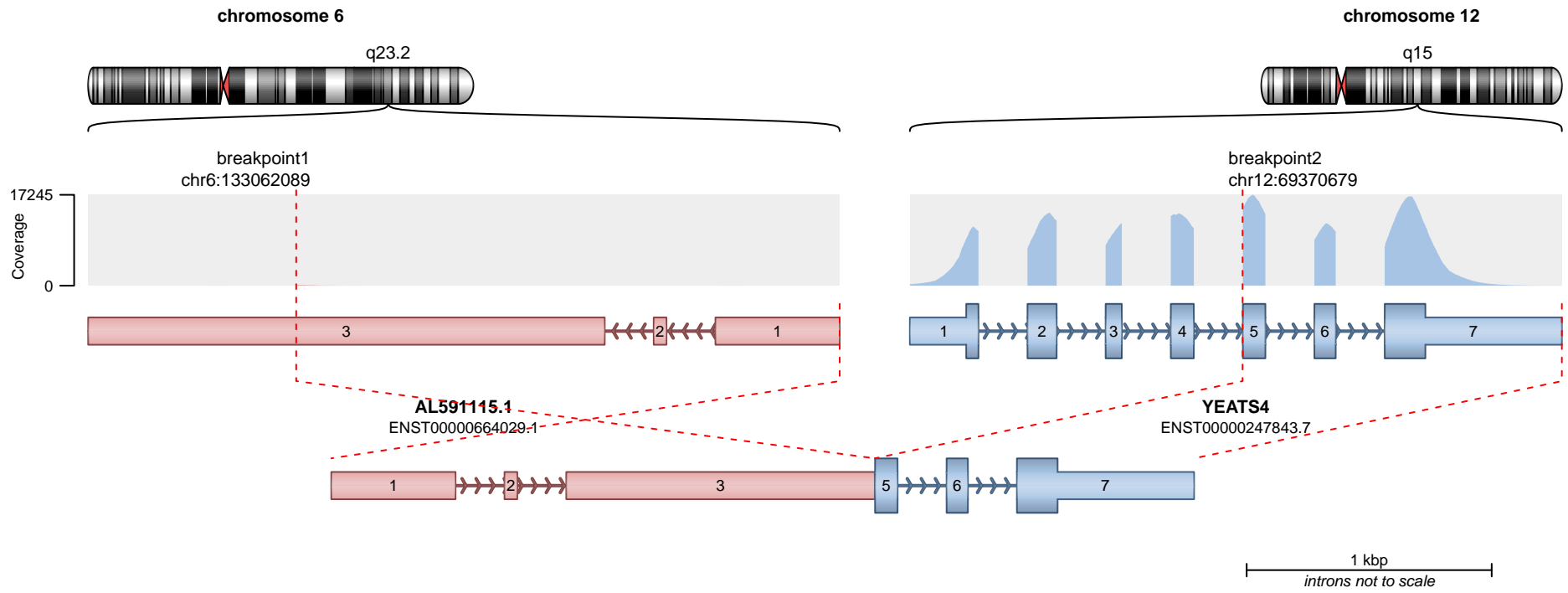
RETAINED PROTEIN DOMAINS
reading frame unclear



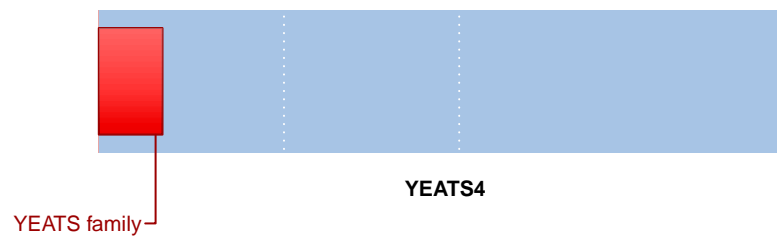
SUPPORTING READ COUNT

Split reads = 155
Discordant mates = 8

— translocation — deletion
— duplication — inversion



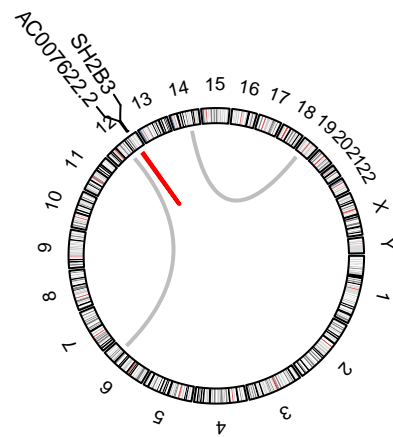
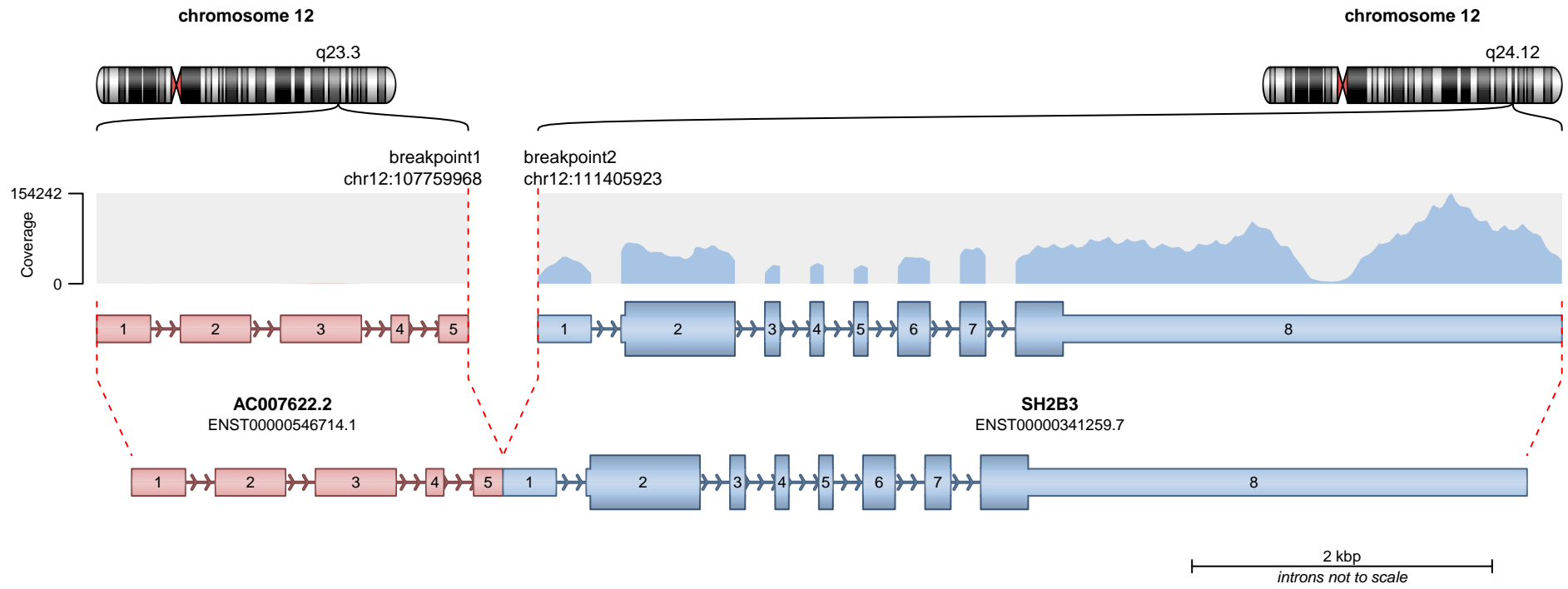
RETAINED PROTEIN DOMAINS
reading frame unclear



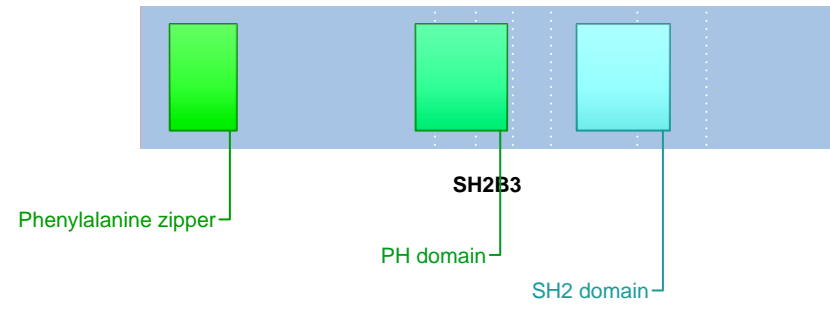
SUPPORTING READ COUNT

Split reads = 89
Discordant mates = 9

— translocation — deletion
— duplication — inversion



RETAINED PROTEIN DOMAINS
reading frame unclear



SUPPORTING READ COUNT

Split reads = 0
Discordant mates = 5

- translocation
- duplication
- deletion
- inversion