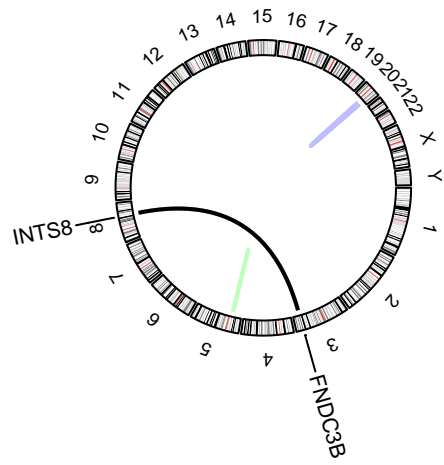
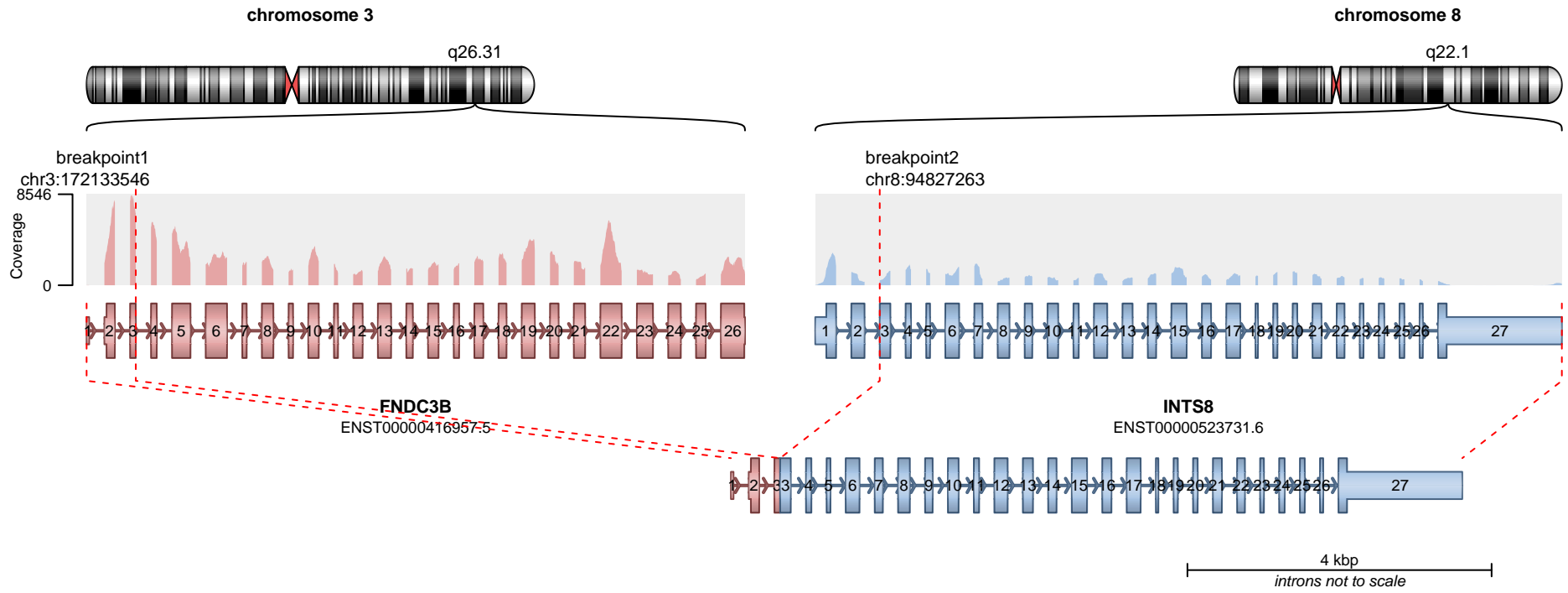


— translocation — deletion
— duplication — inversion

No protein domains retained in fusion.

SUPPORTING READ COUNT

Split reads = 32
 Discordant mates = 1

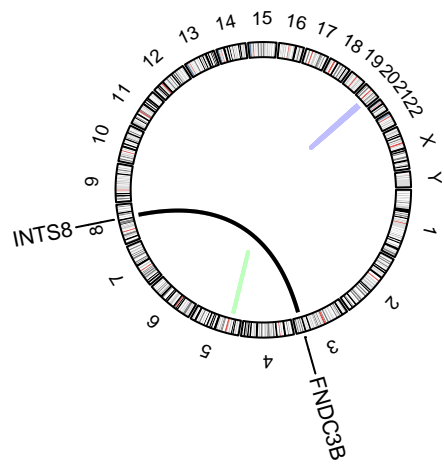
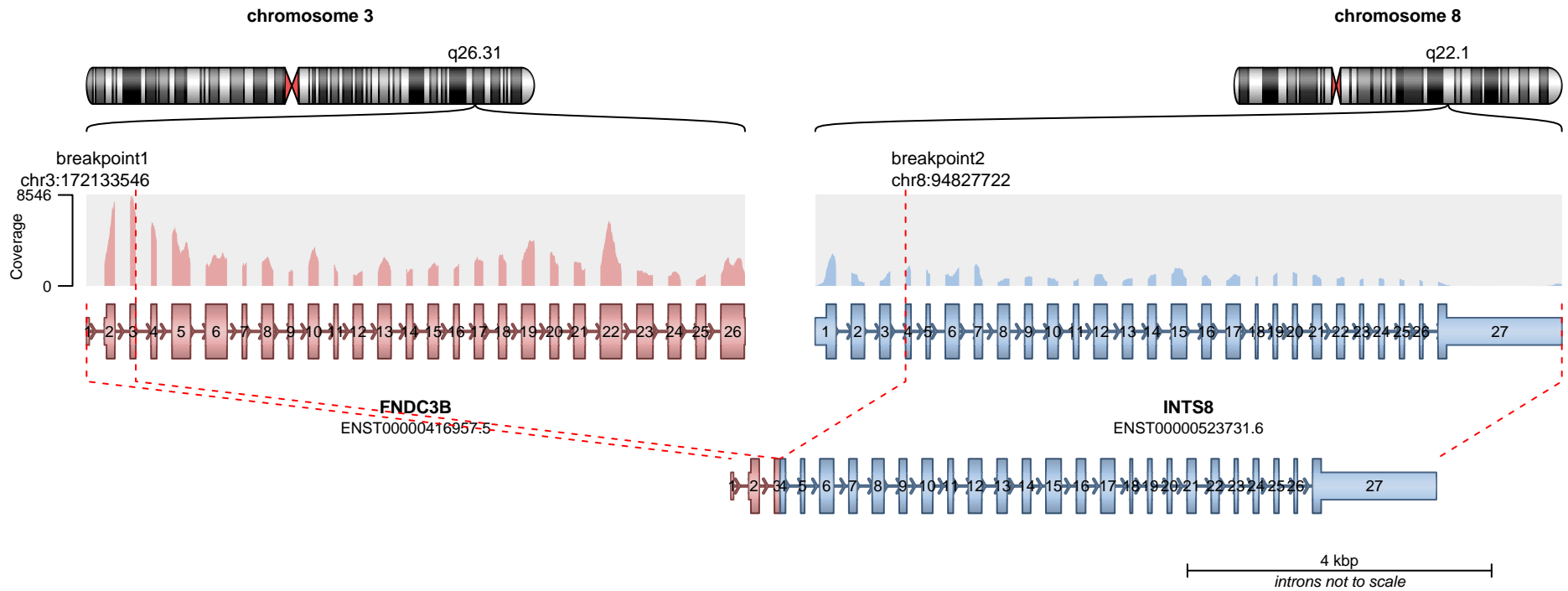


- translocation
- duplication
- deletion
- inversion

No protein domains retained in fusion.

SUPPORTING READ COUNT

Split reads = 14
Discordant mates = 0

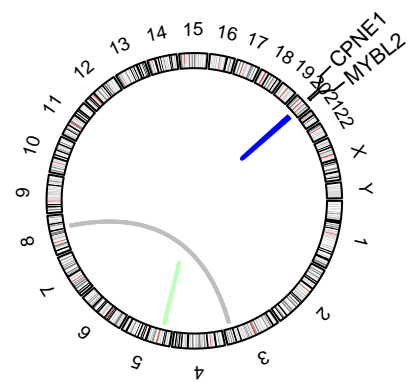
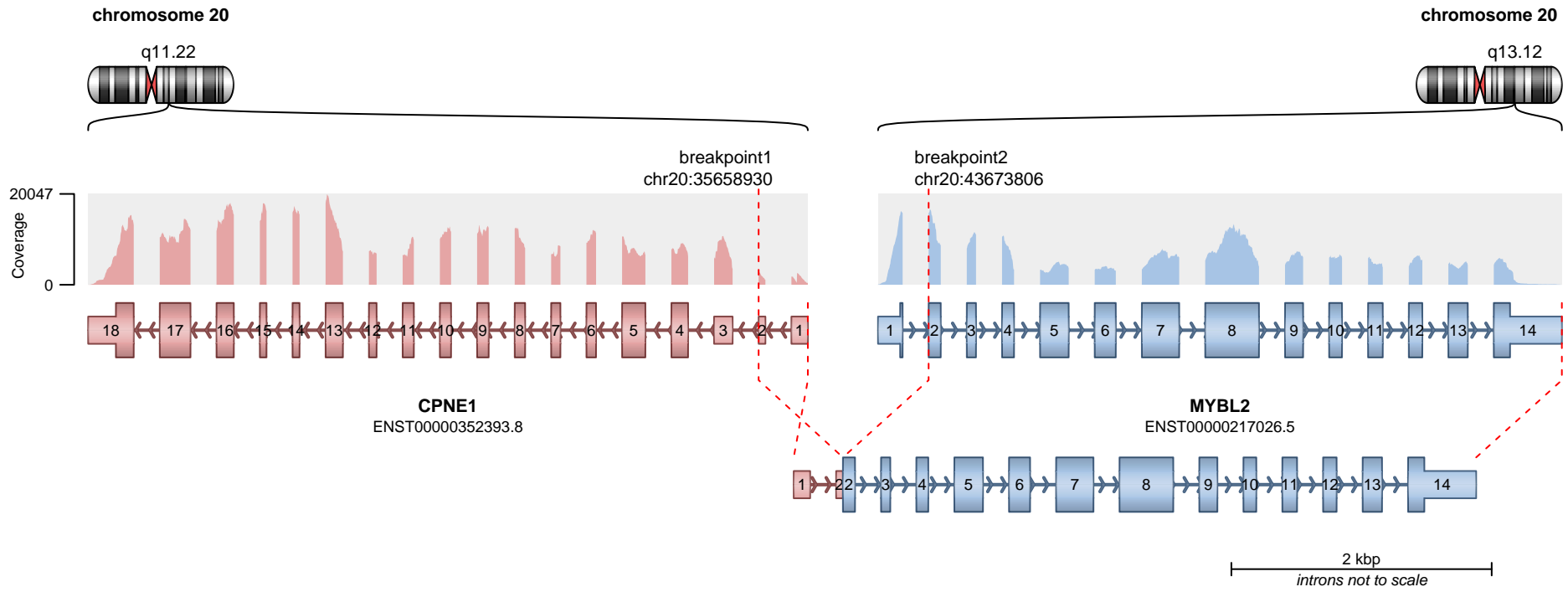


- translocation
- duplication
- deletion
- inversion

No protein domains retained in fusion.

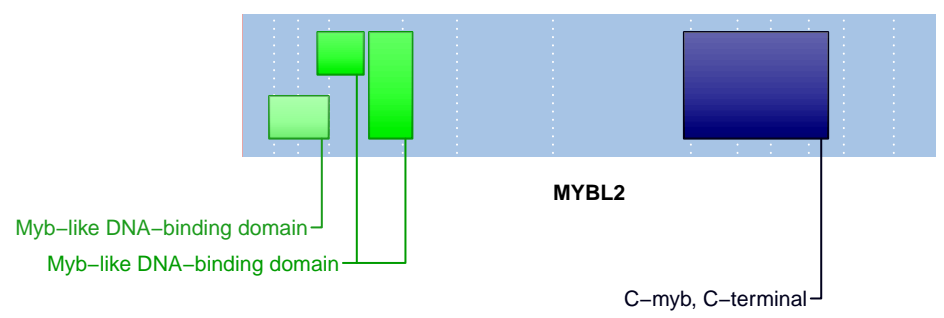
SUPPORTING READ COUNT

Split reads = 4
Discordant mates = 0



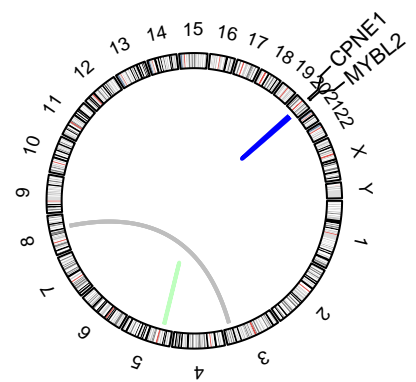
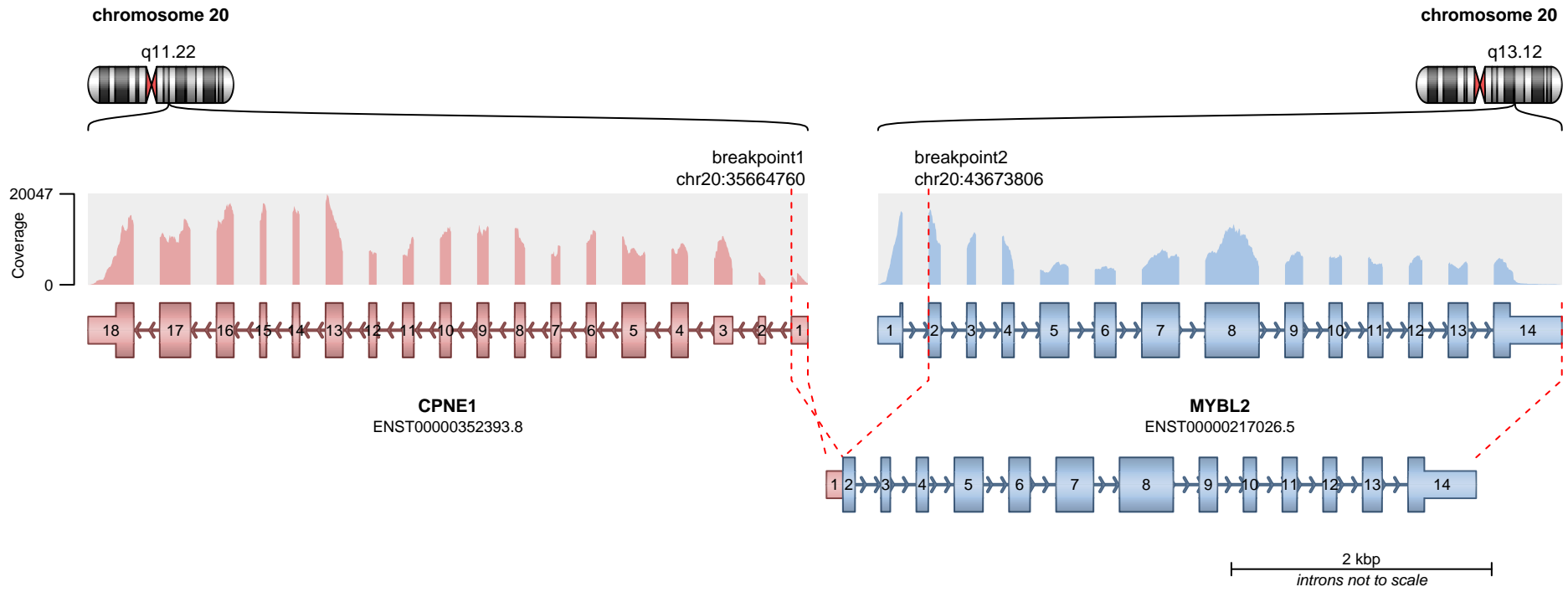
— translocation — deletion
— duplication — inversion

RETAINED PROTEIN DOMAINS
reading frame unclear



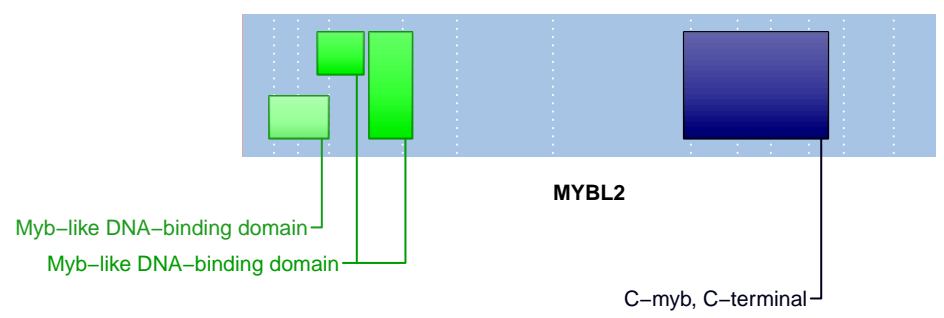
SUPPORTING READ COUNT

Split reads = 23
Discordant mates = 0



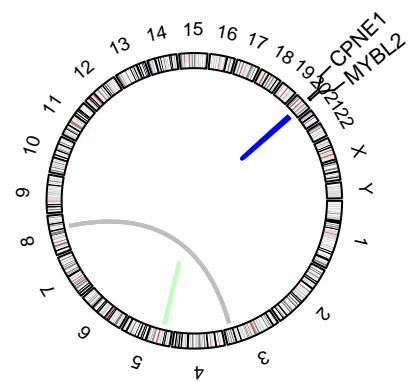
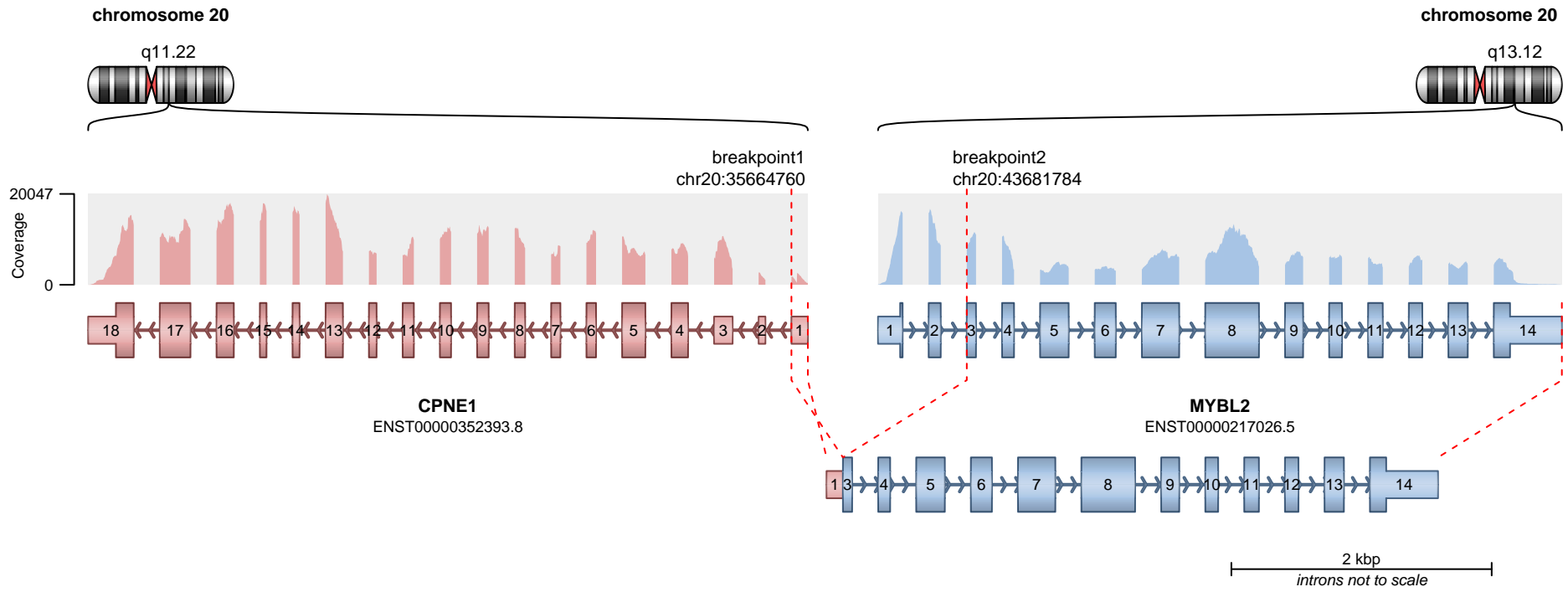
— translocation — deletion
— duplication — inversion

RETAINED PROTEIN DOMAINS
reading frame unclear



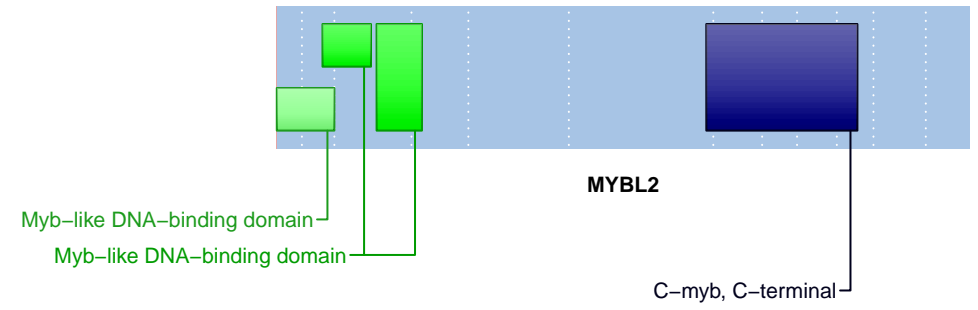
SUPPORTING READ COUNT

Split reads = 7
Discordant mates = 0



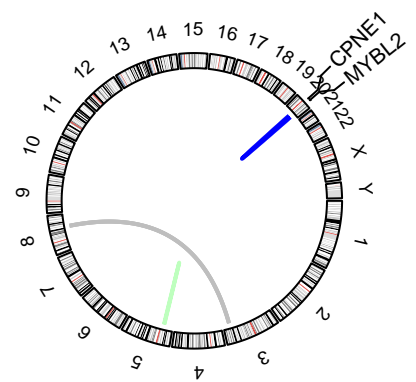
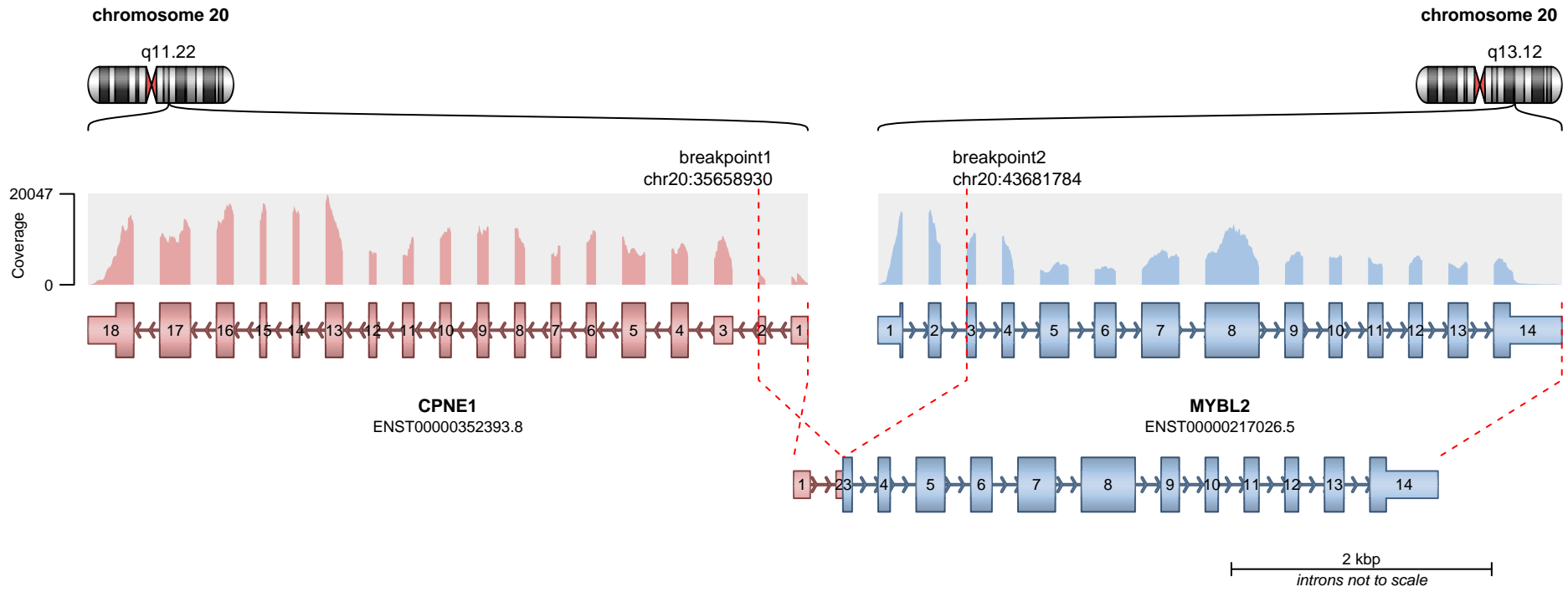
— translocation — deletion
— duplication — inversion

RETAINED PROTEIN DOMAINS
reading frame unclear

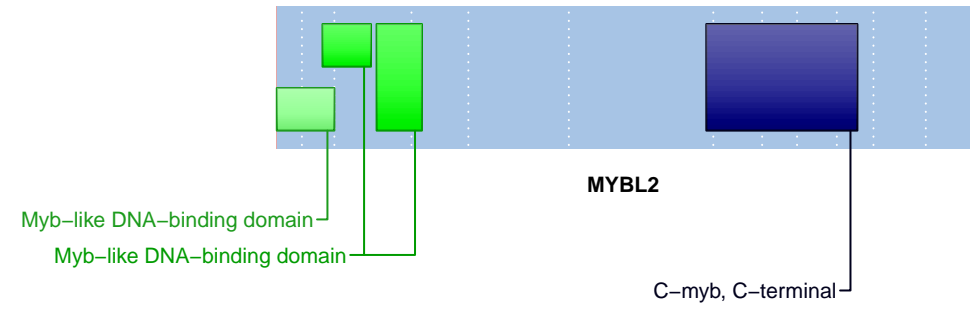


SUPPORTING READ COUNT

Split reads = 2
Discordant mates = 0



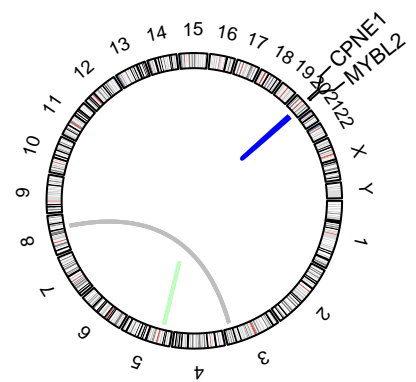
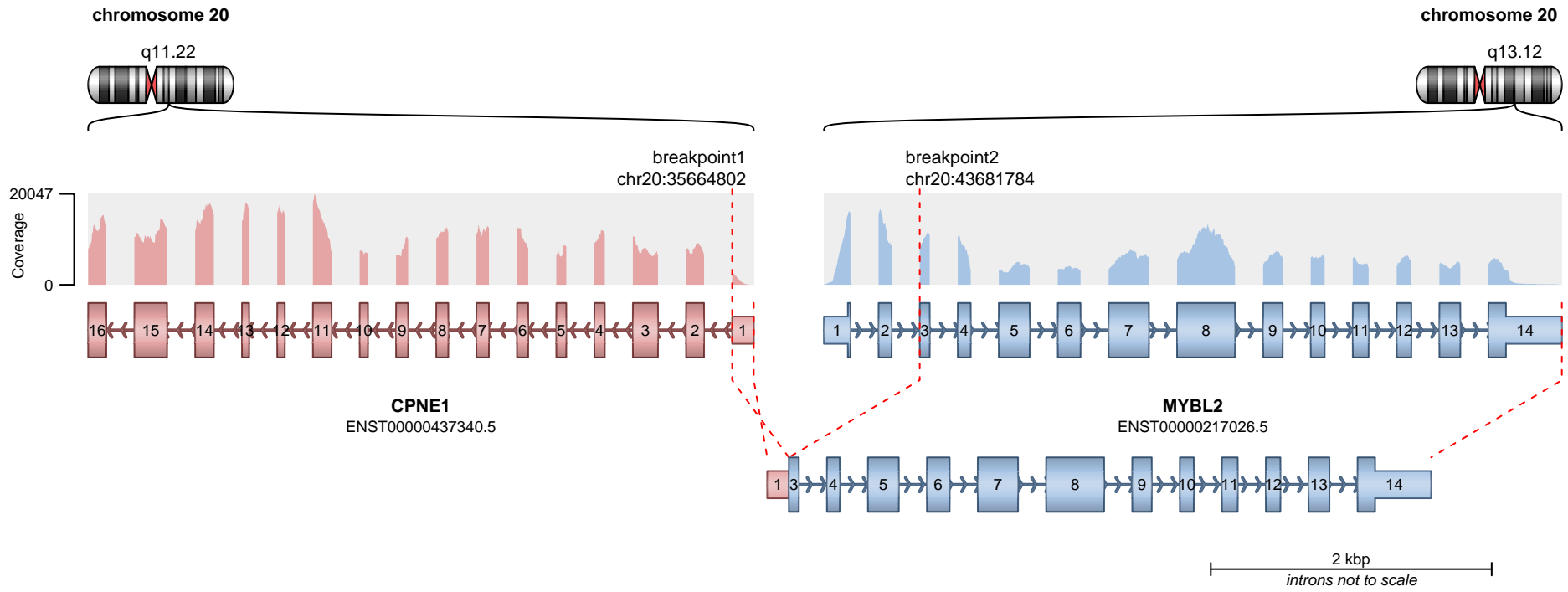
RETAINED PROTEIN DOMAINS
reading frame unclear



SUPPORTING READ COUNT

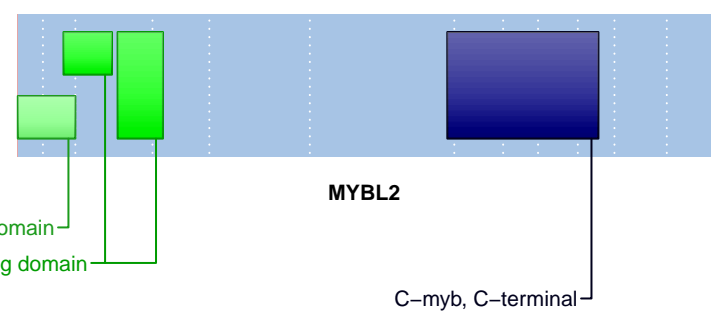
Split reads = 1
Discordant mates = 0

— translocation — deletion
— duplication — inversion



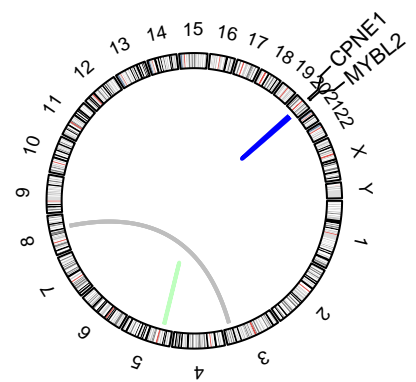
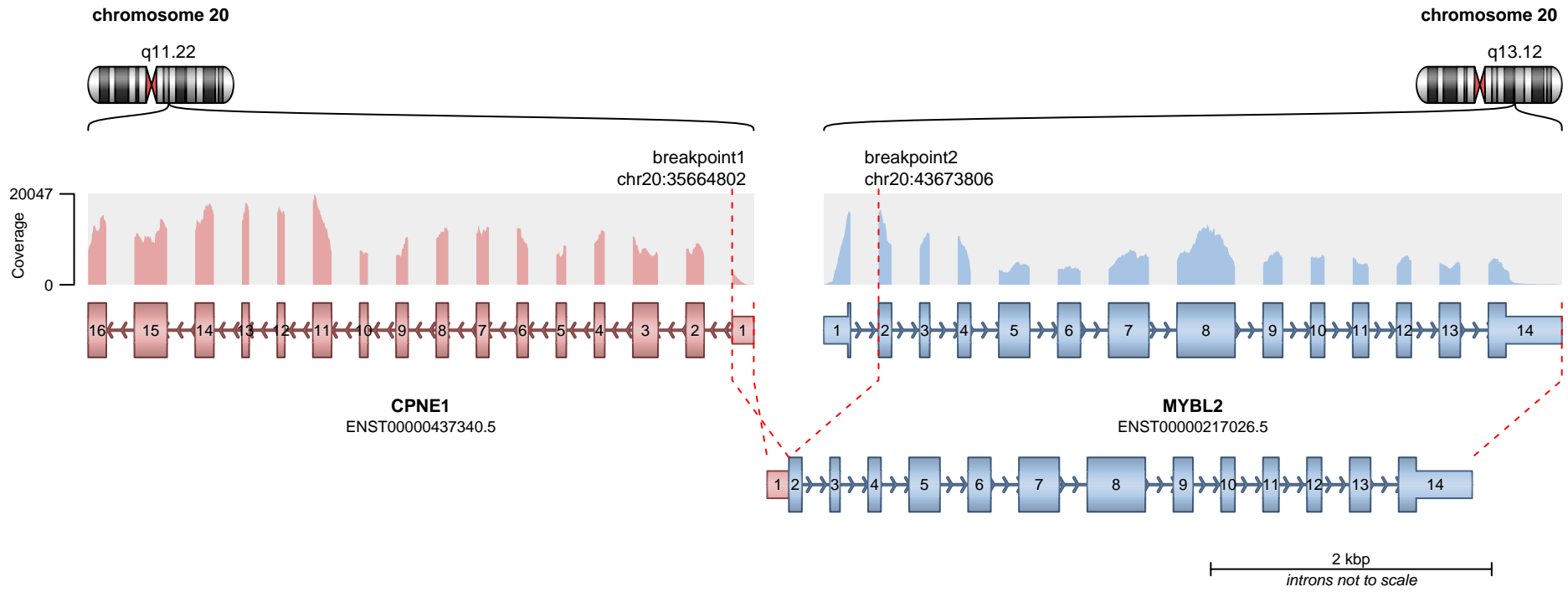
— translocation — deletion
— duplication — inversion

RETAINED PROTEIN DOMAINS
reading frame unclear



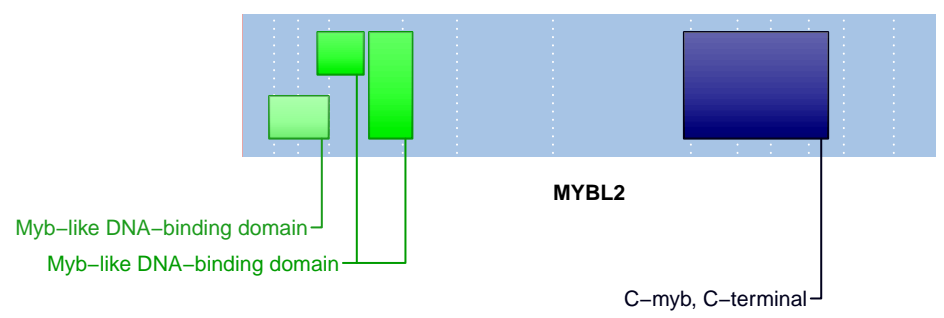
SUPPORTING READ COUNT

Split reads = 1
Discordant mates = 0



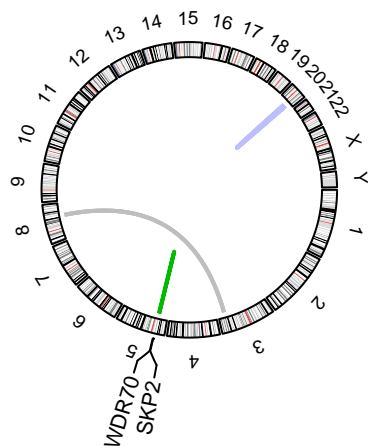
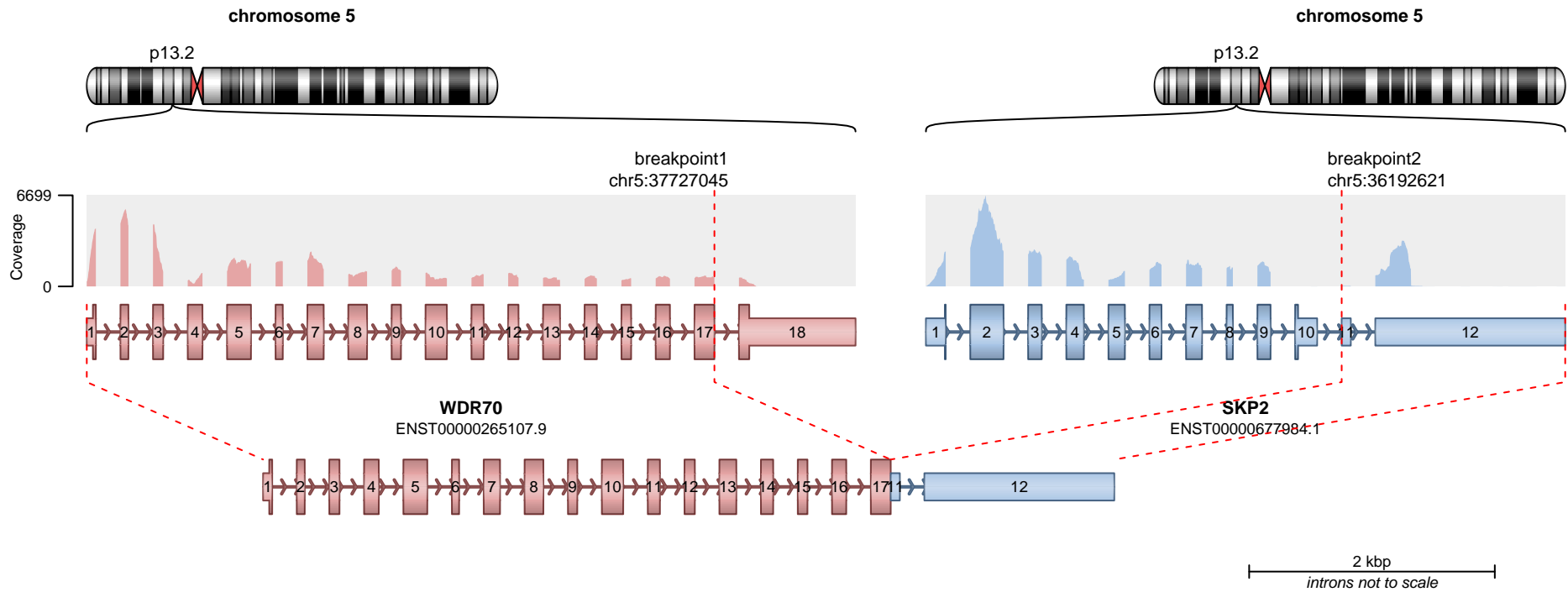
— translocation — deletion
— duplication — inversion

RETAINED PROTEIN DOMAINS
reading frame unclear

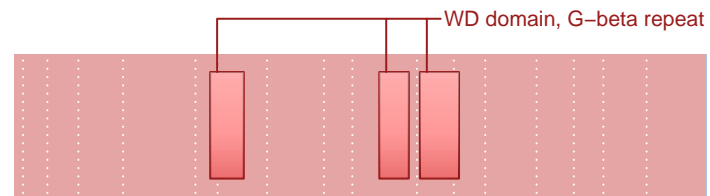


SUPPORTING READ COUNT

Split reads = 1
Discordant mates = 0



RETAINED PROTEIN DOMAINS
reading frame unclear



SUPPORTING READ COUNT

Split reads = 9
Discordant mates = 0

- translocation
- duplication
- deletion
- inversion