

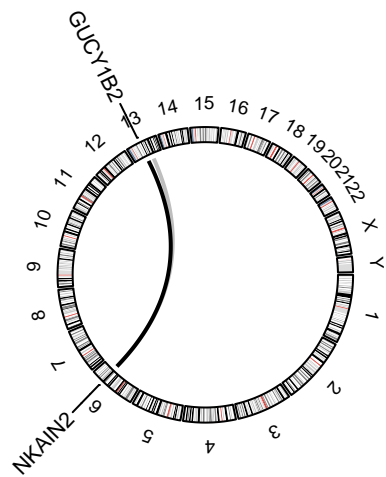
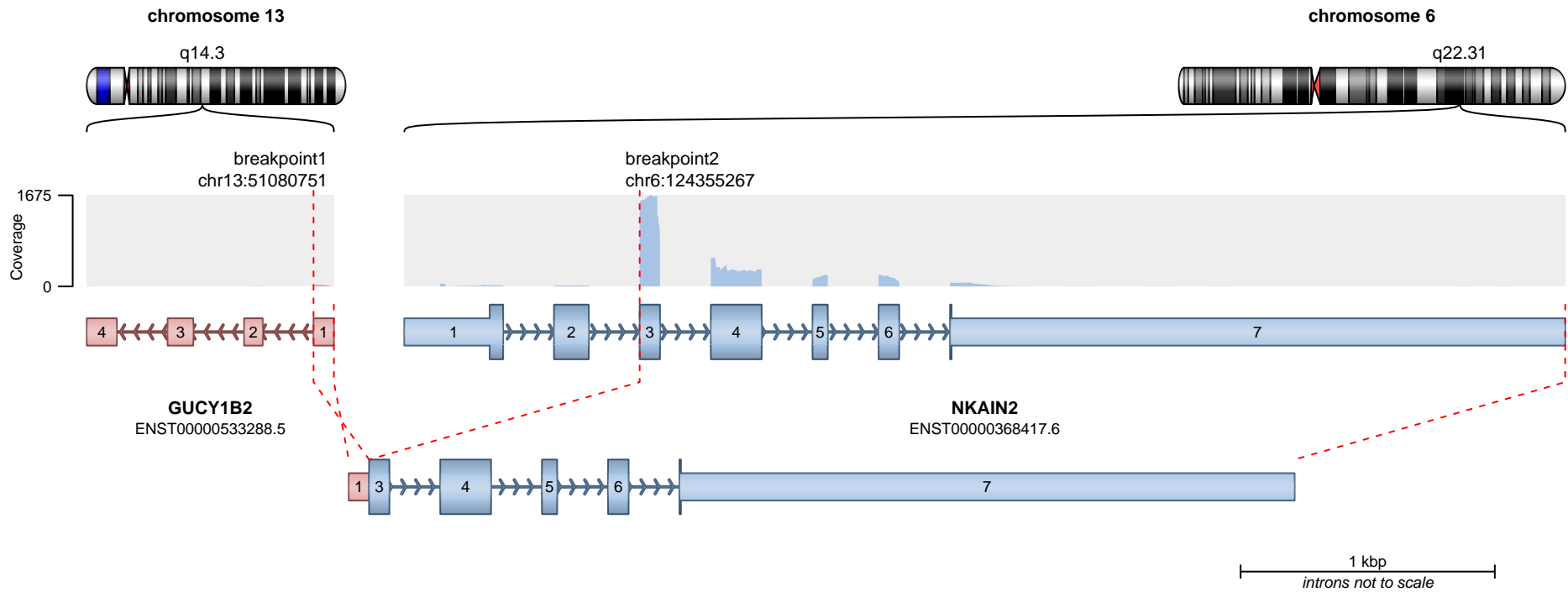
RETAINED PROTEIN DOMAINS
reading frame unclear



SUPPORTING READ COUNT

Split reads = 86
Discordant mates = 0

— translocation — deletion
— duplication — inversion



RETAINED PROTEIN DOMAINS
reading frame unclear



SUPPORTING READ COUNT

Split reads = 23
Discordant mates = 0

— translocation — deletion
— duplication — inversion