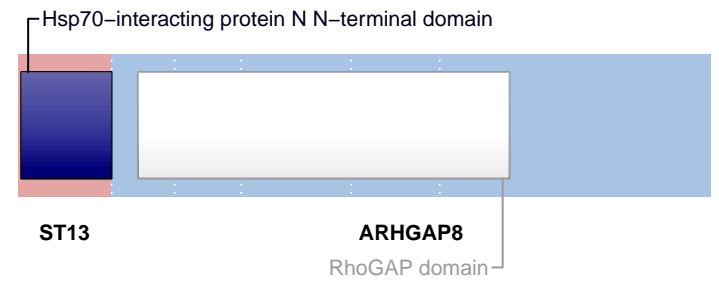


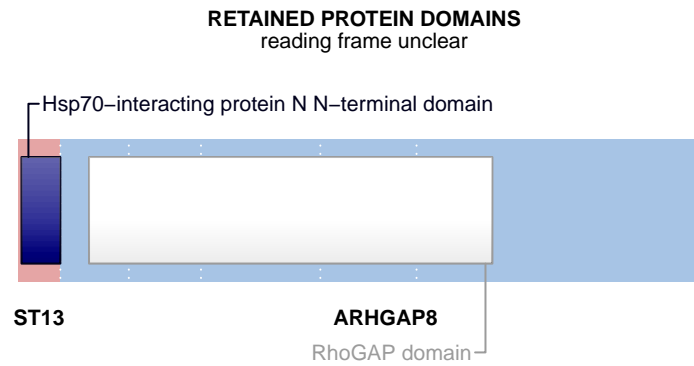
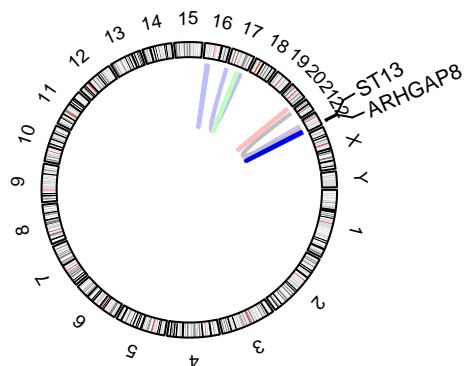
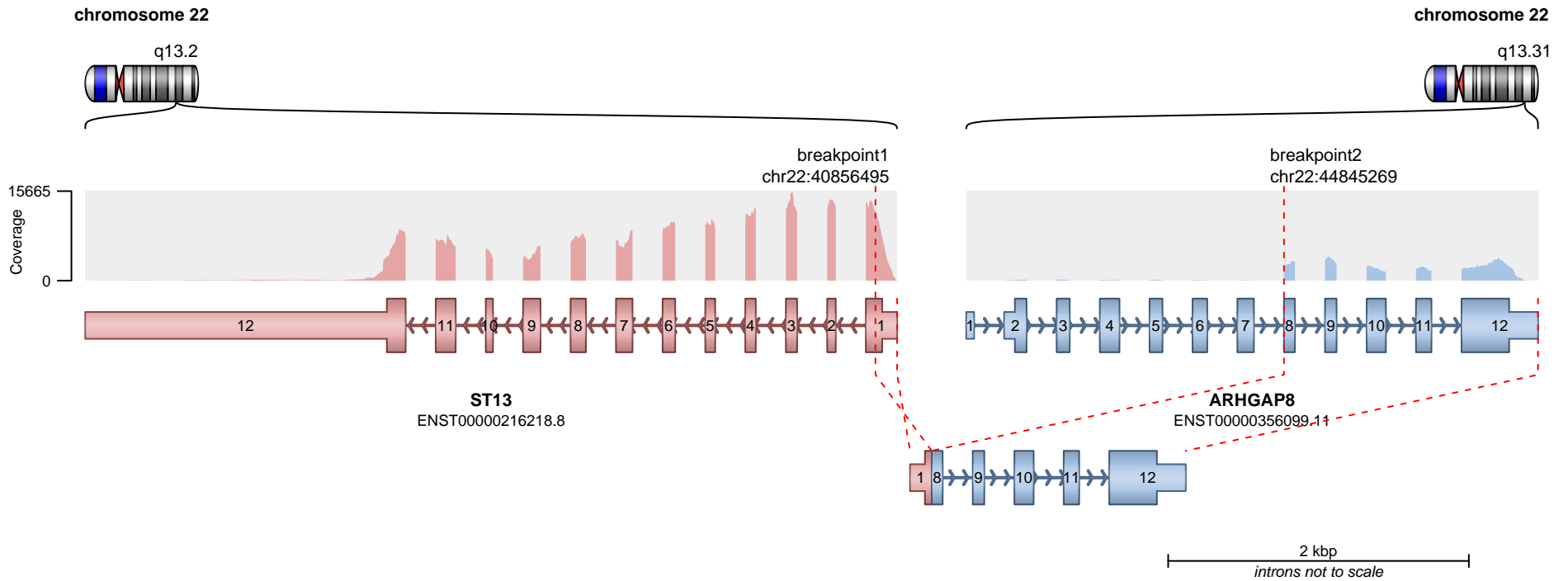
**RETAINED PROTEIN DOMAINS**  
reading frame unclear



**SUPPORTING READ COUNT**

Split reads = 865  
Discordant mates = 15

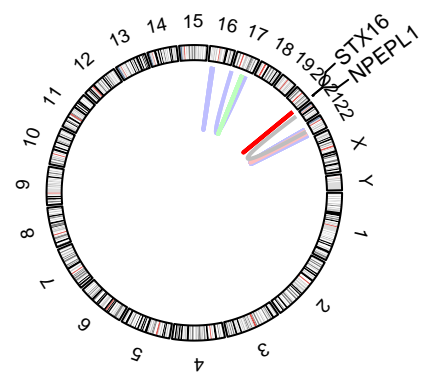
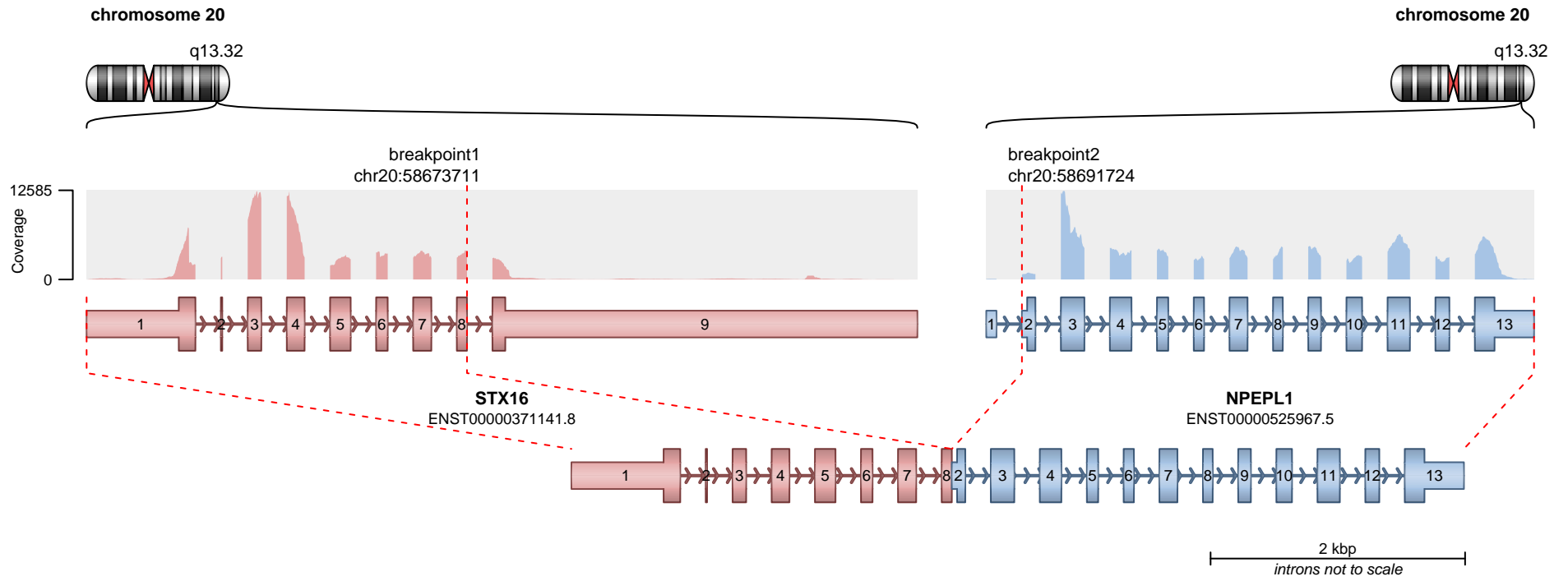
- translocation
- duplication
- deletion
- inversion



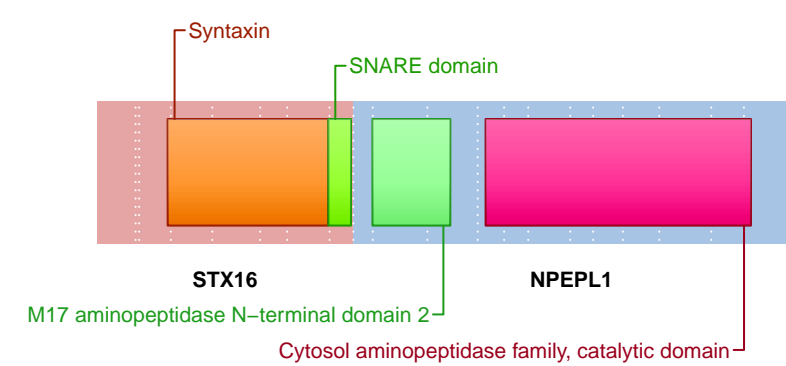
**SUPPORTING READ COUNT**

Split reads = 5  
Discordant mates = 0

- translocation
- duplication
- deletion
- inversion



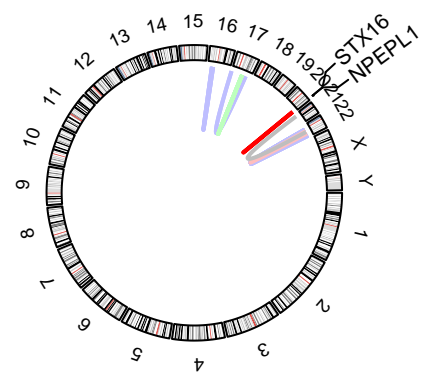
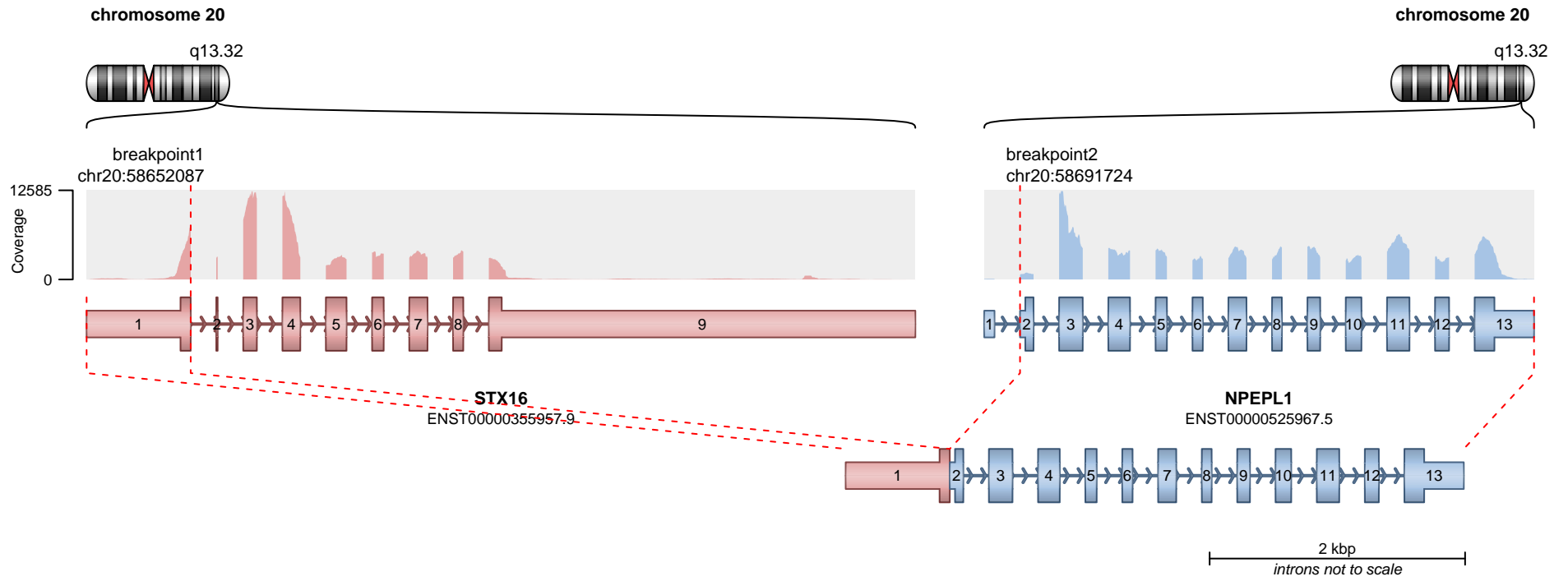
**RETAINED PROTEIN DOMAINS**  
reading frame unclear



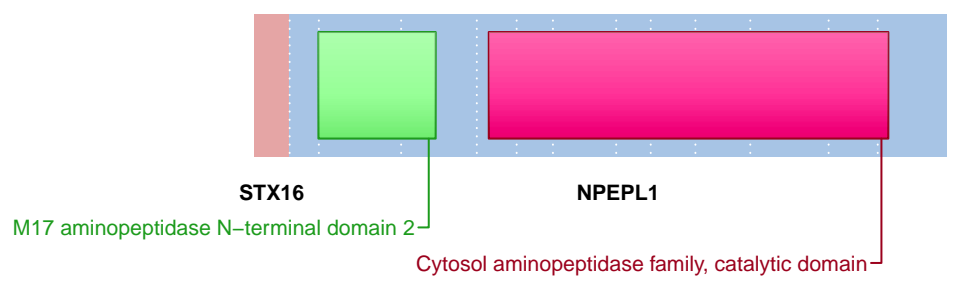
**SUPPORTING READ COUNT**

Split reads = 181  
Discordant mates = 4

- translocation
- duplication
- deletion
- inversion



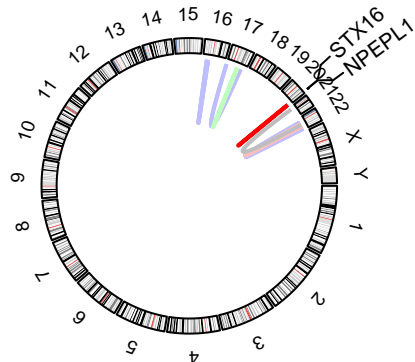
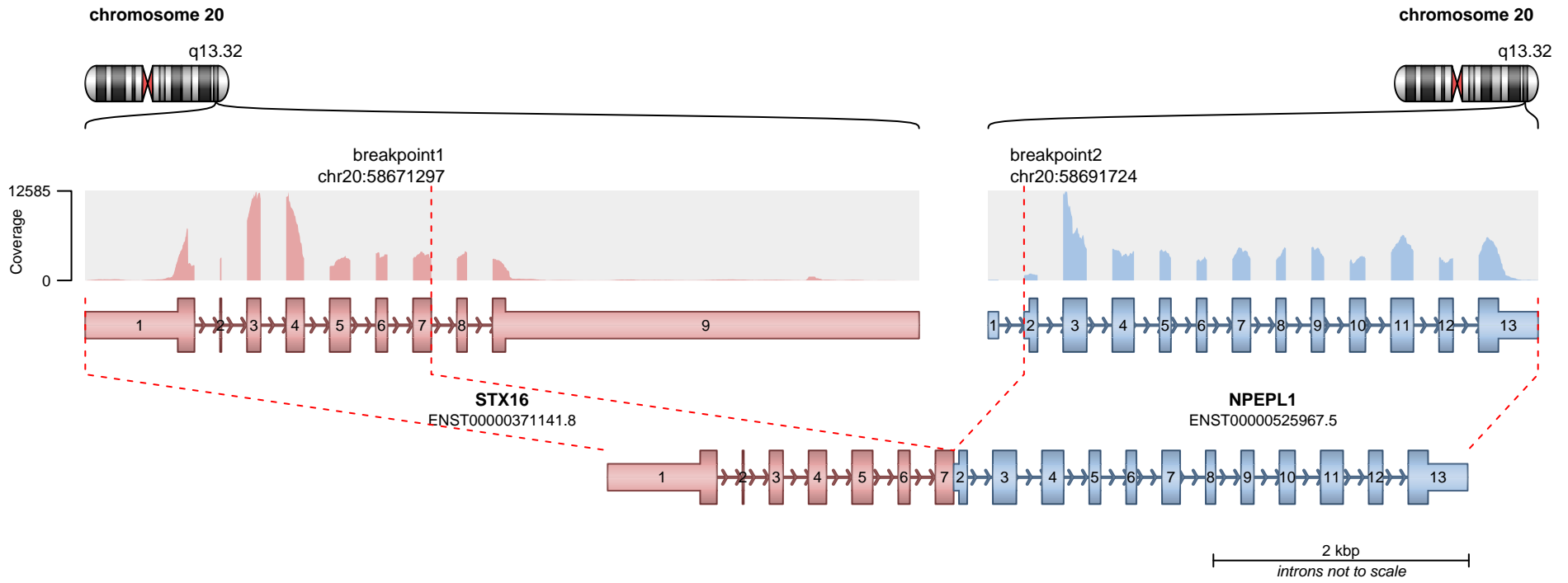
**RETAINED PROTEIN DOMAINS**  
reading frame unclear



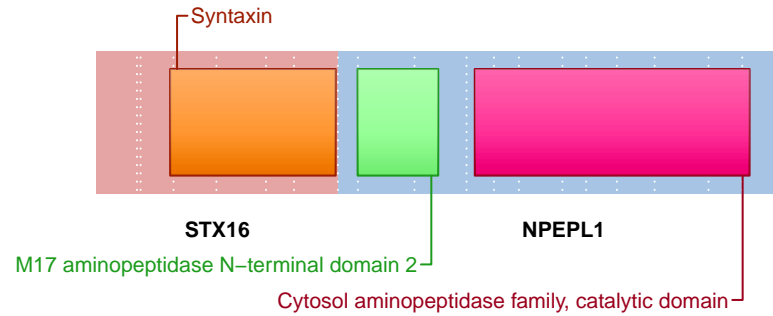
**SUPPORTING READ COUNT**

Split reads = 3  
Discordant mates = 0

- translocation
- duplication
- deletion
- inversion



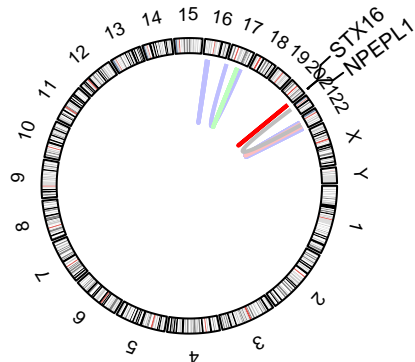
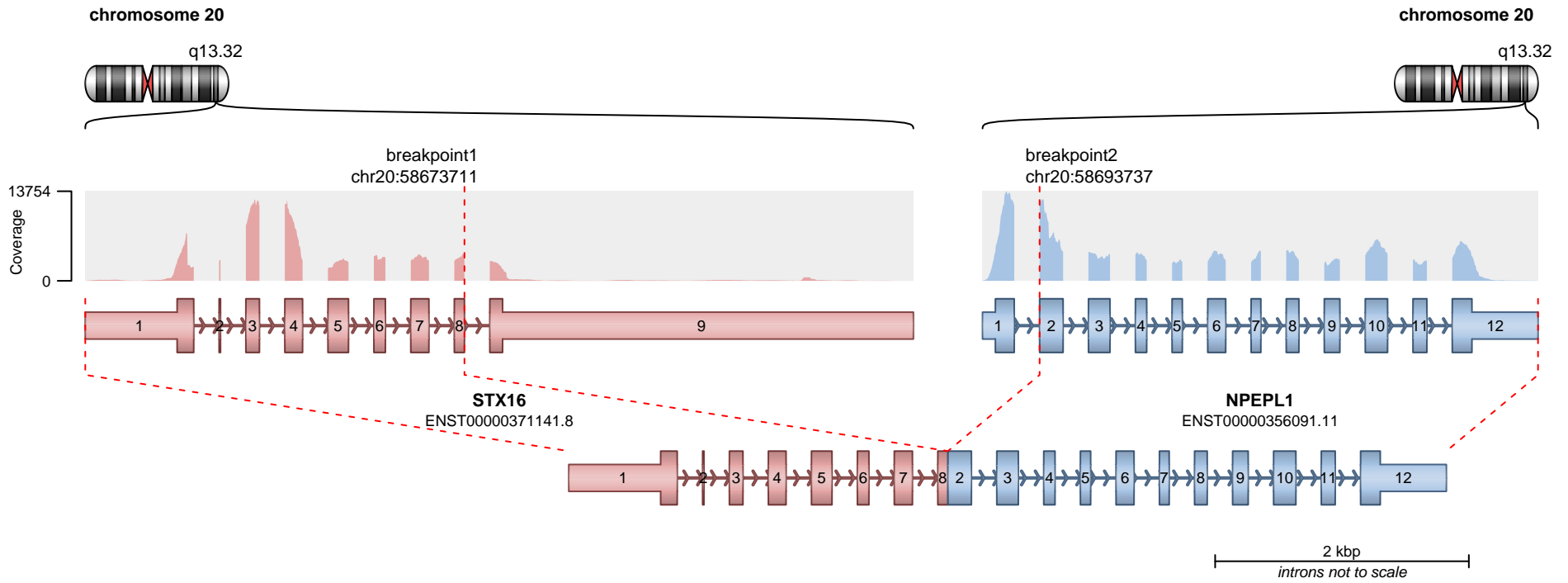
**RETAINED PROTEIN DOMAINS**  
reading frame unclear



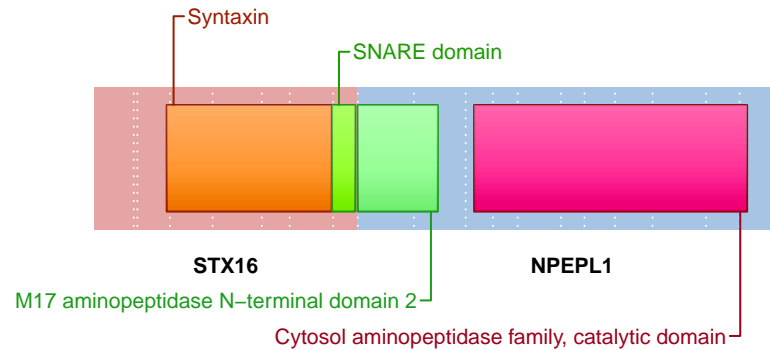
**SUPPORTING READ COUNT**

Split reads = 2  
Discordant mates = 2

- translocation
- duplication
- deletion
- inversion



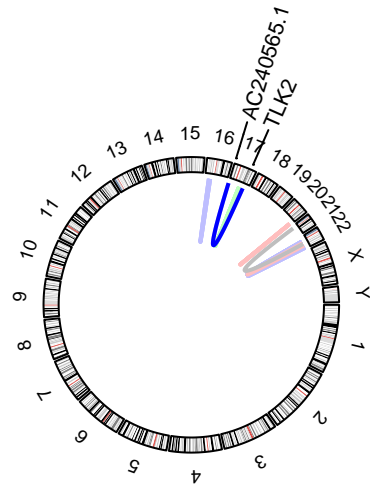
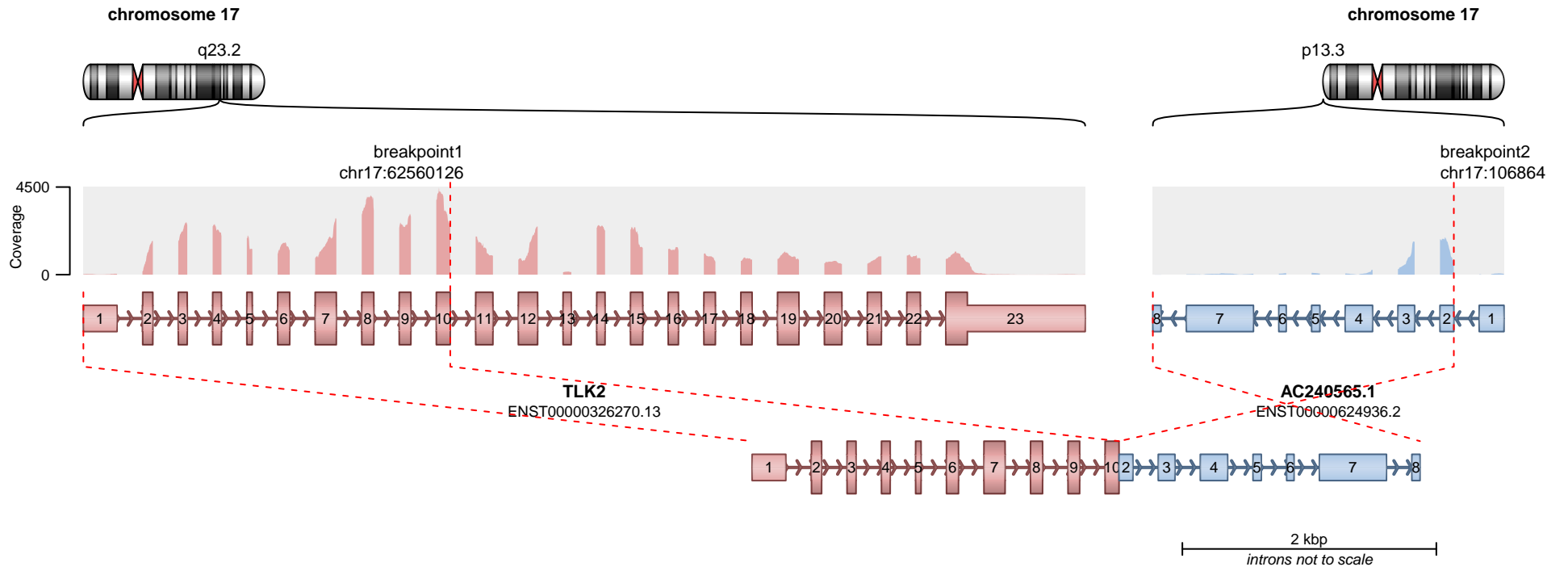
**RETAINED PROTEIN DOMAINS**  
reading frame unclear



**SUPPORTING READ COUNT**

Split reads = 1  
Discordant mates = 0

- translocation
- duplication
- deletion
- inversion



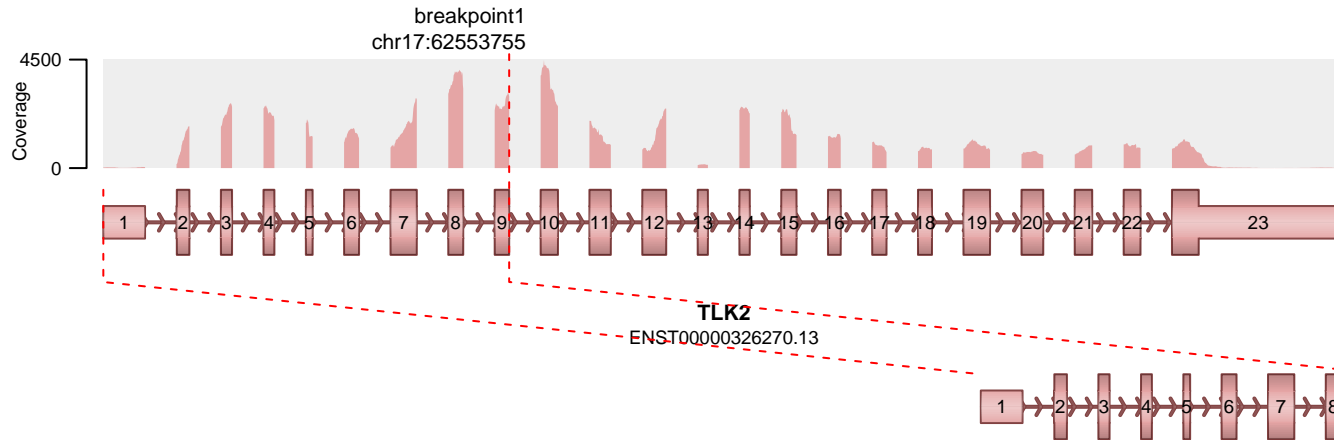
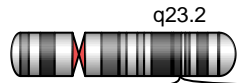
No protein domains retained in fusion.

**SUPPORTING READ COUNT**

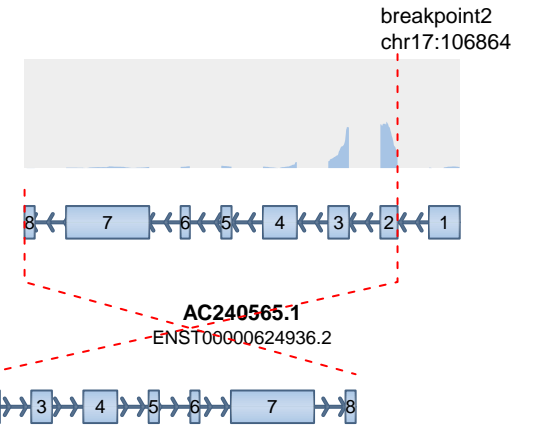
Split reads = 101  
Discordant mates = 1

— translocation    — deletion  
— duplication    — inversion

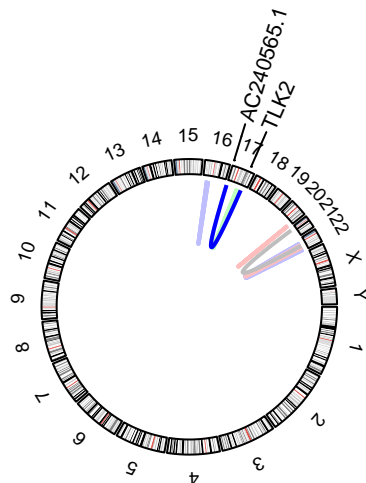
chromosome 17



chromosome 17



2 kbp  
*introns not to scale*

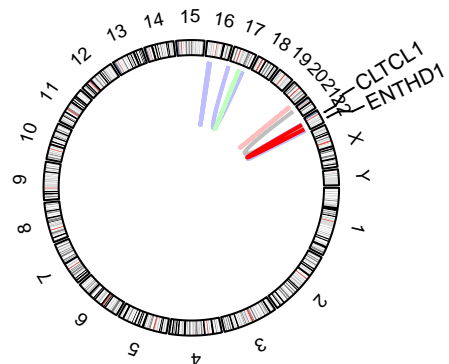
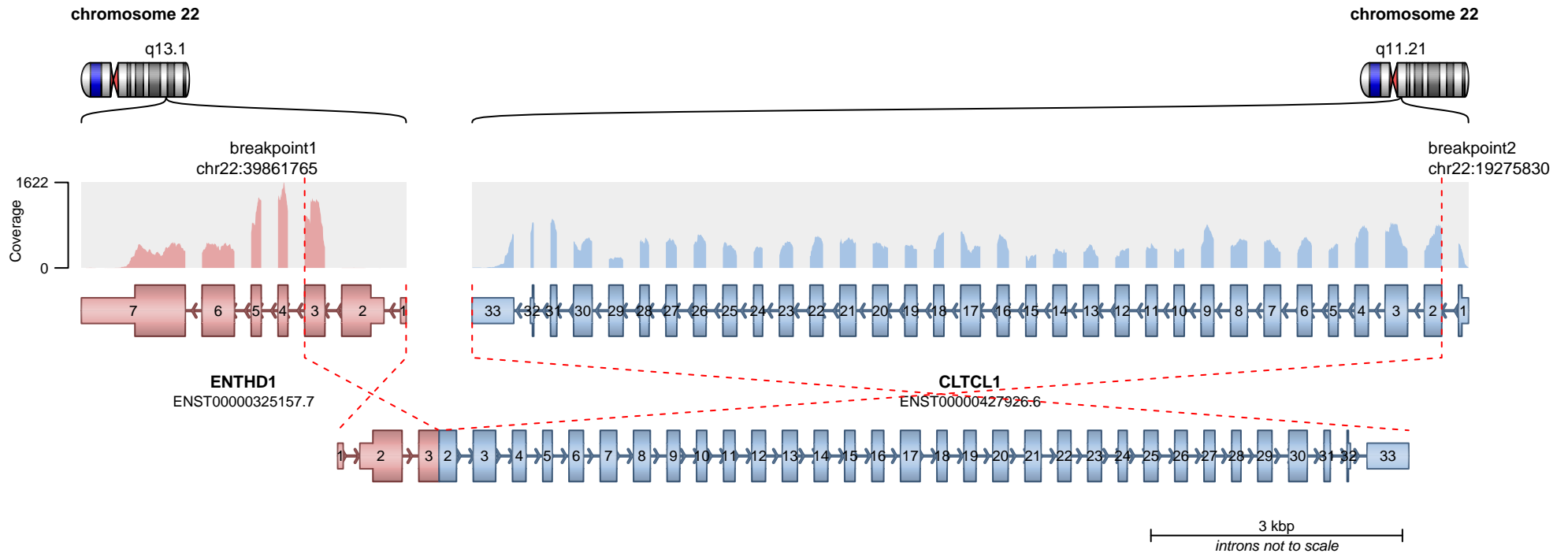


No protein domains retained in fusion.

**SUPPORTING READ COUNT**

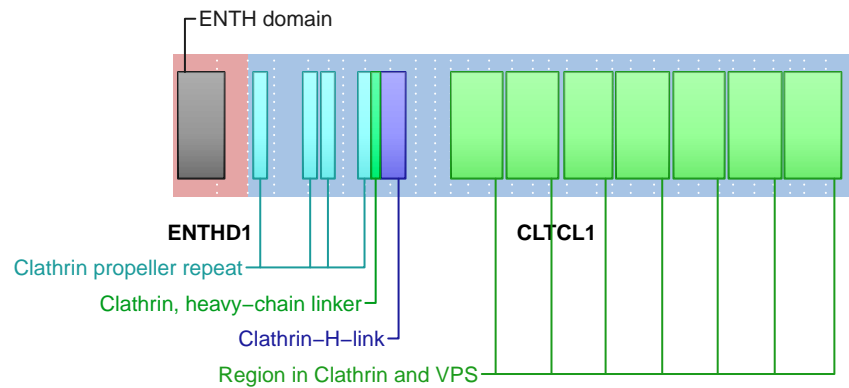
Split reads = 1  
Discordant mates = 0

— translocation    — deletion  
— duplication    — inversion



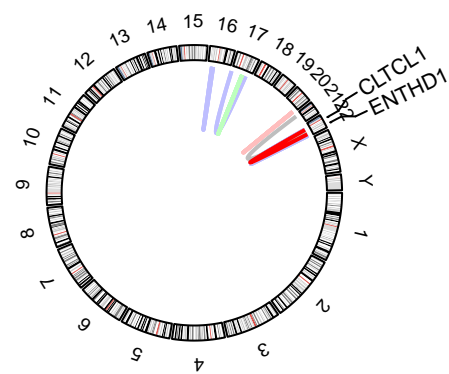
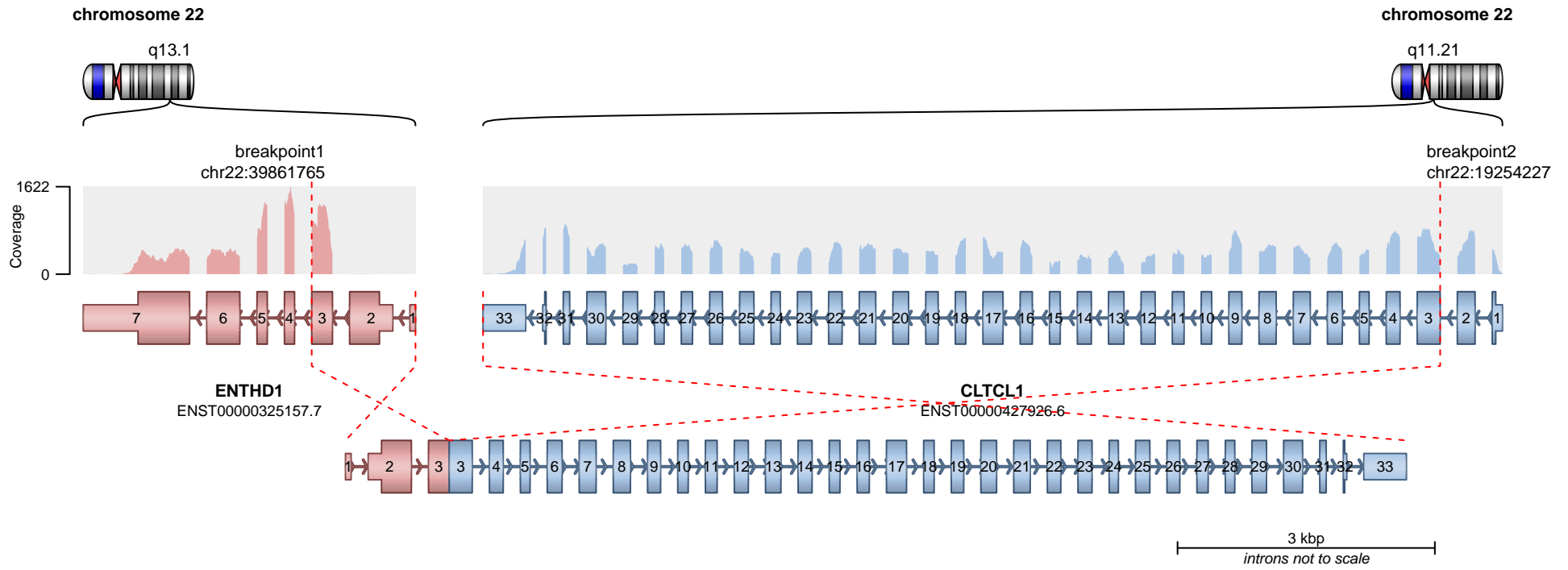
— translocation — deletion  
— duplication — inversion

**RETAINED PROTEIN DOMAINS**  
reading frame unclear



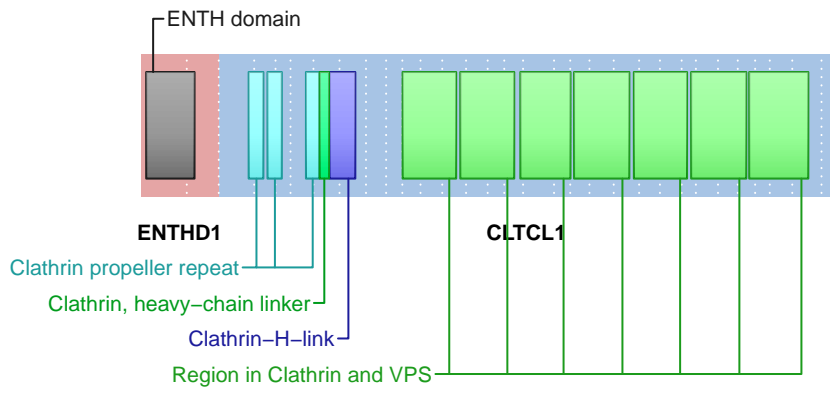
**SUPPORTING READ COUNT**

Split reads = 68  
Discordant mates = 0



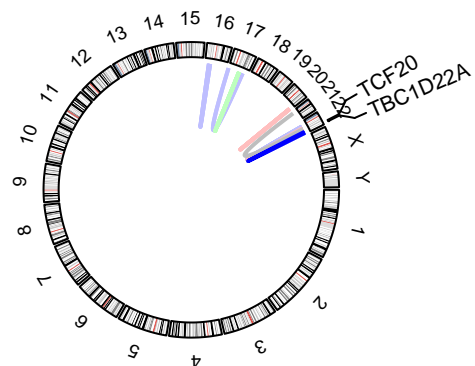
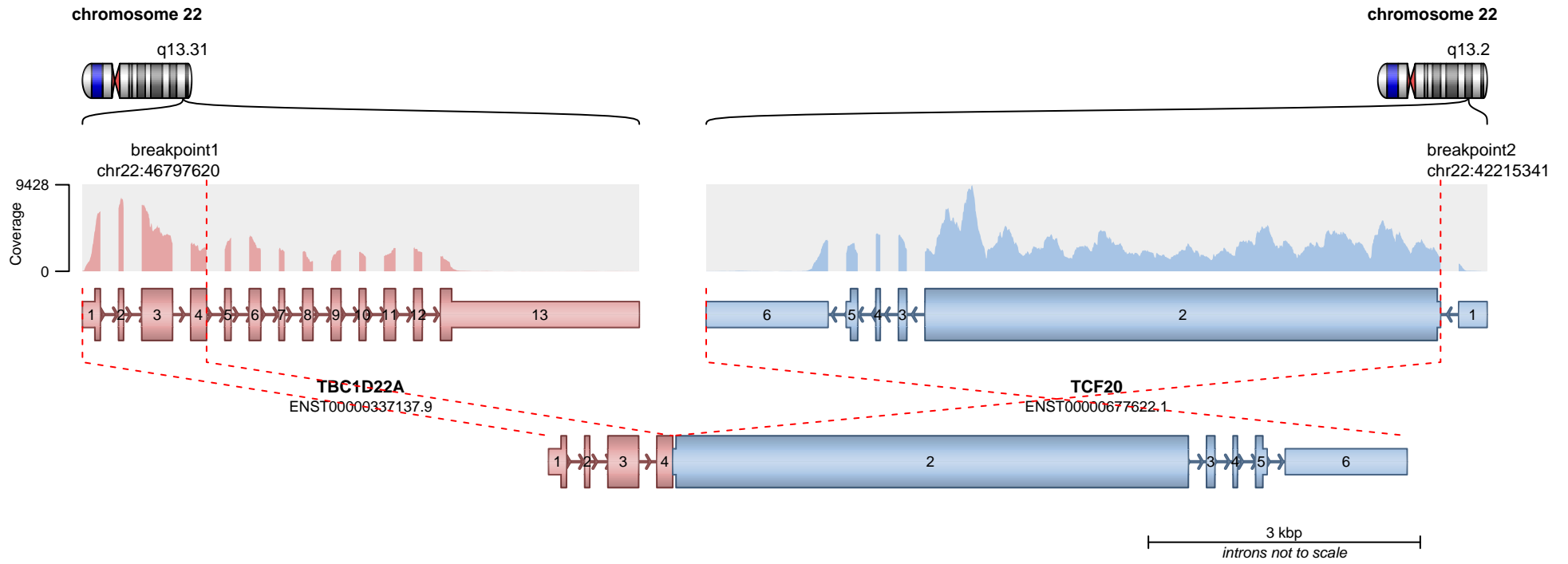
— translocation    — deletion  
 — duplication    — inversion

**RETAINED PROTEIN DOMAINS**  
reading frame unclear

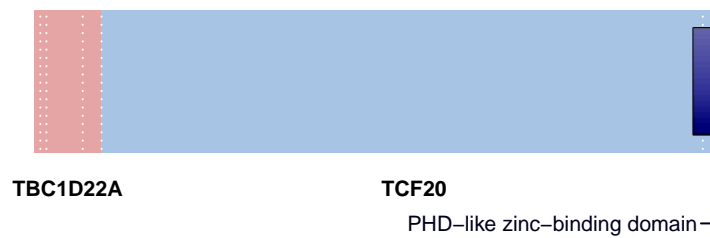


**SUPPORTING READ COUNT**

Split reads = 1  
 Discordant mates = 0



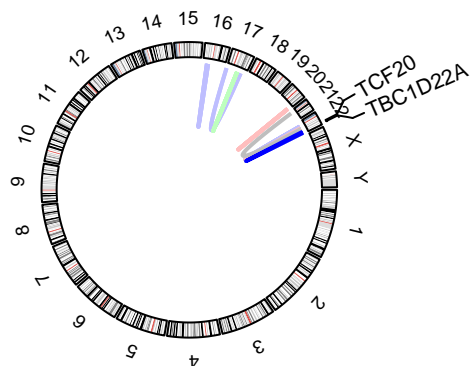
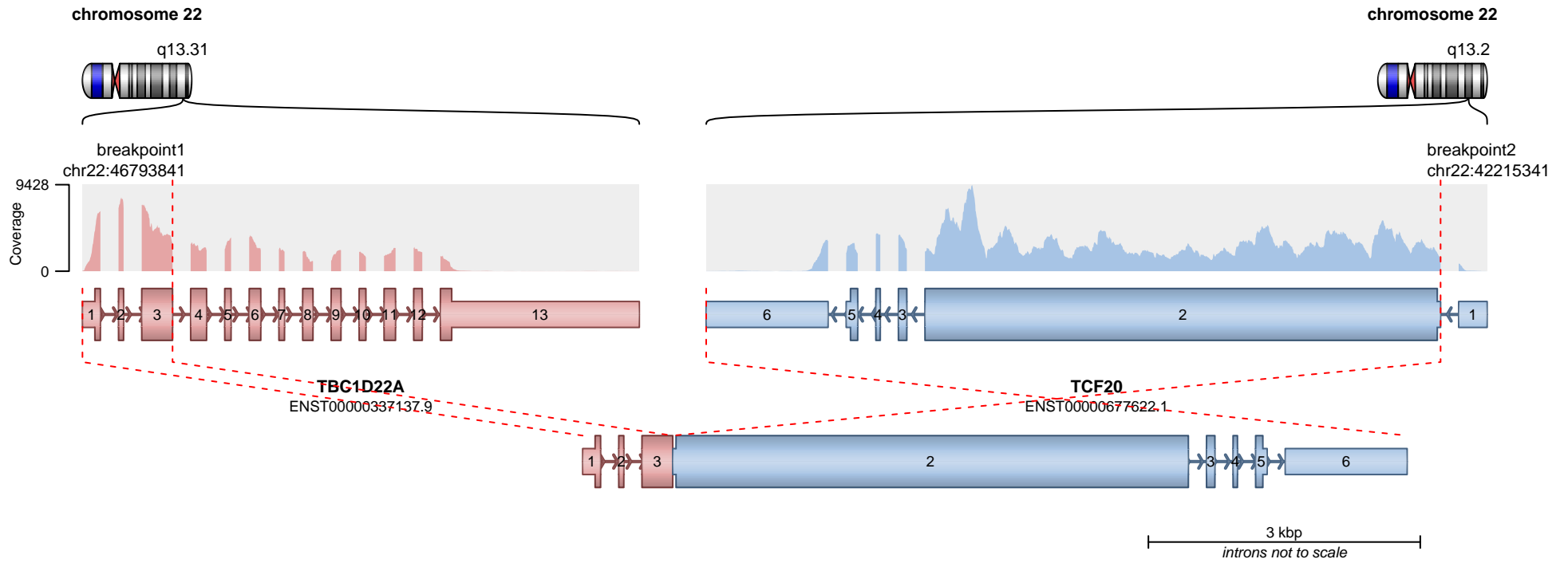
**RETAINED PROTEIN DOMAINS**  
reading frame unclear



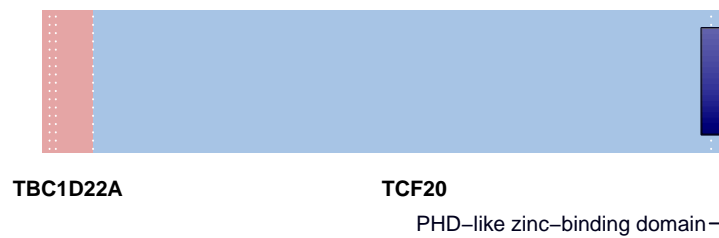
**SUPPORTING READ COUNT**

Split reads = 50  
Discordant mates = 0

— translocation — deletion  
— duplication — inversion



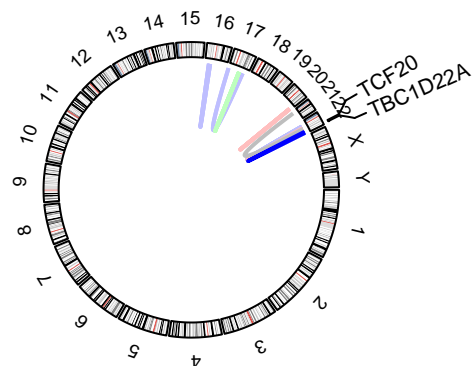
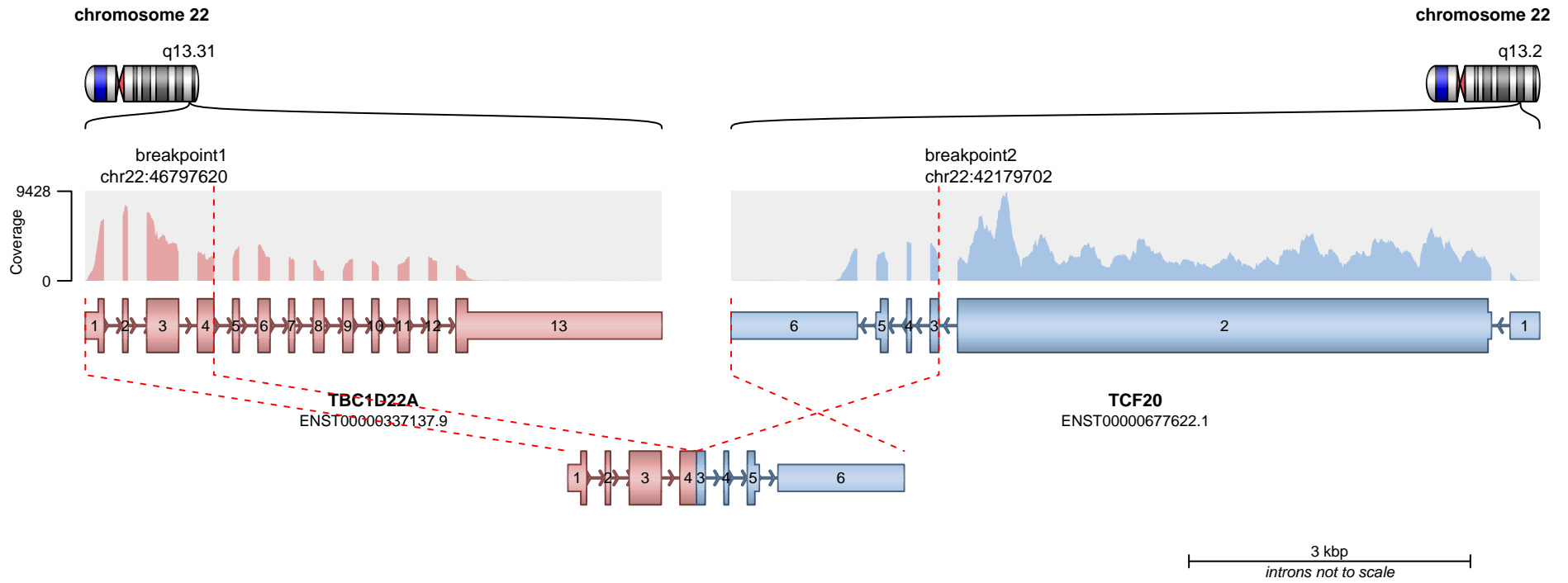
**RETAINED PROTEIN DOMAINS**  
reading frame unclear



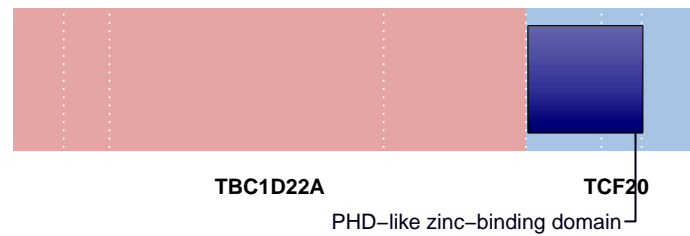
**SUPPORTING READ COUNT**

Split reads = 3  
Discordant mates = 0

— translocation — deletion  
— duplication — inversion



**RETAINED PROTEIN DOMAINS**  
reading frame unclear



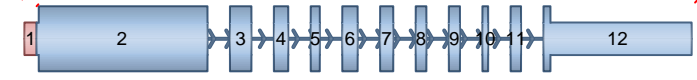
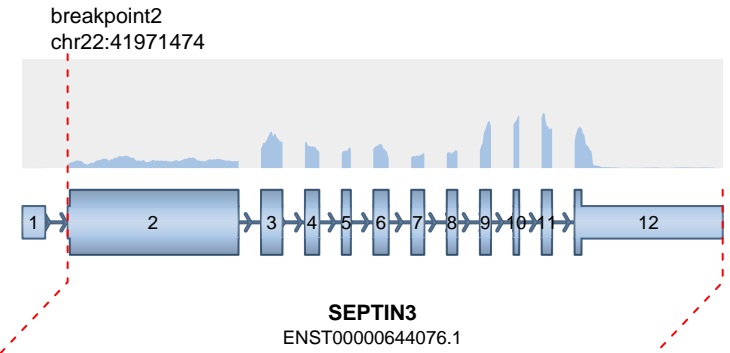
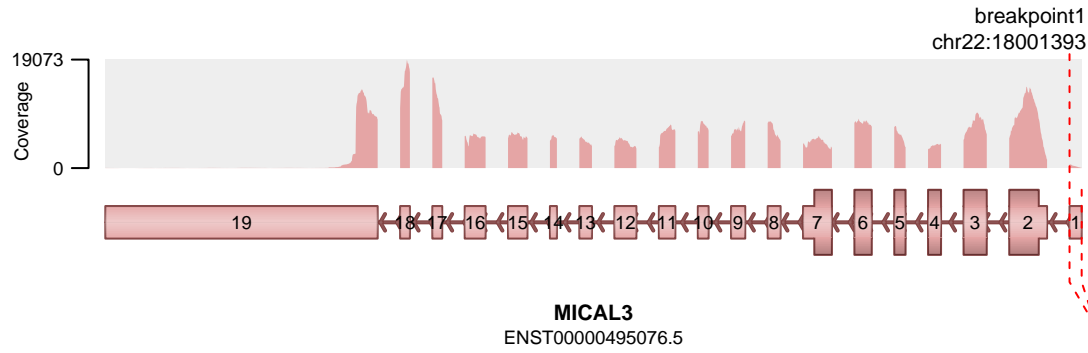
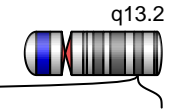
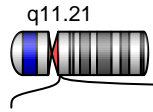
**SUPPORTING READ COUNT**

Split reads = 1  
Discordant mates = 0

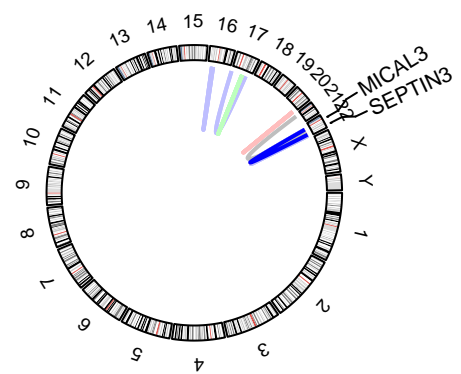
— translocation    — deletion  
— duplication    — inversion

chromosome 22

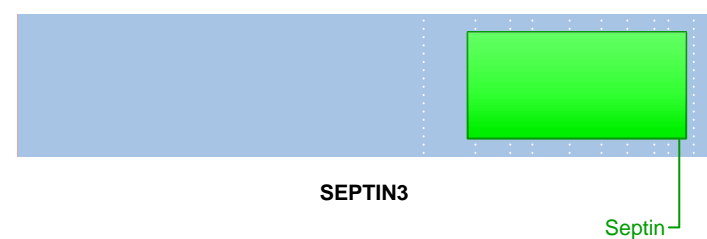
chromosome 22



3 kbp  
introns not to scale



**RETAINED PROTEIN DOMAINS**  
reading frame unclear

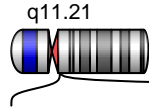


**SUPPORTING READ COUNT**

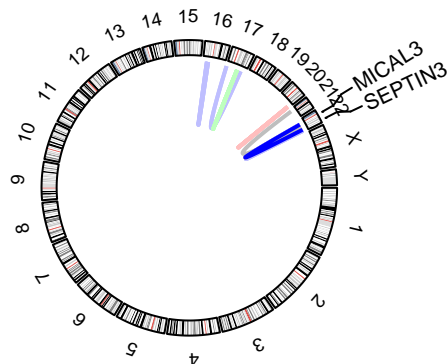
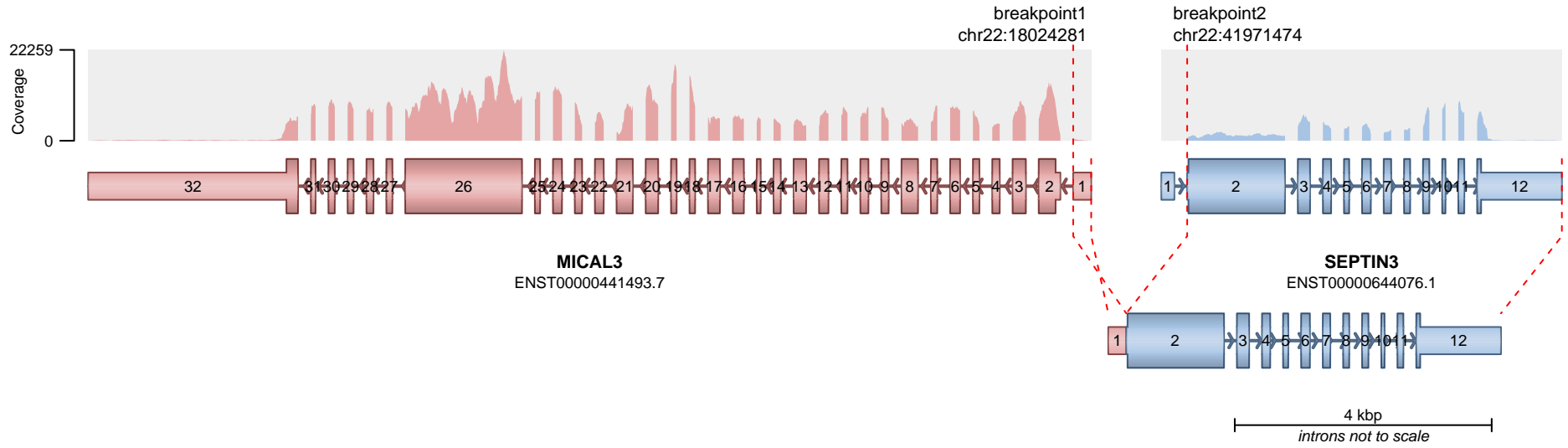
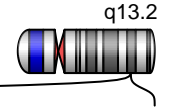
Split reads = 46  
Discordant mates = 0

— translocation    — deletion  
— duplication    — inversion

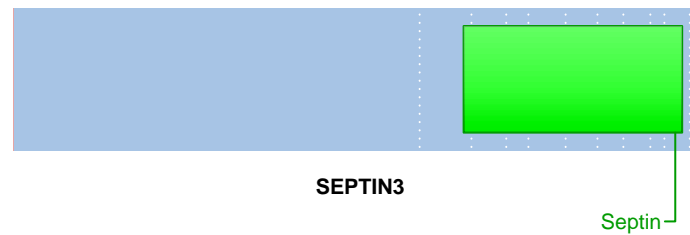
chromosome 22



chromosome 22



RETAINED PROTEIN DOMAINS  
reading frame unclear



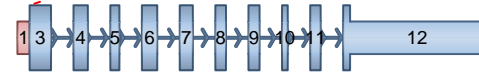
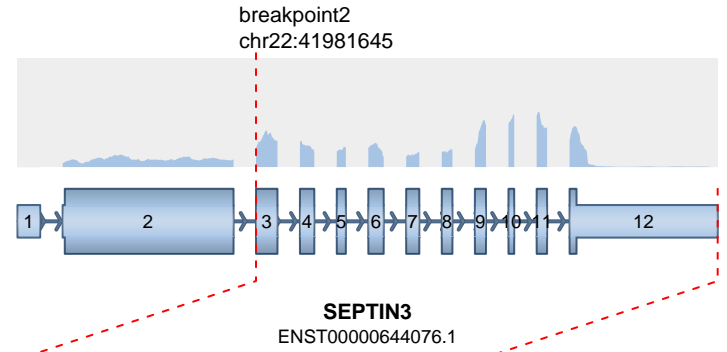
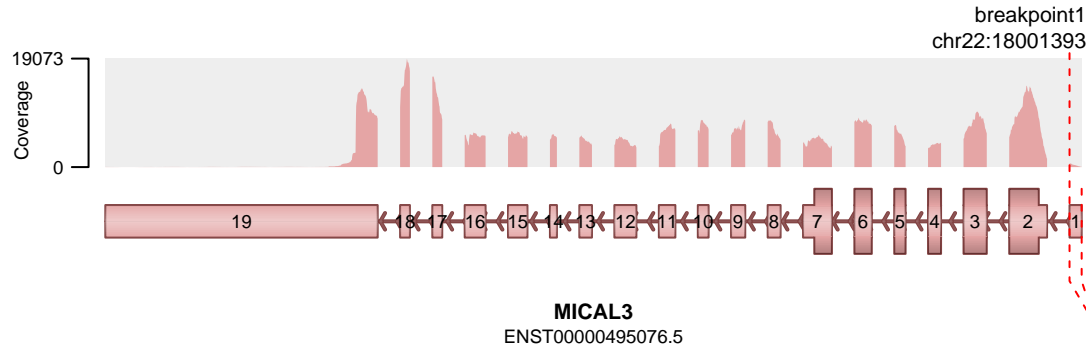
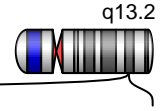
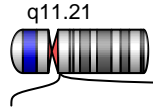
SUPPORTING READ COUNT

Split reads = 28  
Discordant mates = 0

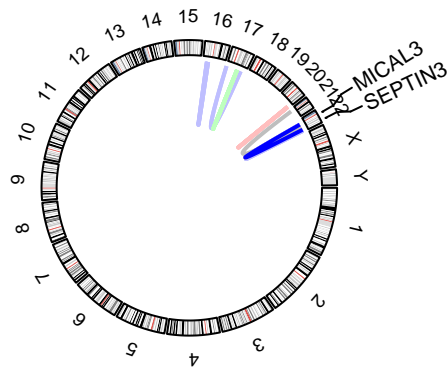
- translocation
- duplication
- deletion
- inversion

chromosome 22

chromosome 22



3 kbp  
introns not to scale



**RETAINED PROTEIN DOMAINS**  
reading frame unclear



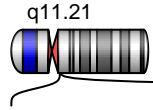
Septin

**SUPPORTING READ COUNT**

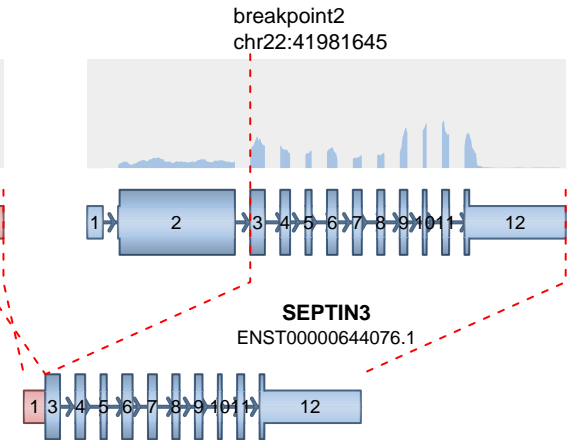
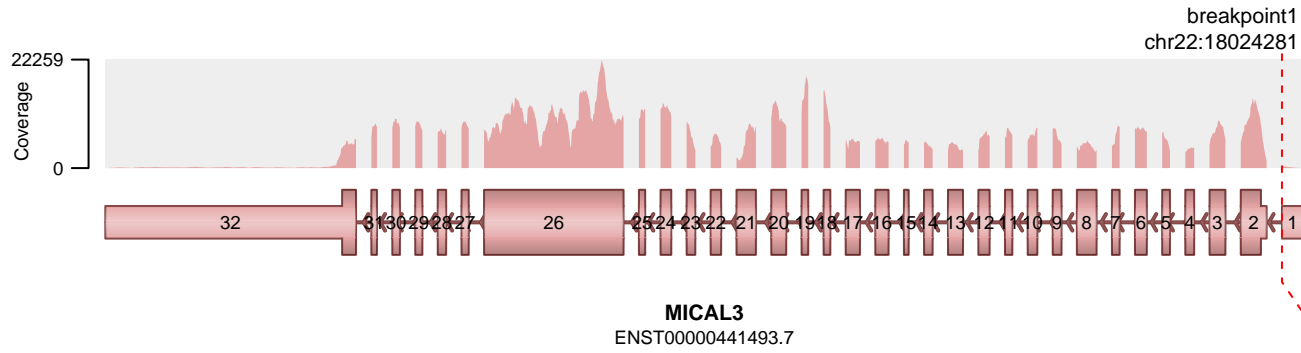
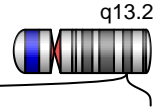
Split reads = 10  
Discordant mates = 0

— translocation    — deletion  
— duplication    — inversion

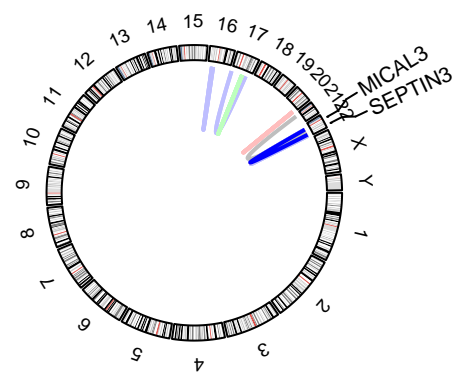
chromosome 22



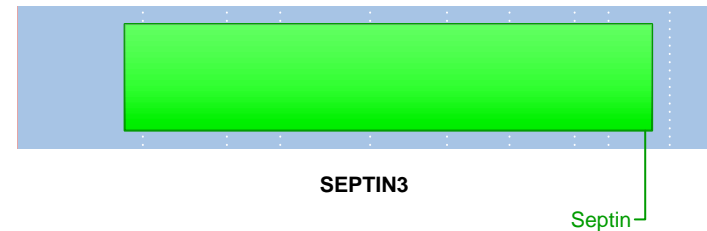
chromosome 22



4 kbp  
*introns not to scale*



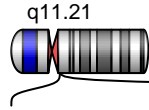
**RETAINED PROTEIN DOMAINS**  
reading frame unclear



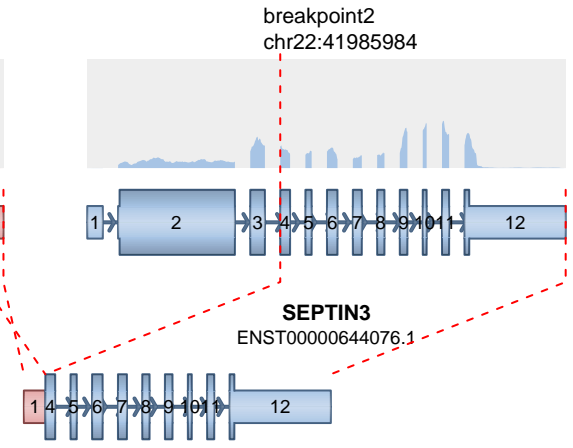
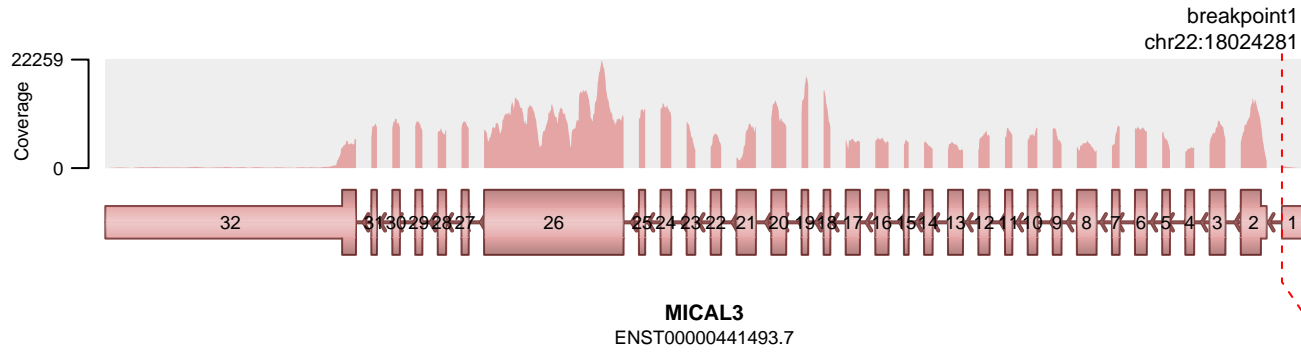
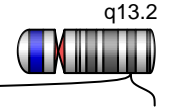
**SUPPORTING READ COUNT**  
Split reads = 7  
Discordant mates = 0

- translocation
- duplication
- deletion
- inversion

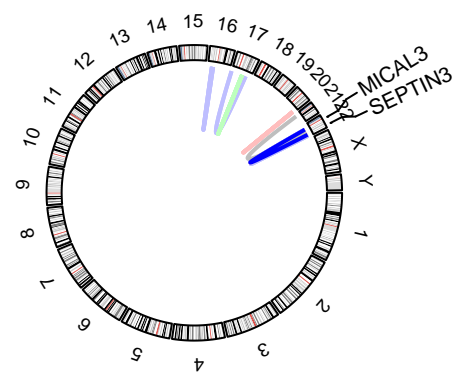
chromosome 22



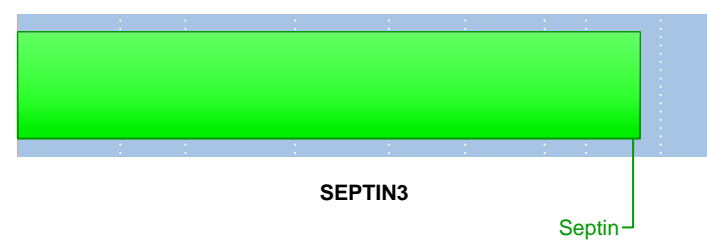
chromosome 22



4 kbp  
introns not to scale



RETAINED PROTEIN DOMAINS  
reading frame unclear

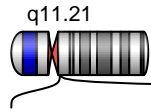


SUPPORTING READ COUNT

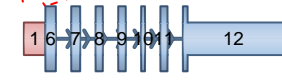
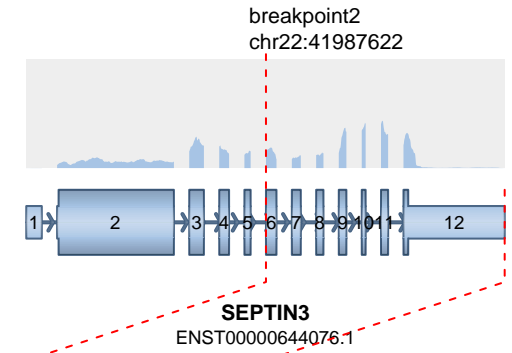
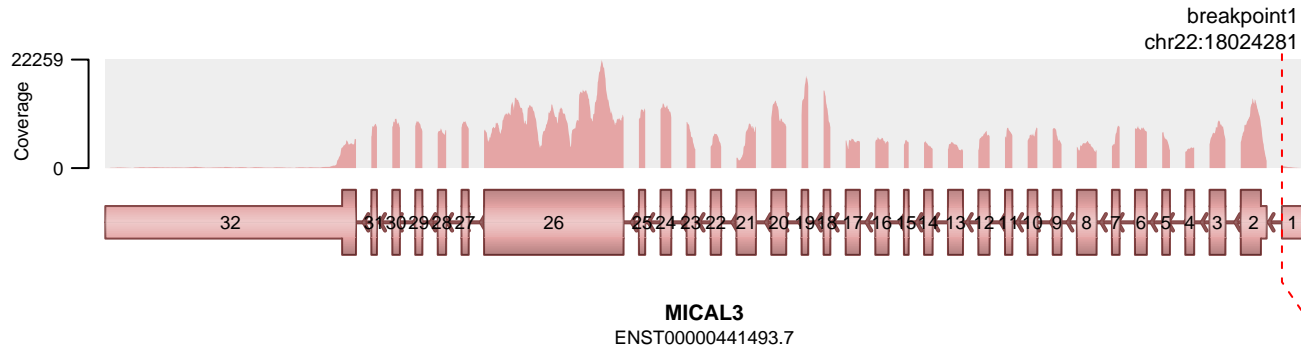
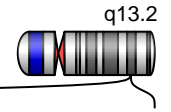
Split reads = 3  
Discordant mates = 0

- translocation
- duplication
- deletion
- inversion

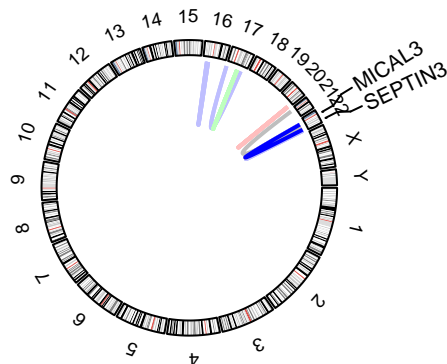
chromosome 22



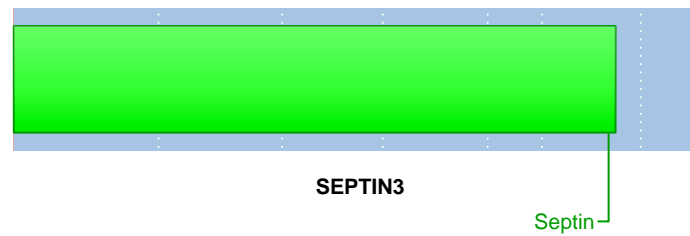
chromosome 22



4 kbp  
introns not to scale



RETAINED PROTEIN DOMAINS  
reading frame unclear

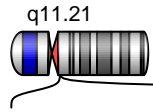


SUPPORTING READ COUNT

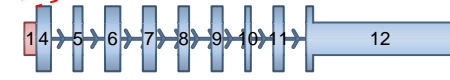
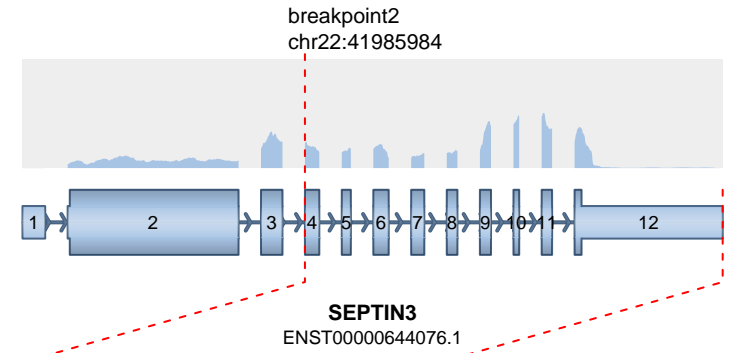
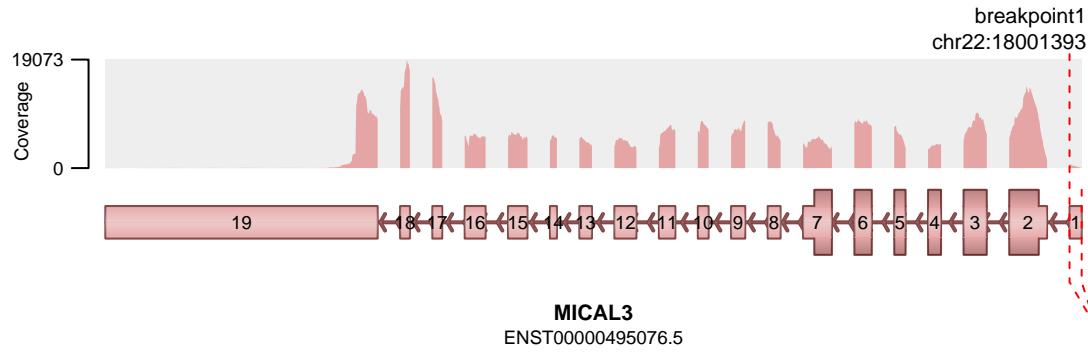
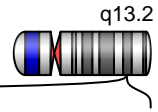
Split reads = 2  
Discordant mates = 0

- translocation
- duplication
- deletion
- inversion

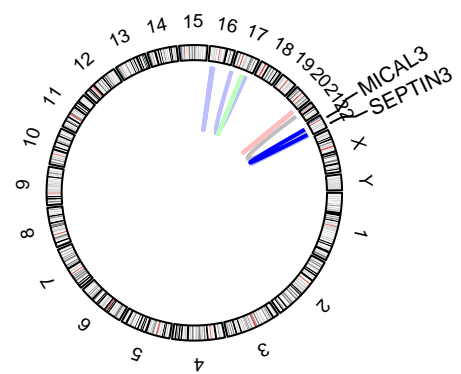
chromosome 22



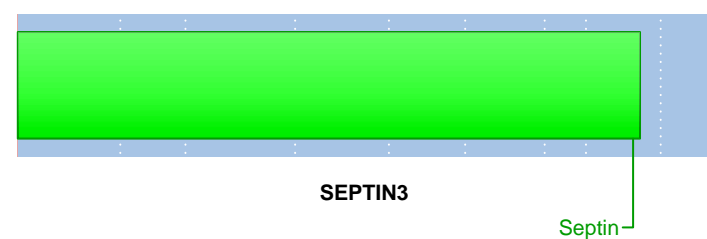
chromosome 22



3 kbp  
introns not to scale



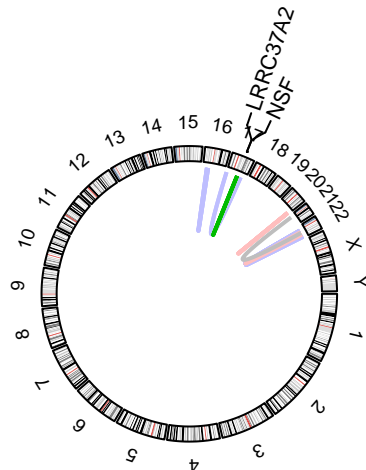
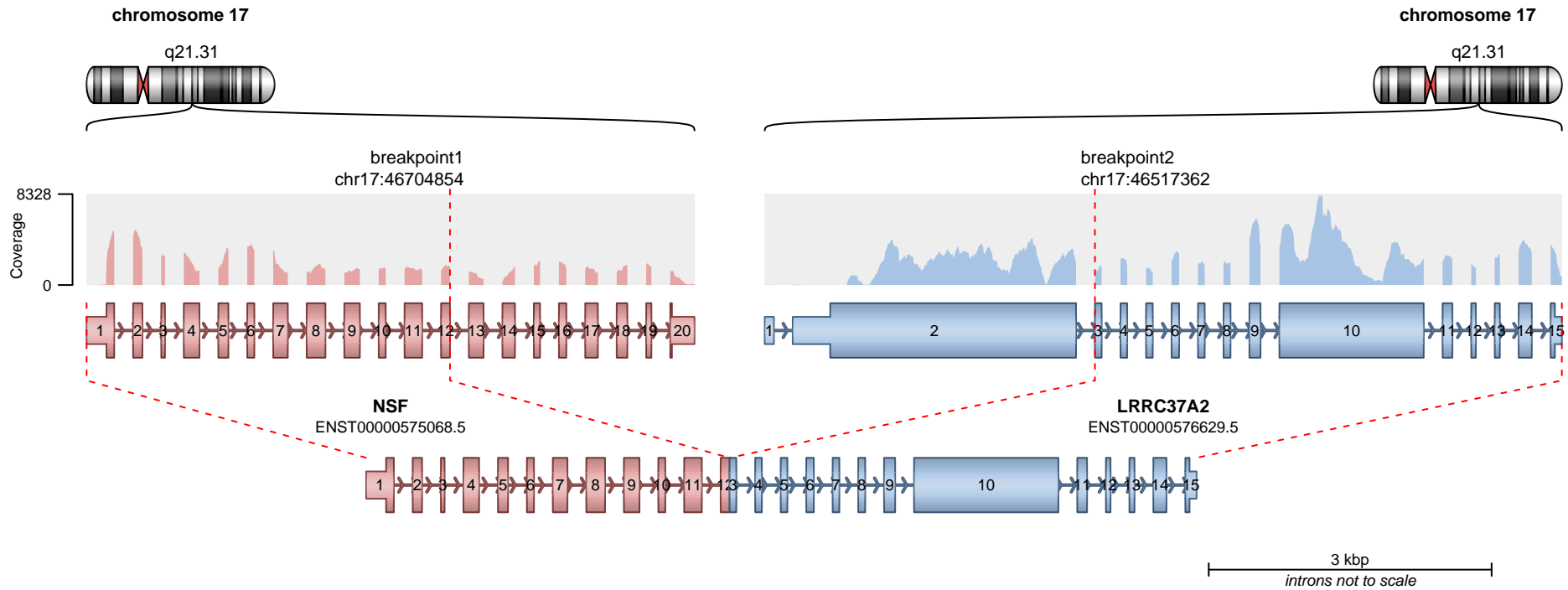
**RETAINED PROTEIN DOMAINS**  
reading frame unclear



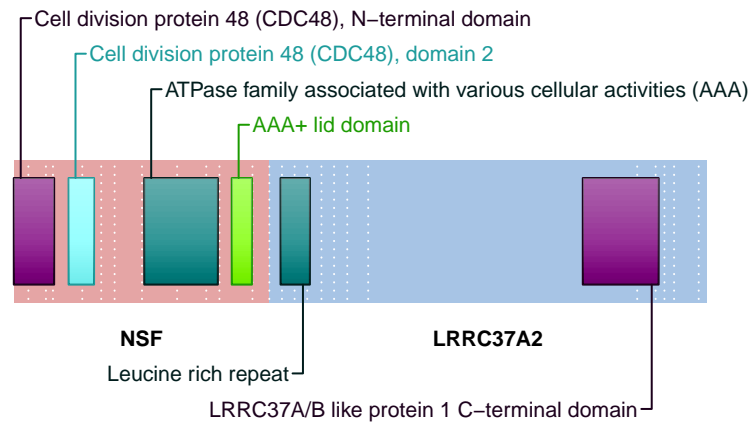
**SUPPORTING READ COUNT**

Split reads = 2  
Discordant mates = 0

— translocation    — deletion  
— duplication    — inversion



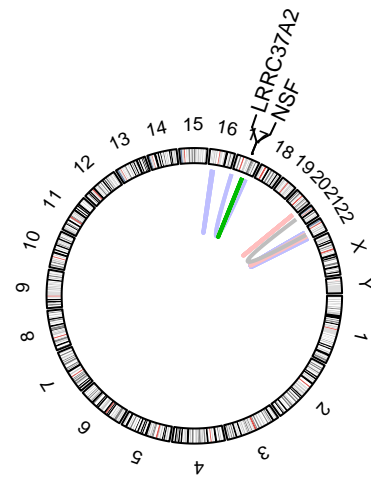
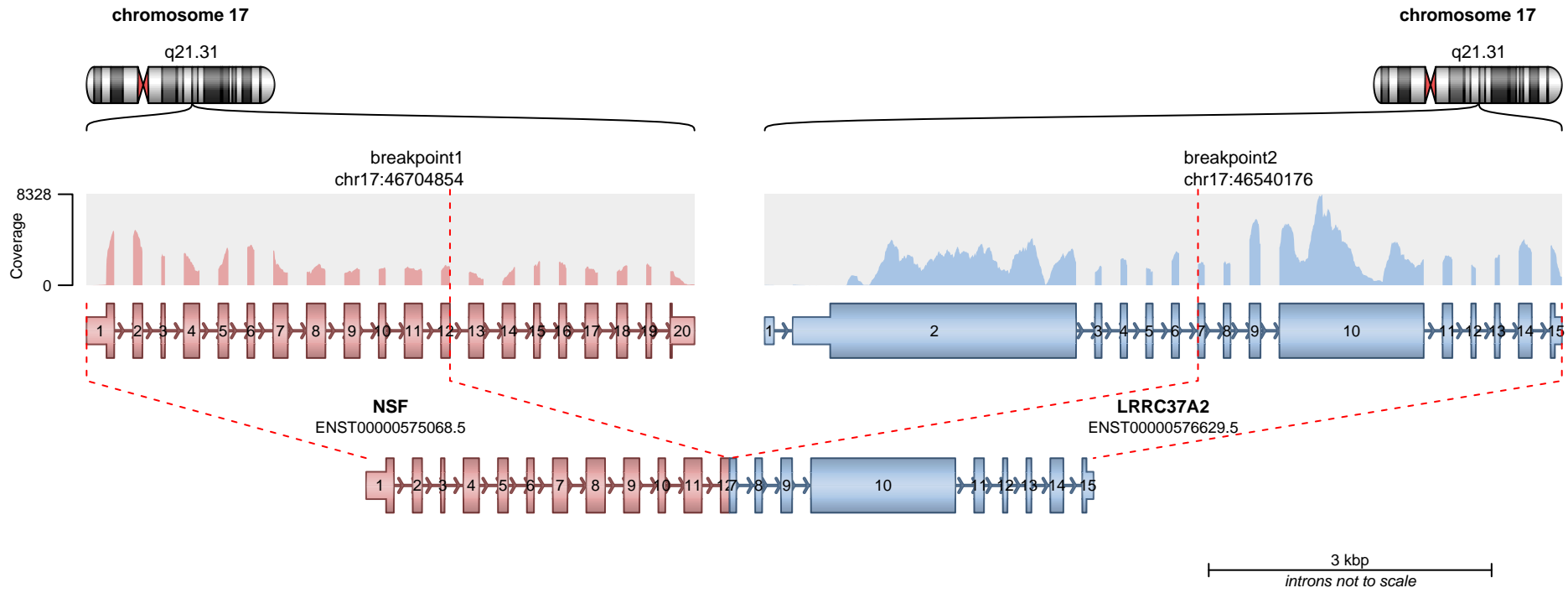
**RETAINED PROTEIN DOMAINS**  
reading frame unclear



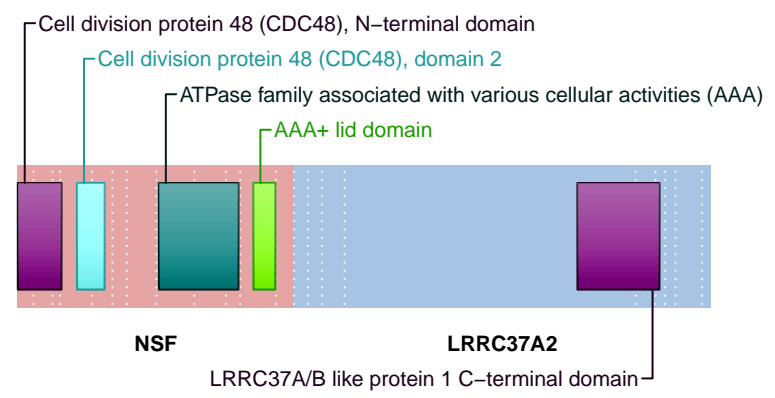
**SUPPORTING READ COUNT**

Split reads = 42  
Discordant mates = 1

— translocation — deletion  
— duplication — inversion



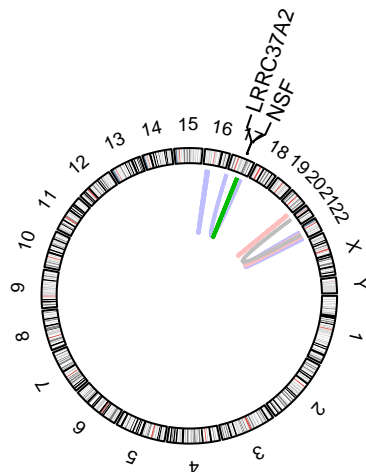
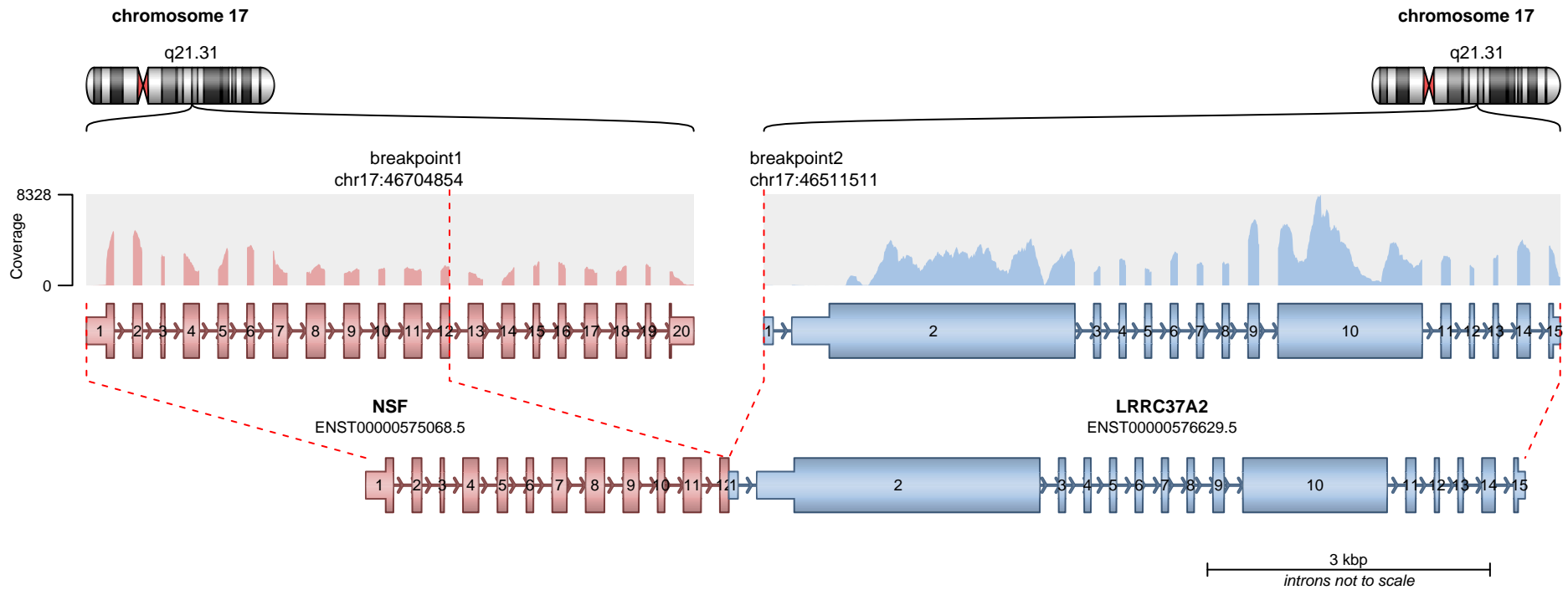
**RETAINED PROTEIN DOMAINS**  
reading frame unclear



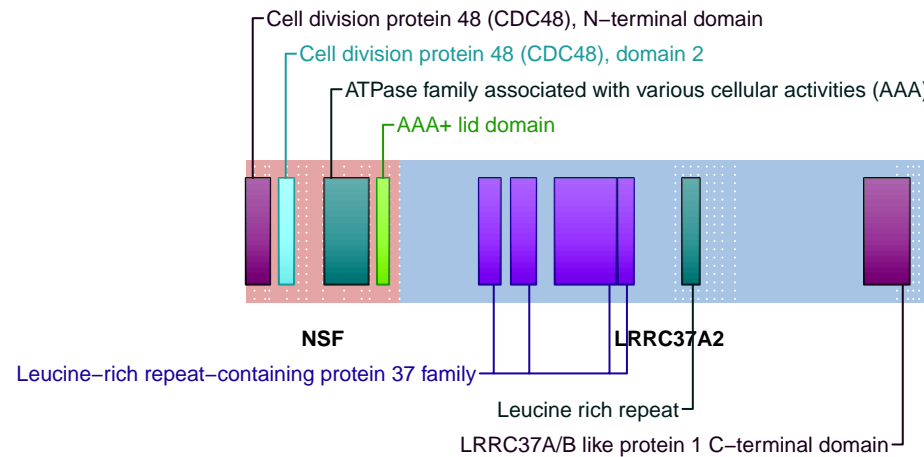
**SUPPORTING READ COUNT**

Split reads = 4  
Discordant mates = 0

- translocation
- duplication
- deletion
- inversion



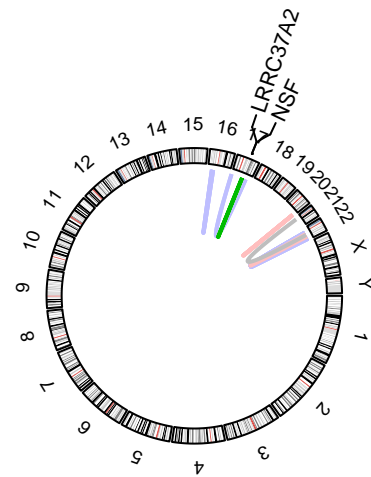
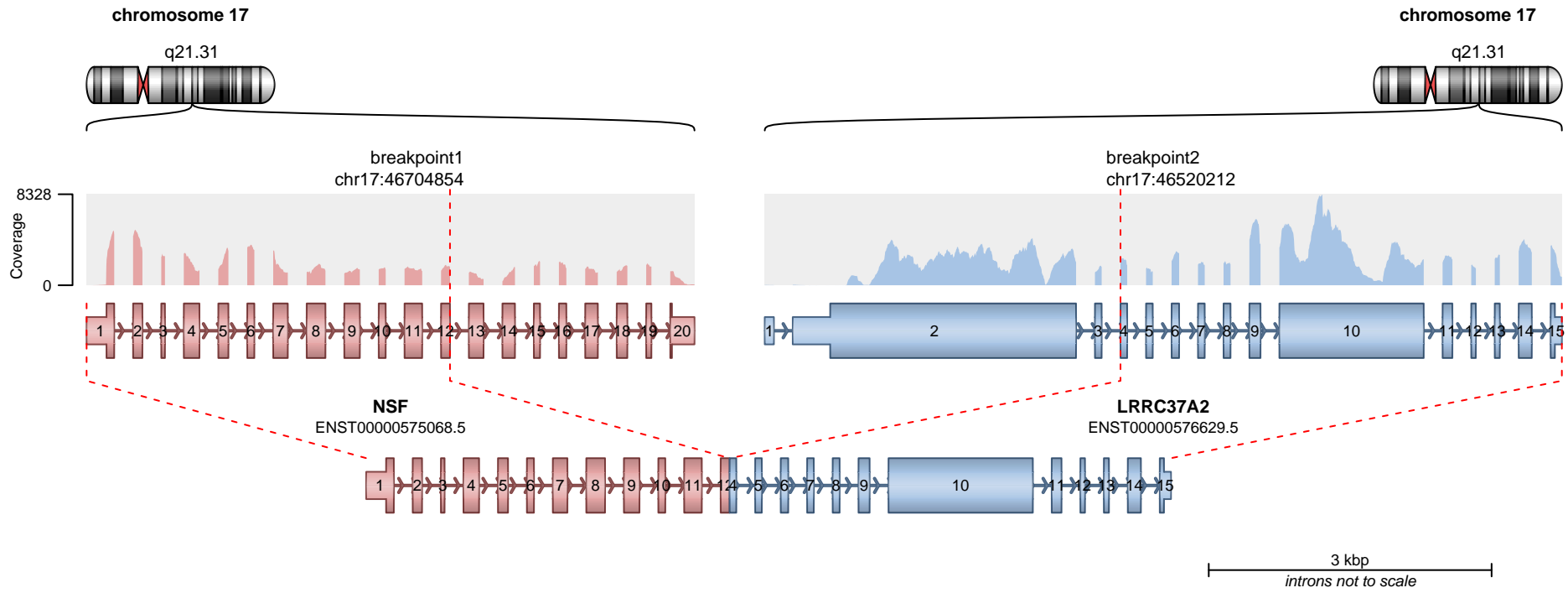
**RETAINED PROTEIN DOMAINS**  
reading frame unclear



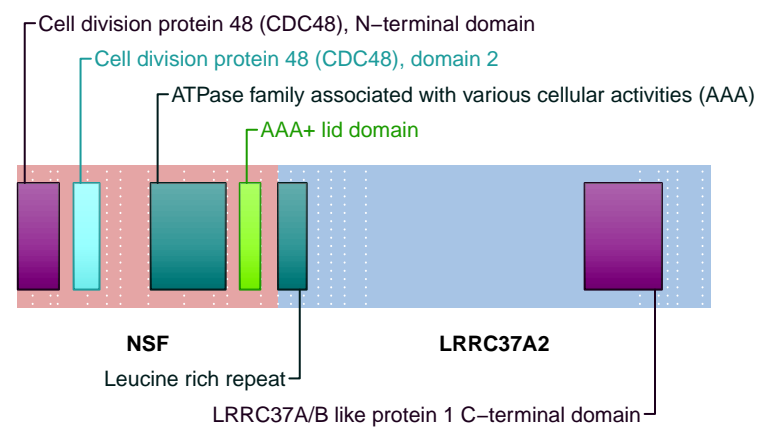
**SUPPORTING READ COUNT**

Split reads = 1  
Discordant mates = 1

— translocation — deletion  
— duplication — inversion



**RETAINED PROTEIN DOMAINS**  
reading frame unclear

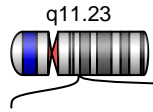


**SUPPORTING READ COUNT**

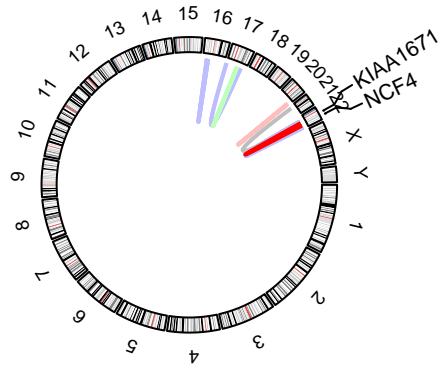
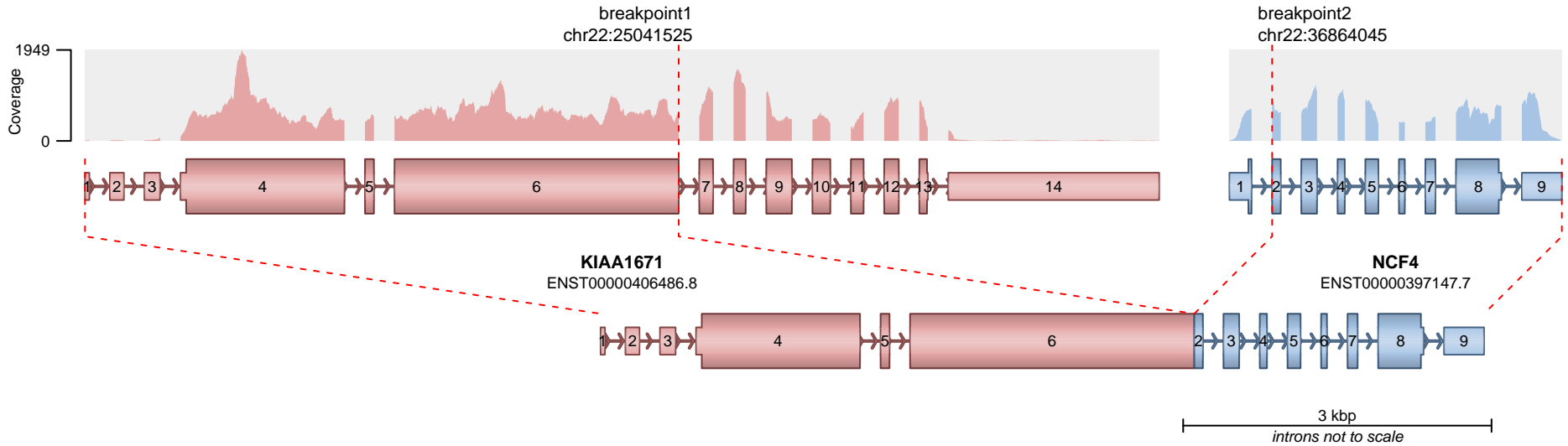
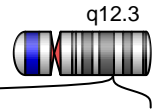
Split reads = 1  
Discordant mates = 0

- translocation
- duplication
- deletion
- inversion

chromosome 22

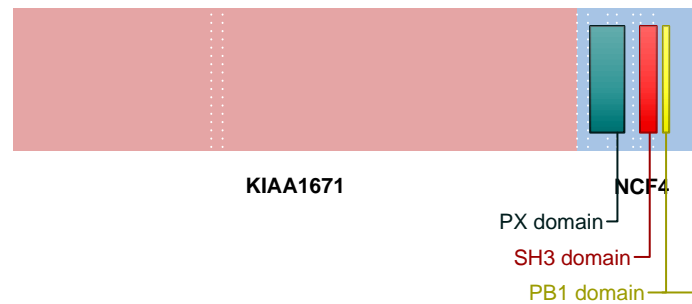


chromosome 22



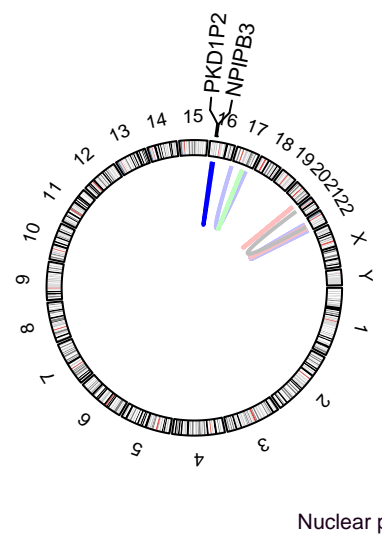
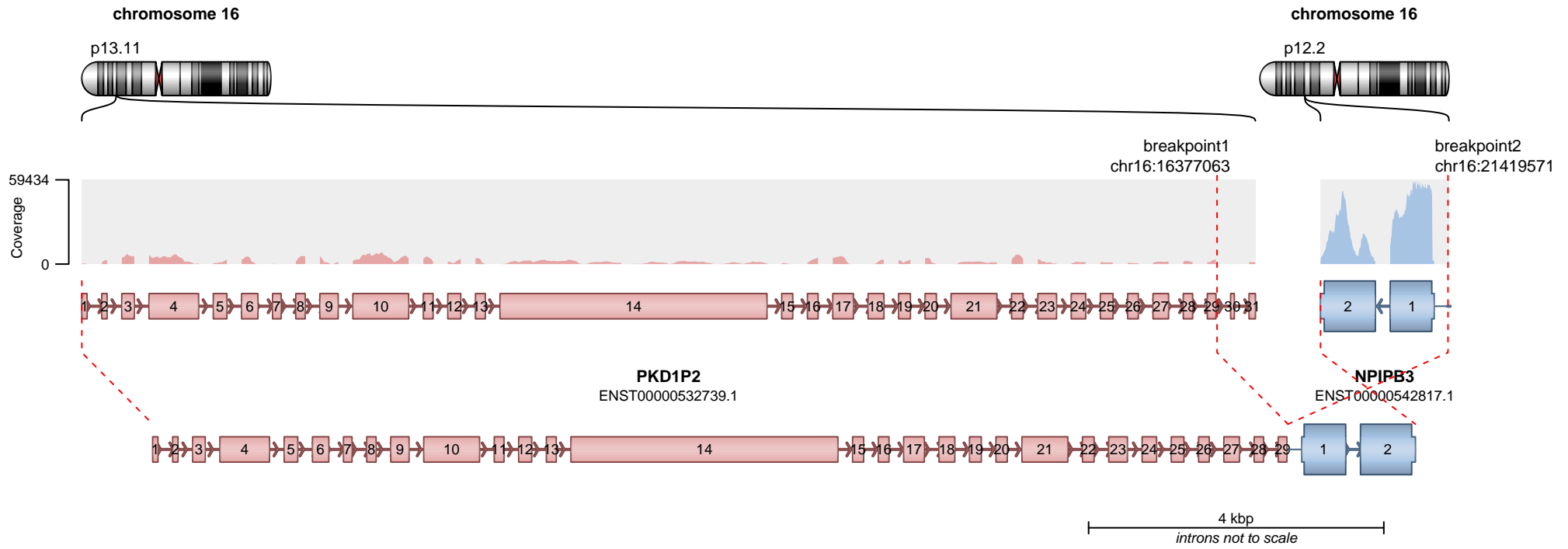
- translocation
- duplication
- deletion
- inversion

RETAINED PROTEIN DOMAINS  
reading frame unclear

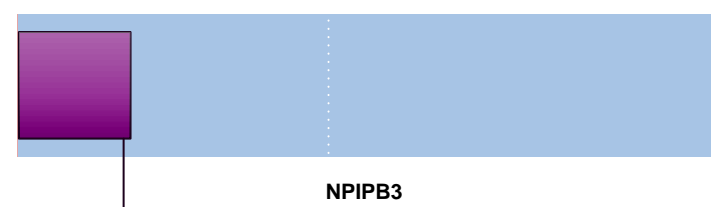


SUPPORTING READ COUNT

Split reads = 24  
Discordant mates = 0



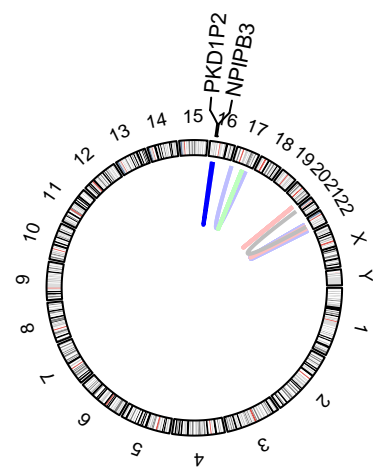
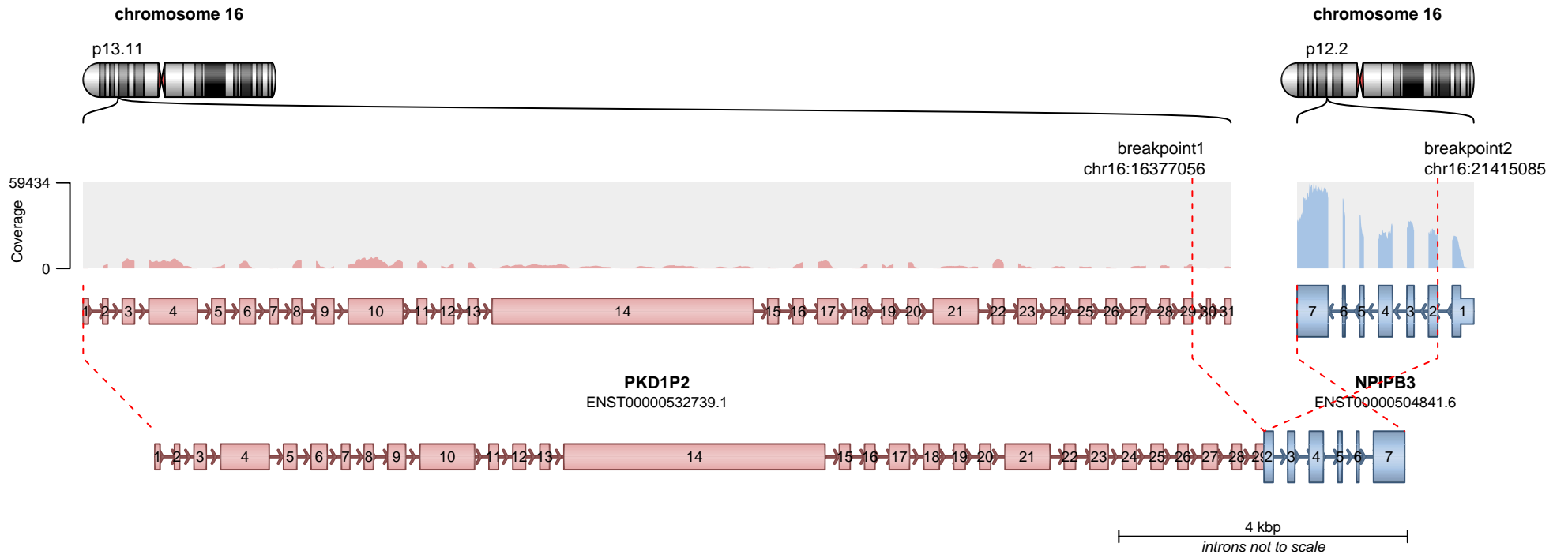
**RETAINED PROTEIN DOMAINS**  
reading frame unclear



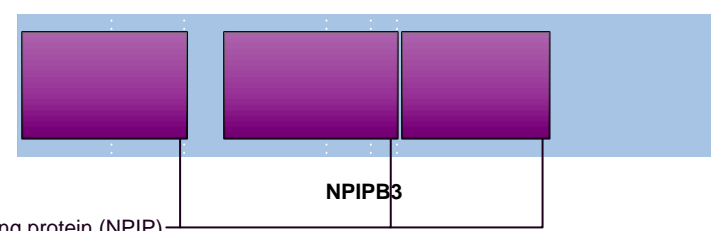
**SUPPORTING READ COUNT**

Split reads = 22  
Discordant mates = 0

- translocation
- duplication
- deletion
- inversion



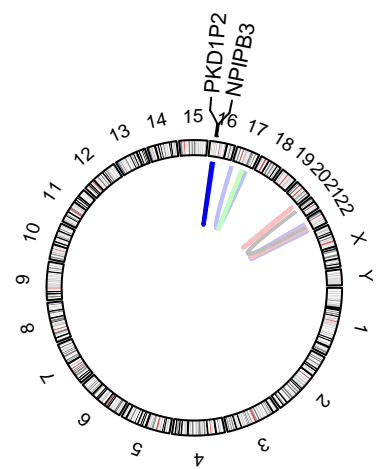
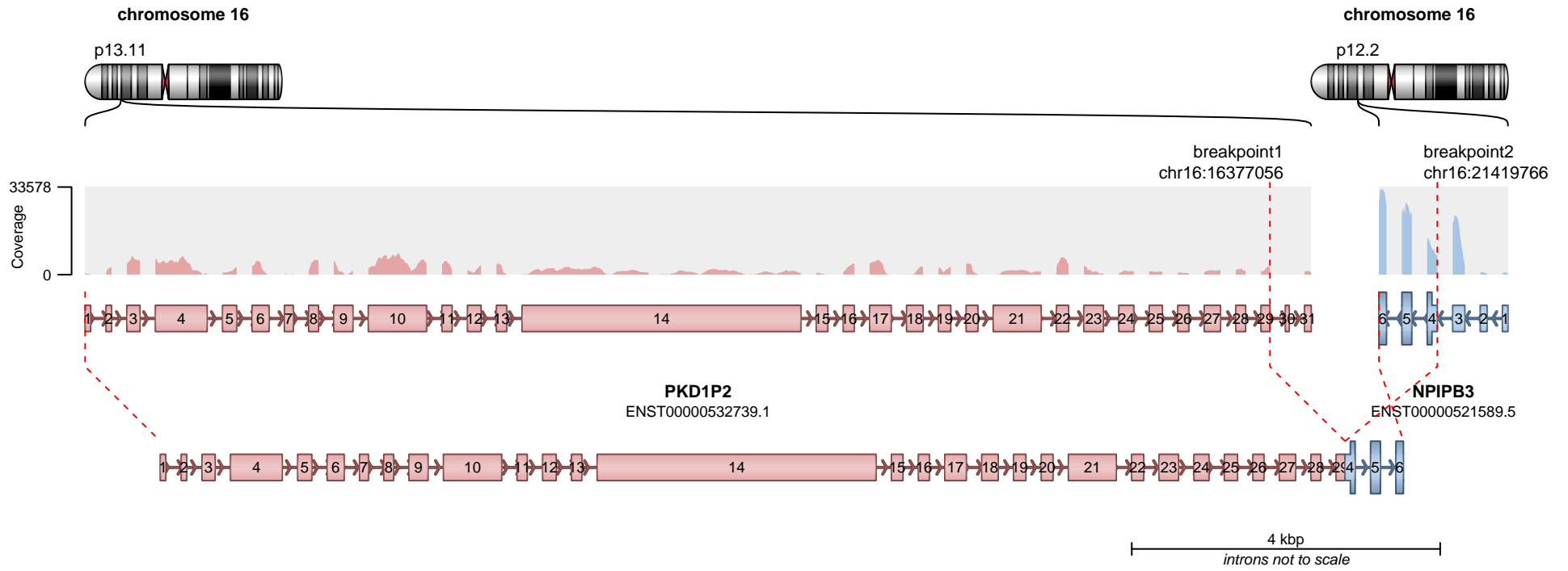
**RETAINED PROTEIN DOMAINS**  
reading frame unclear



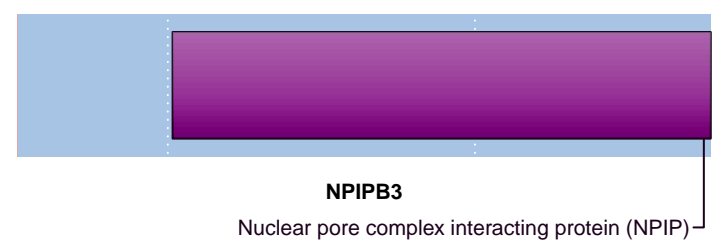
**SUPPORTING READ COUNT**

Split reads = 10  
Discordant mates = 0

- translocation
- duplication
- deletion
- inversion



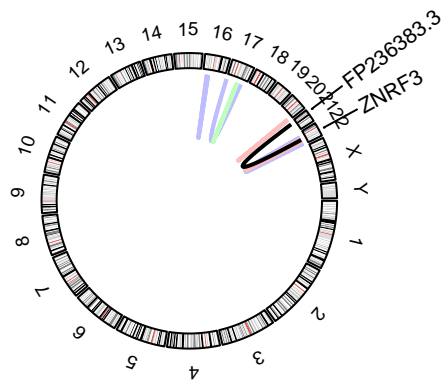
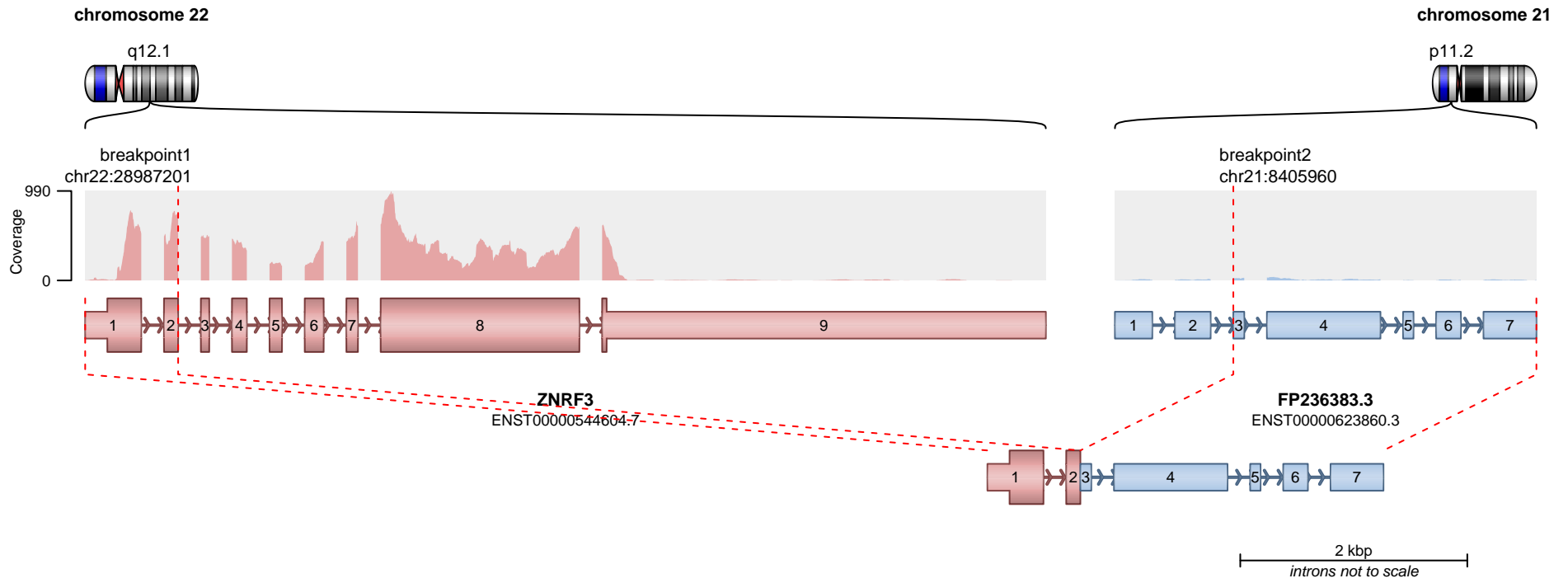
**RETAINED PROTEIN DOMAINS**  
reading frame unclear



**SUPPORTING READ COUNT**

Split reads = 1  
Discordant mates = 0

- translocation
- duplication
- deletion
- inversion



**RETAINED PROTEIN DOMAINS**  
reading frame unclear



**SUPPORTING READ COUNT**

Split reads = 6  
Discordant mates = 0

— translocation — deletion  
— duplication — inversion