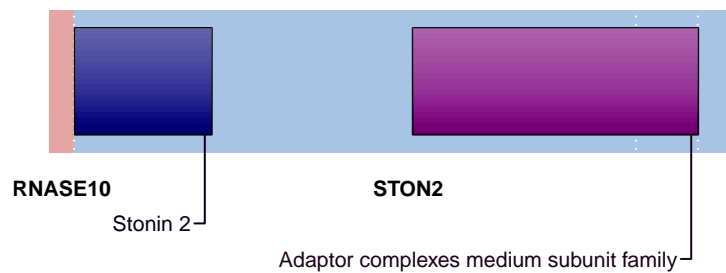


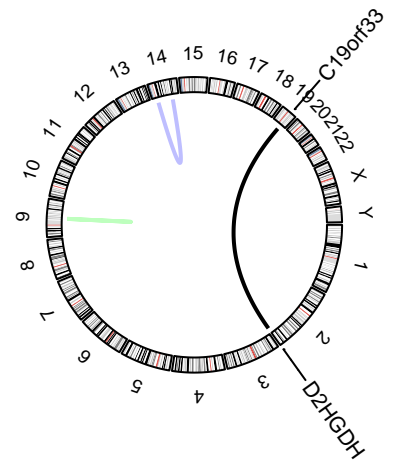
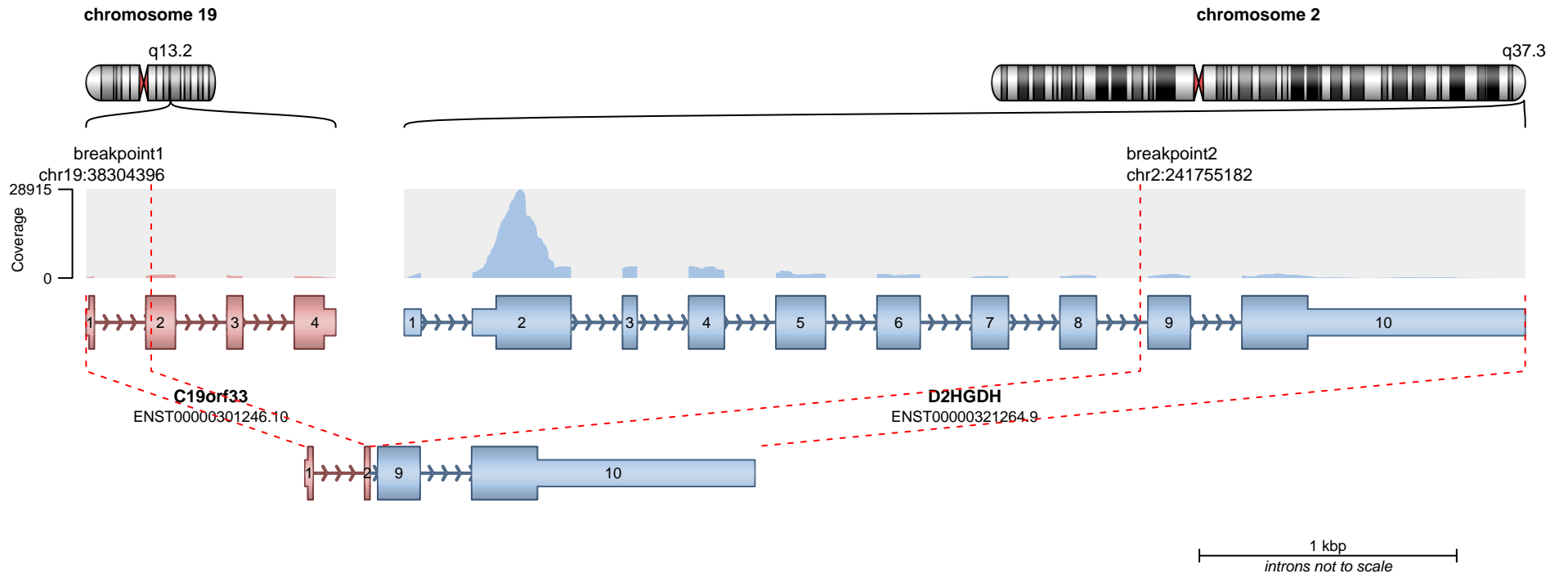
RETAINED PROTEIN DOMAINS
reading frame unclear



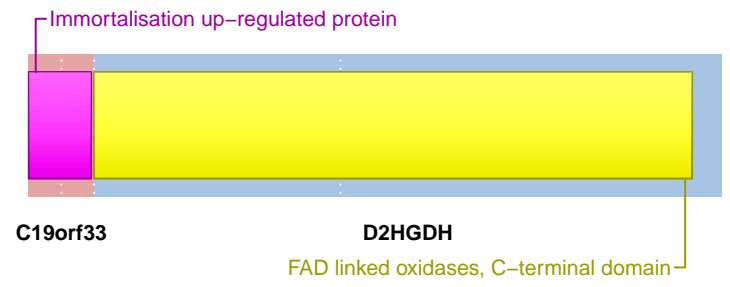
SUPPORTING READ COUNT

Split reads = 11
Discordant mates = 0

- translocation
- duplication
- deletion
- inversion



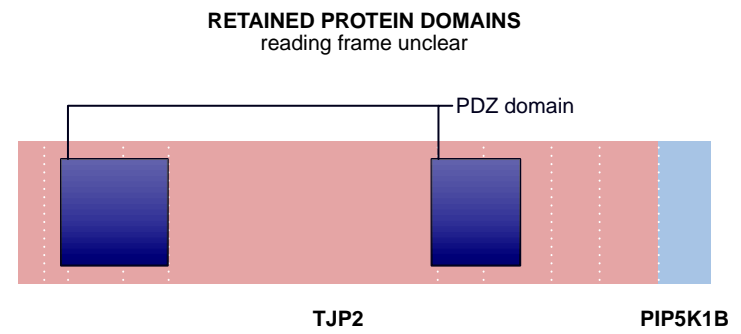
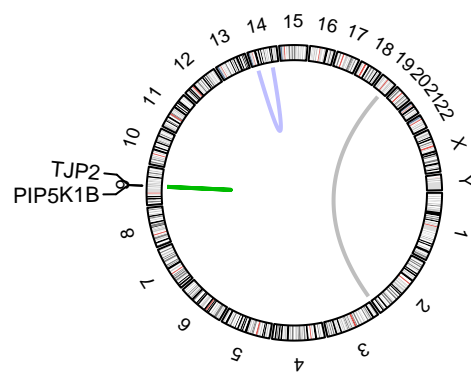
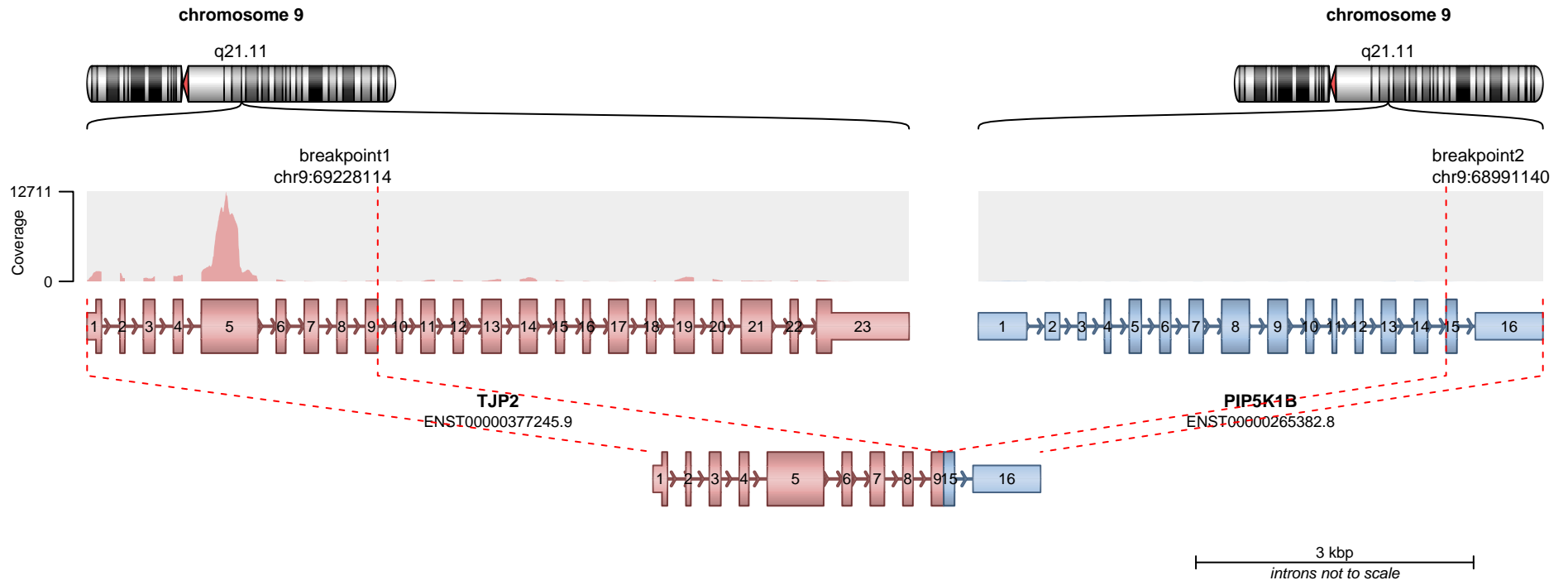
RETAINED PROTEIN DOMAINS
reading frame unclear



SUPPORTING READ COUNT

Split reads = 8
Discordant mates = 0

- translocation
- duplication
- deletion
- inversion



SUPPORTING READ COUNT

Split reads = 6
Discordant mates = 0

— translocation — deletion
— duplication — inversion