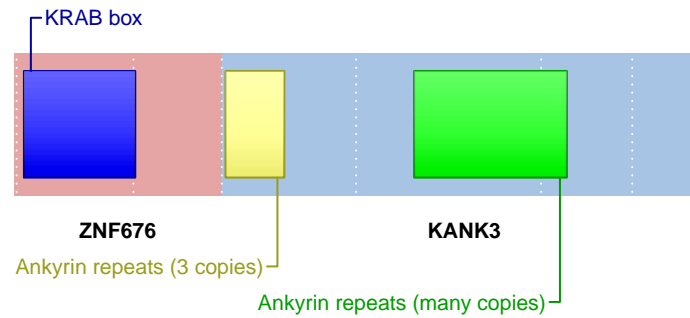


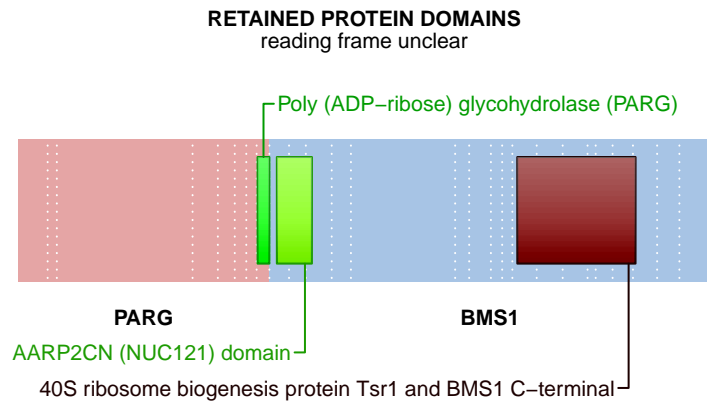
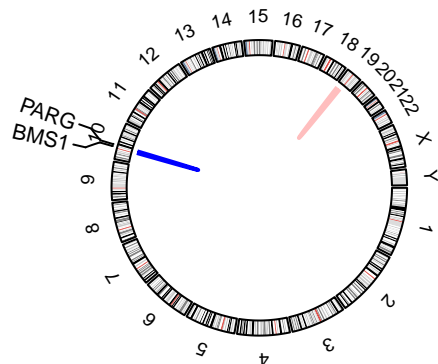
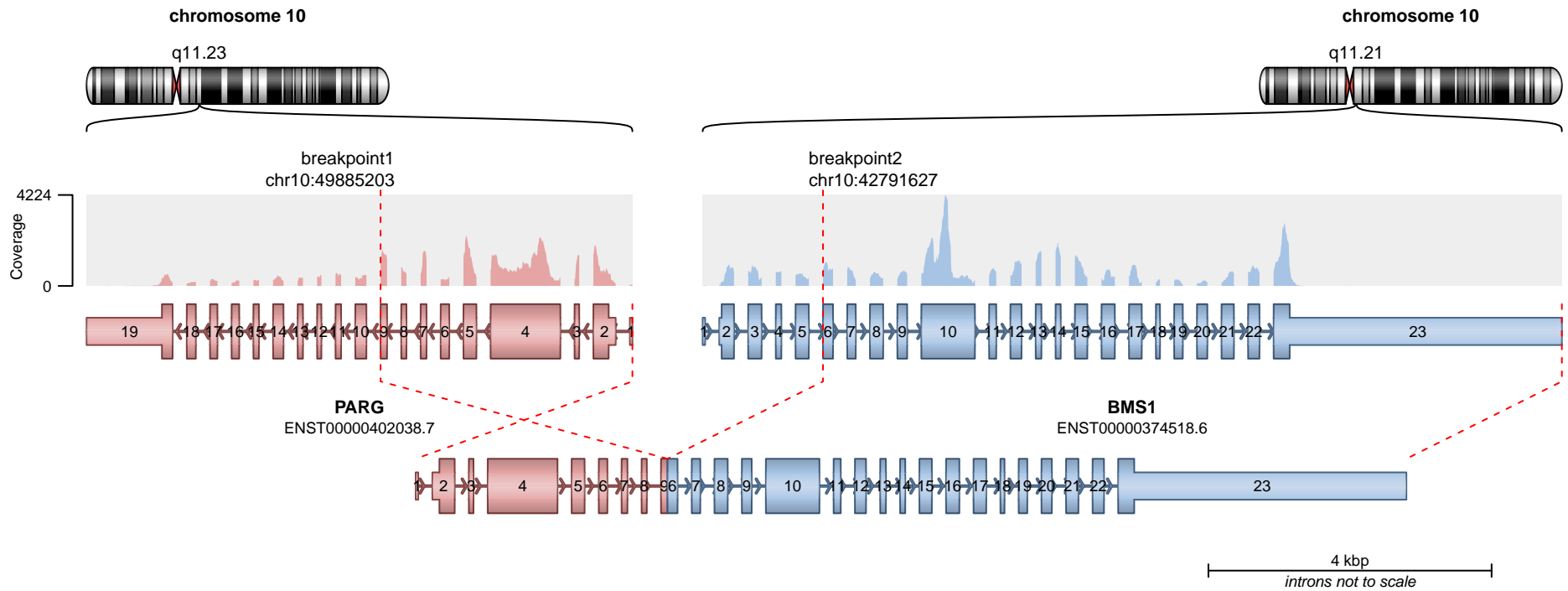
RETAINED PROTEIN DOMAINS
reading frame unclear



SUPPORTING READ COUNT

Split reads = 116
Discordant mates = 0

- translocation
- duplication
- deletion
- inversion



SUPPORTING READ COUNT

Split reads = 62
Discordant mates = 0

— translocation — deletion
— duplication — inversion