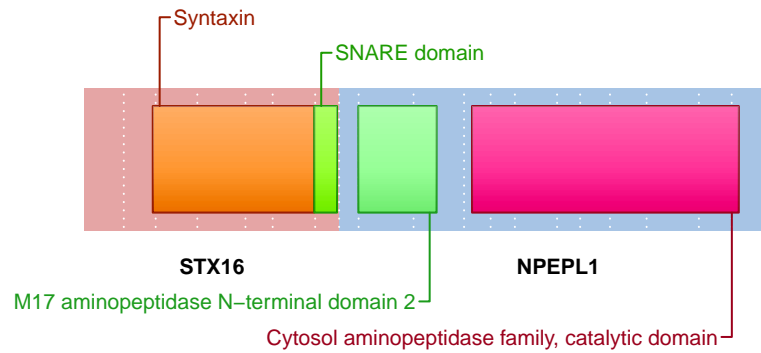


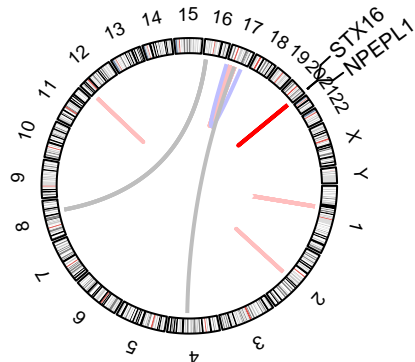
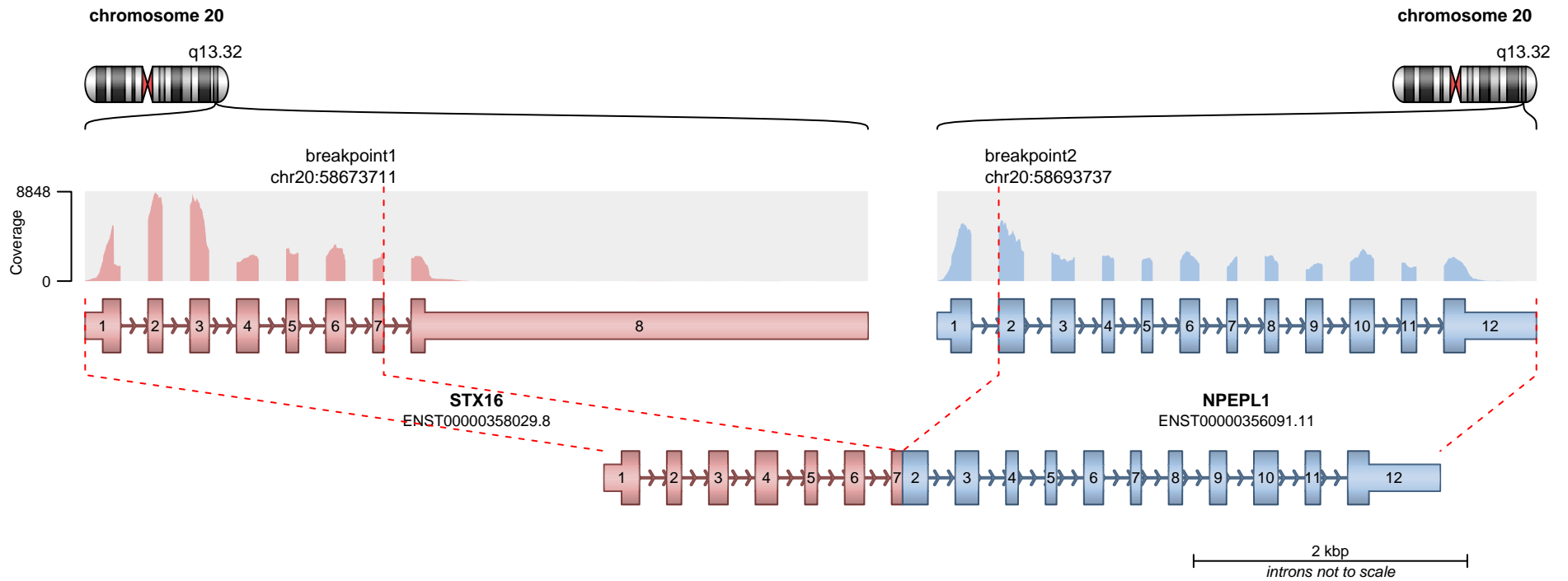
**RETAINED PROTEIN DOMAINS**  
reading frame unclear



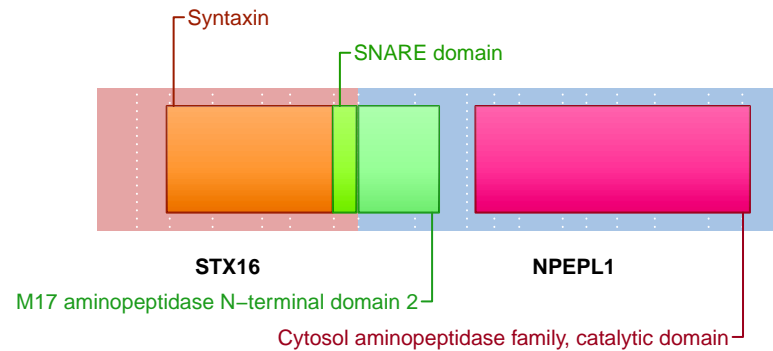
**SUPPORTING READ COUNT**

Split reads = 109  
Discordant mates = 3

- translocation
- duplication
- deletion
- inversion



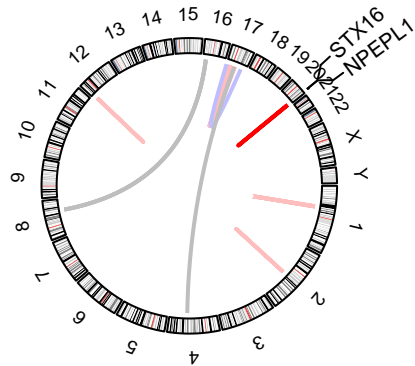
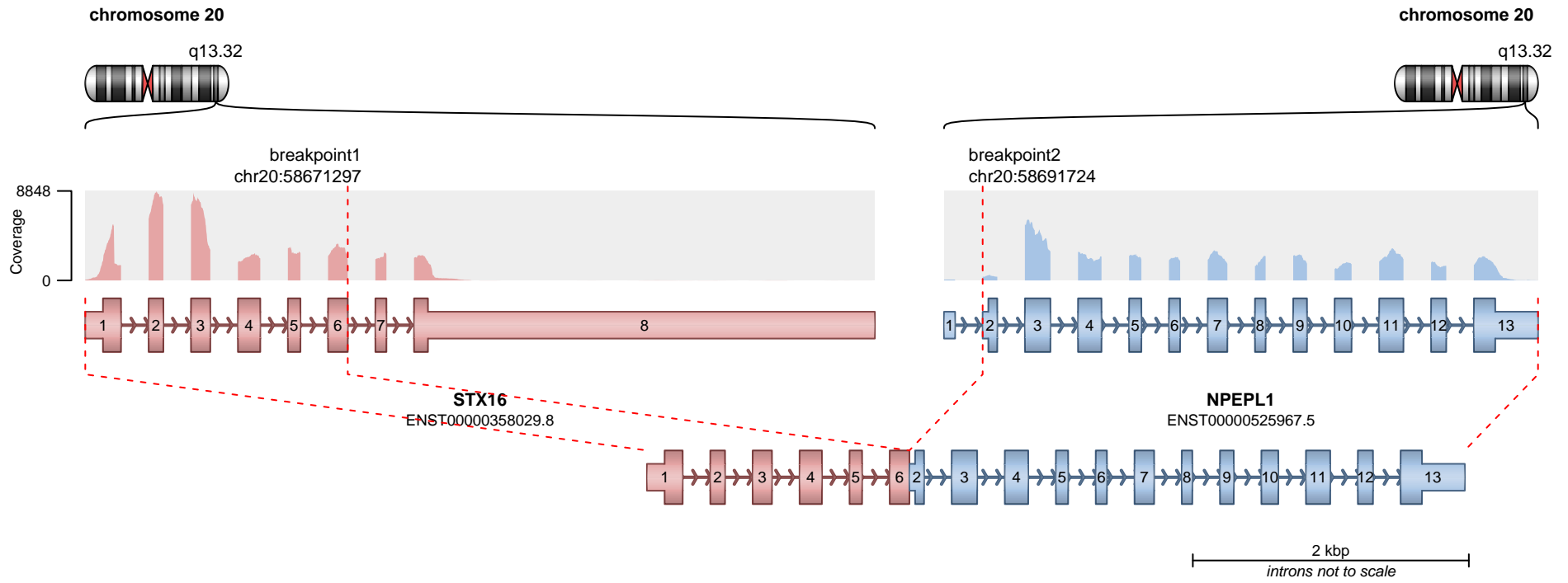
**RETAINED PROTEIN DOMAINS**  
reading frame unclear



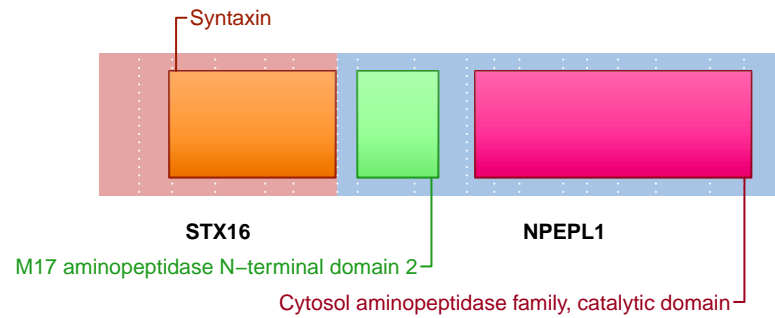
**SUPPORTING READ COUNT**

Split reads = 2  
Discordant mates = 0

- translocation
- duplication
- deletion
- inversion



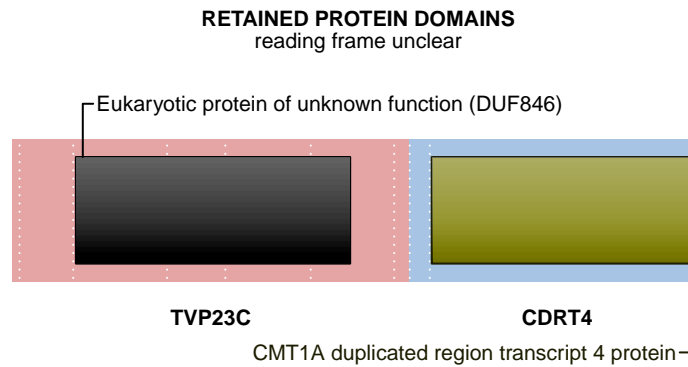
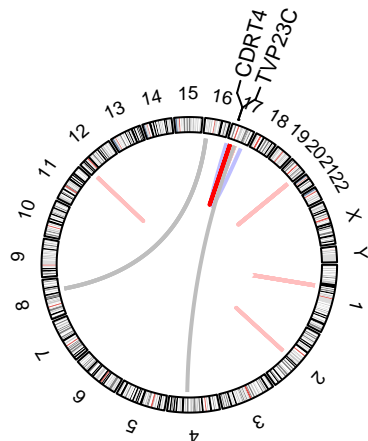
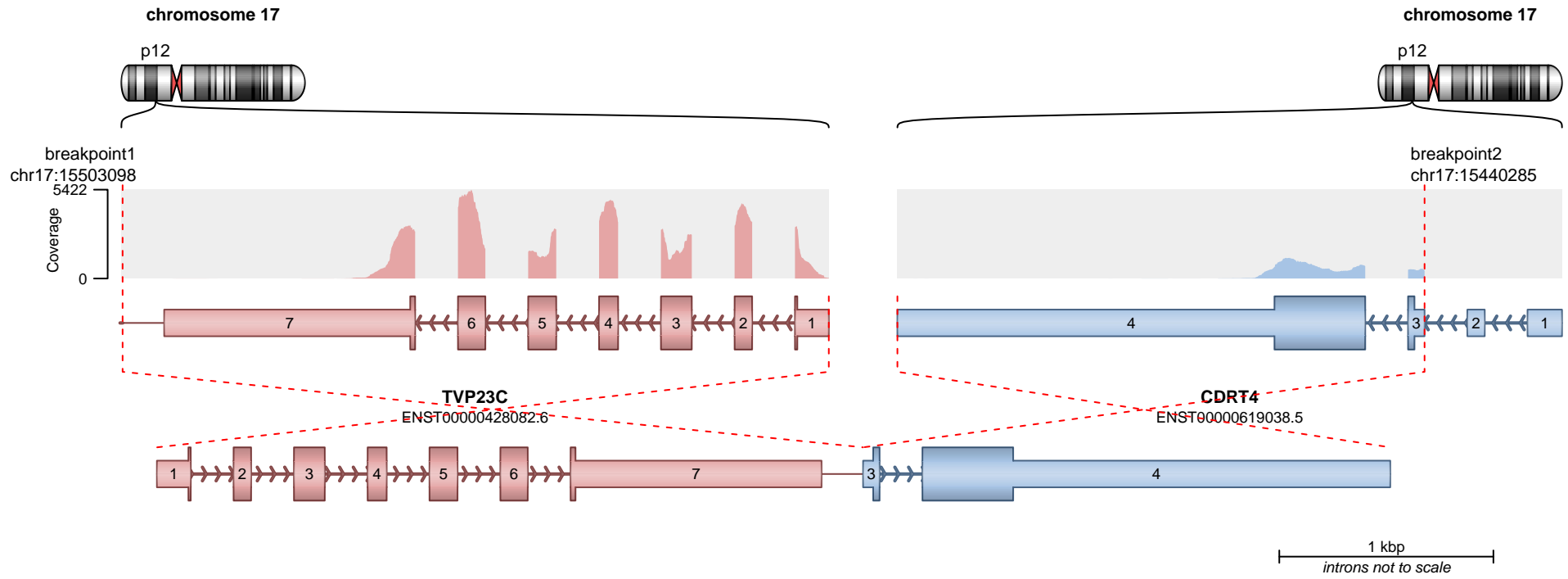
**RETAINED PROTEIN DOMAINS**  
reading frame unclear



**SUPPORTING READ COUNT**

Split reads = 1  
Discordant mates = 2

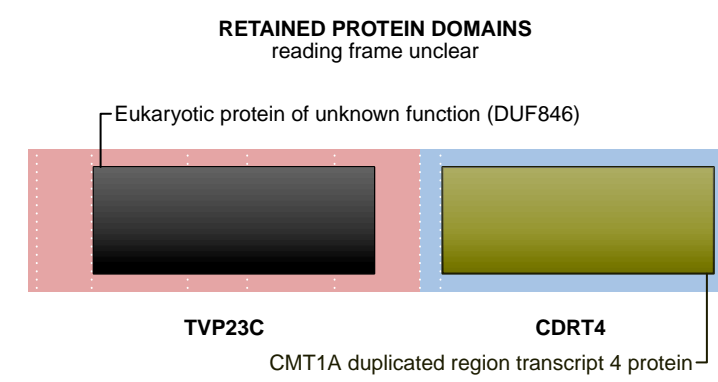
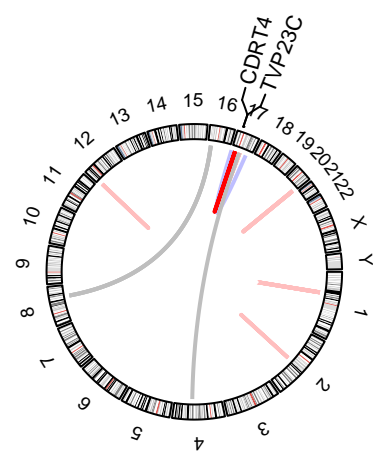
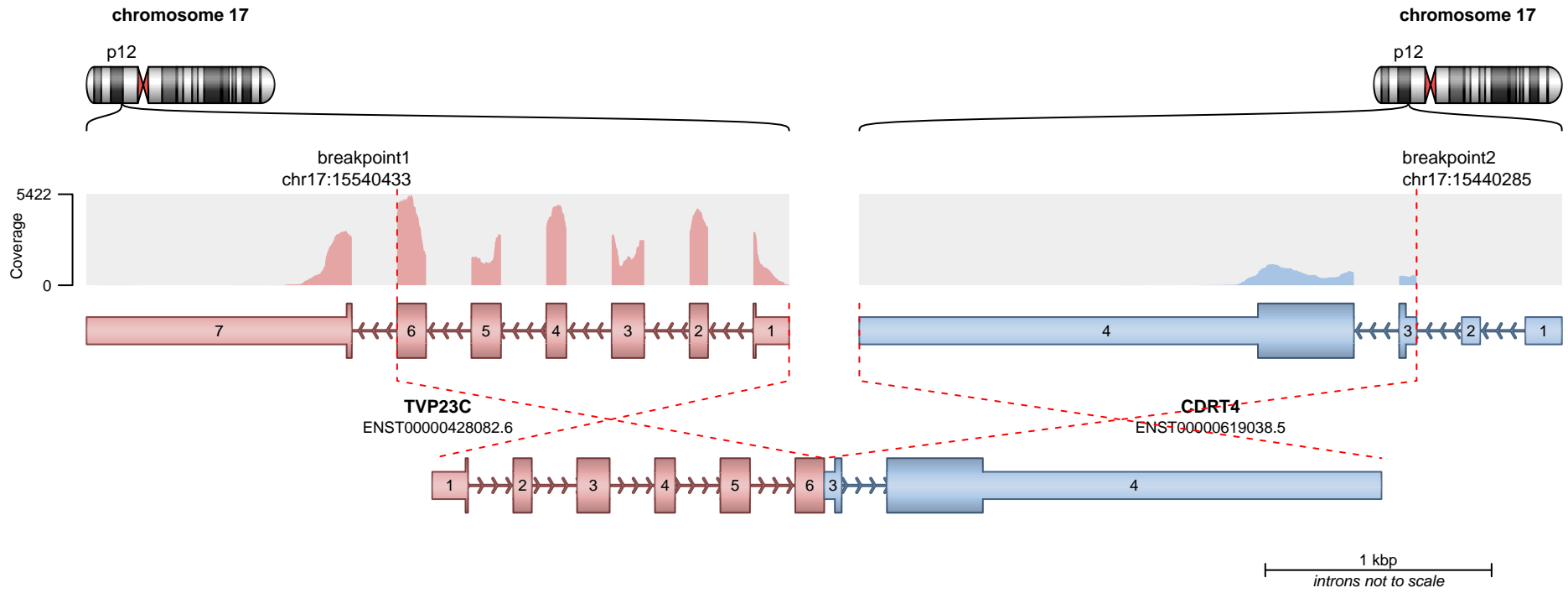
- translocation
- duplication
- deletion
- inversion



**SUPPORTING READ COUNT**

Split reads = 97  
Discordant mates = 1

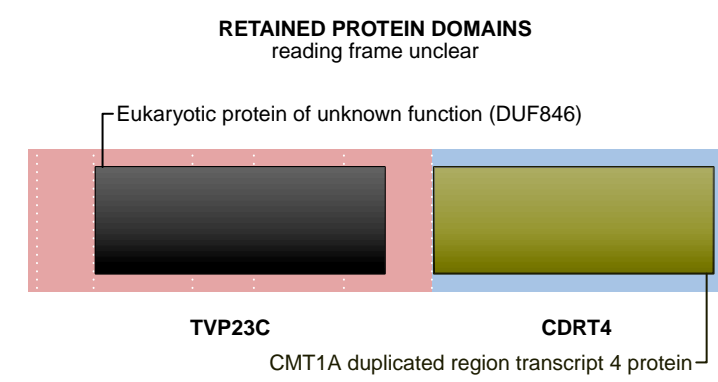
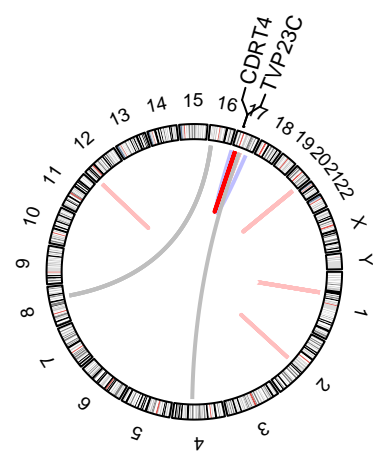
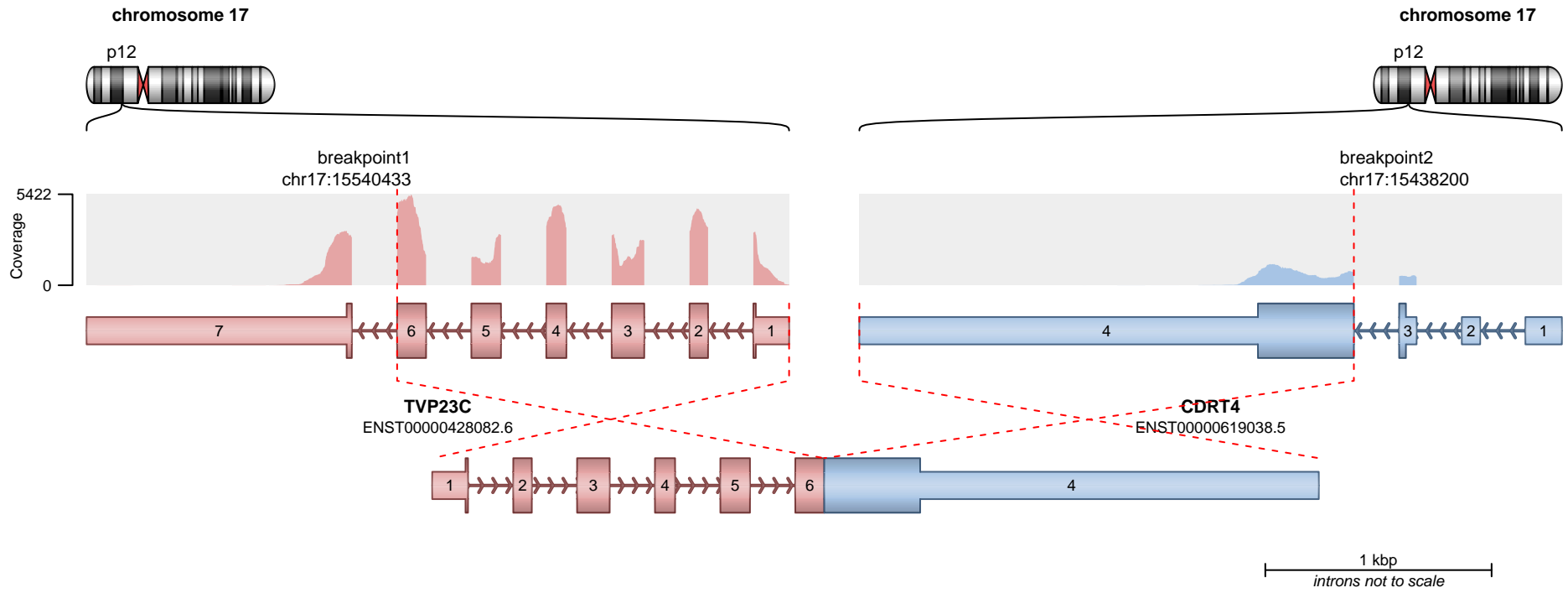
— translocation — deletion  
— duplication — inversion



**SUPPORTING READ COUNT**

Split reads = 64  
Discordant mates = 0

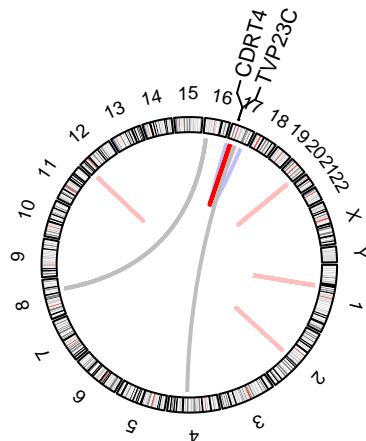
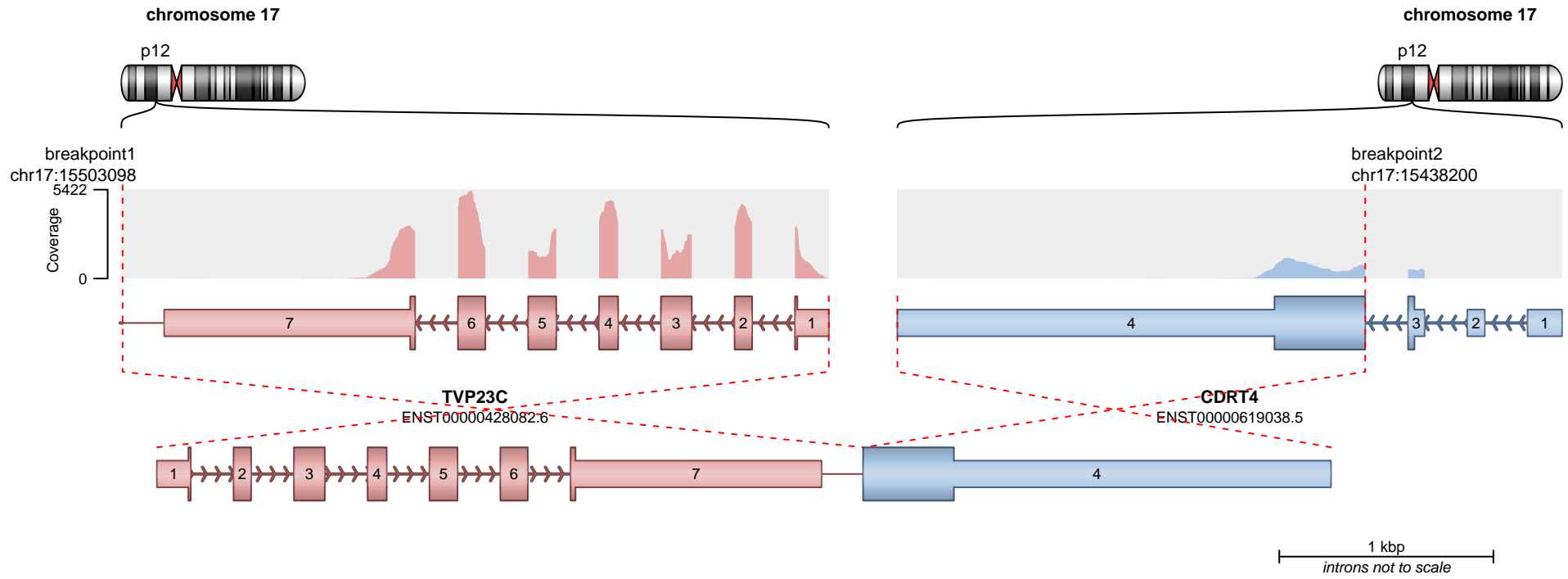
— translocation — deletion  
— duplication — inversion



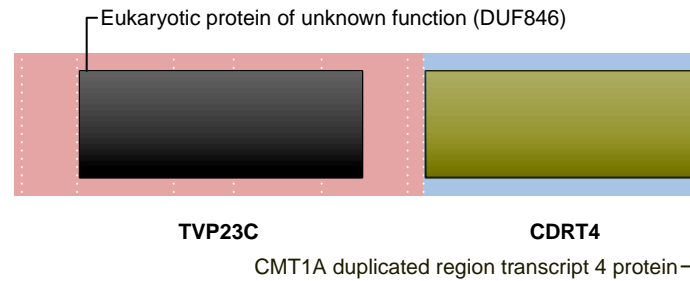
**SUPPORTING READ COUNT**

Split reads = 27  
Discordant mates = 0

— translocation — deletion  
— duplication — inversion



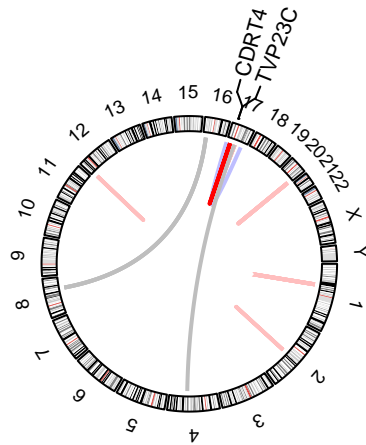
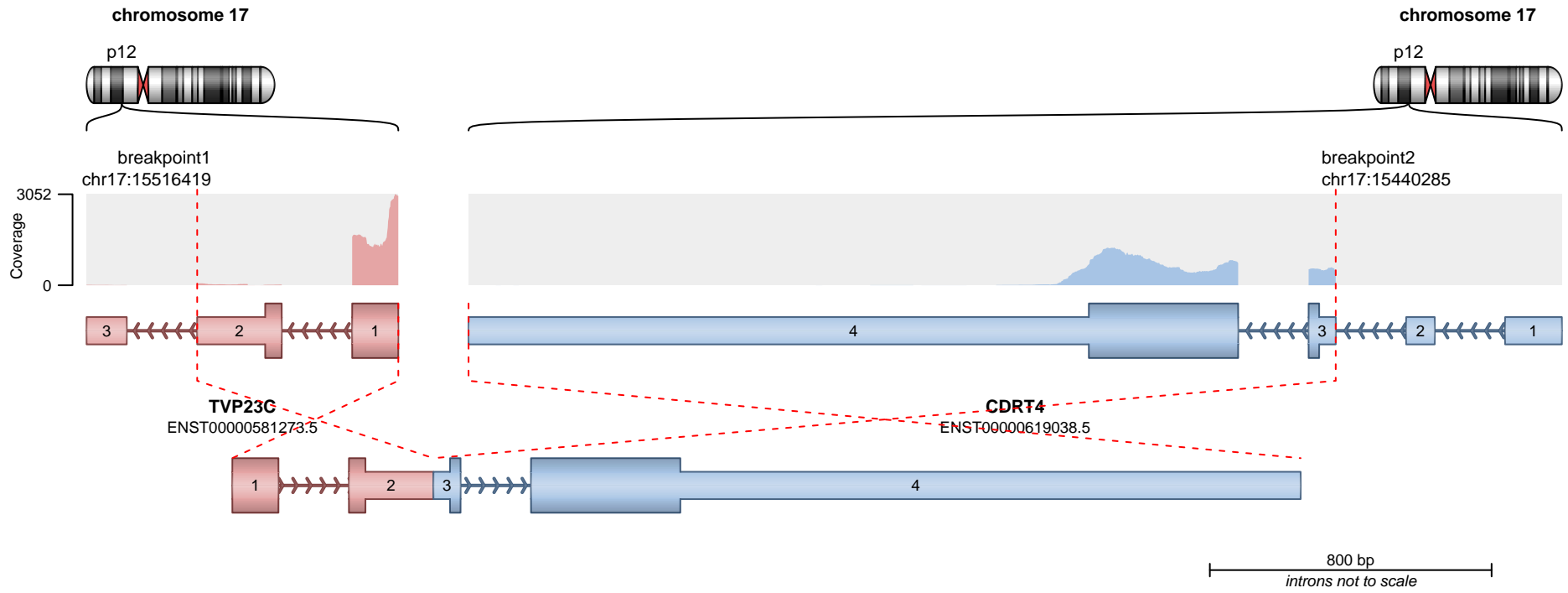
**RETAINED PROTEIN DOMAINS**  
reading frame unclear



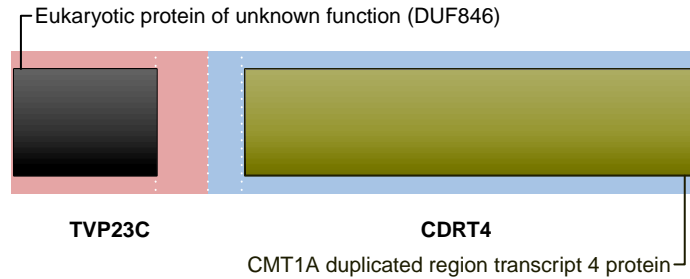
**SUPPORTING READ COUNT**

Split reads = 25  
Discordant mates = 0

— translocation — deletion  
— duplication — inversion



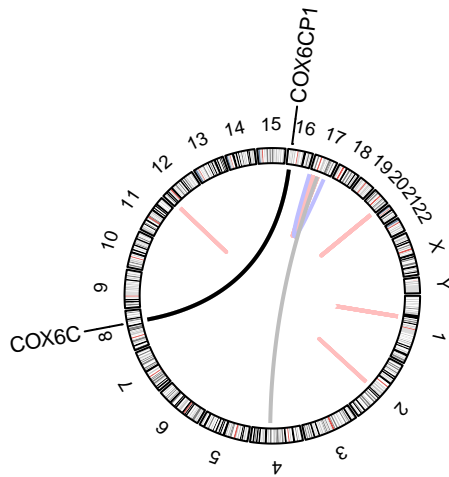
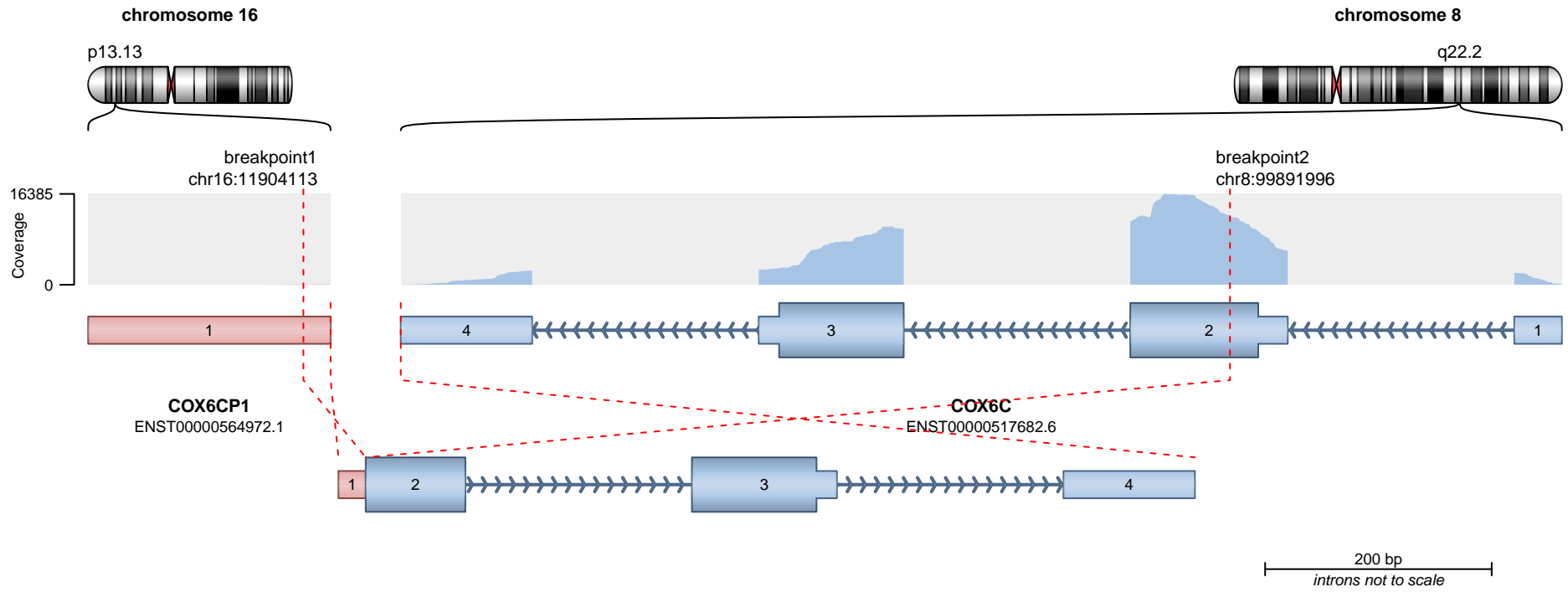
**RETAINED PROTEIN DOMAINS**  
reading frame unclear



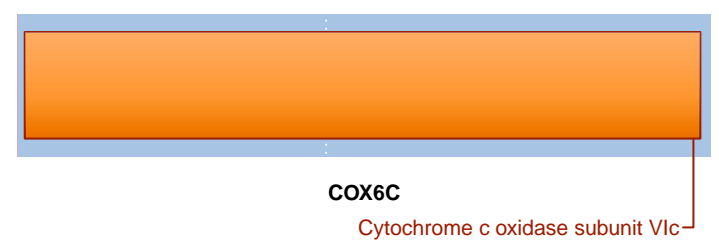
**SUPPORTING READ COUNT**

Split reads = 15  
Discordant mates = 0

- translocation
- duplication
- deletion
- inversion



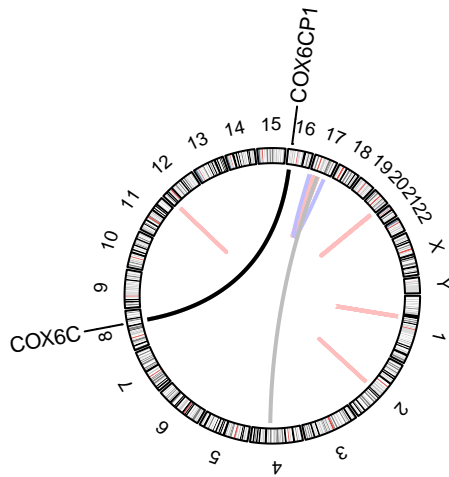
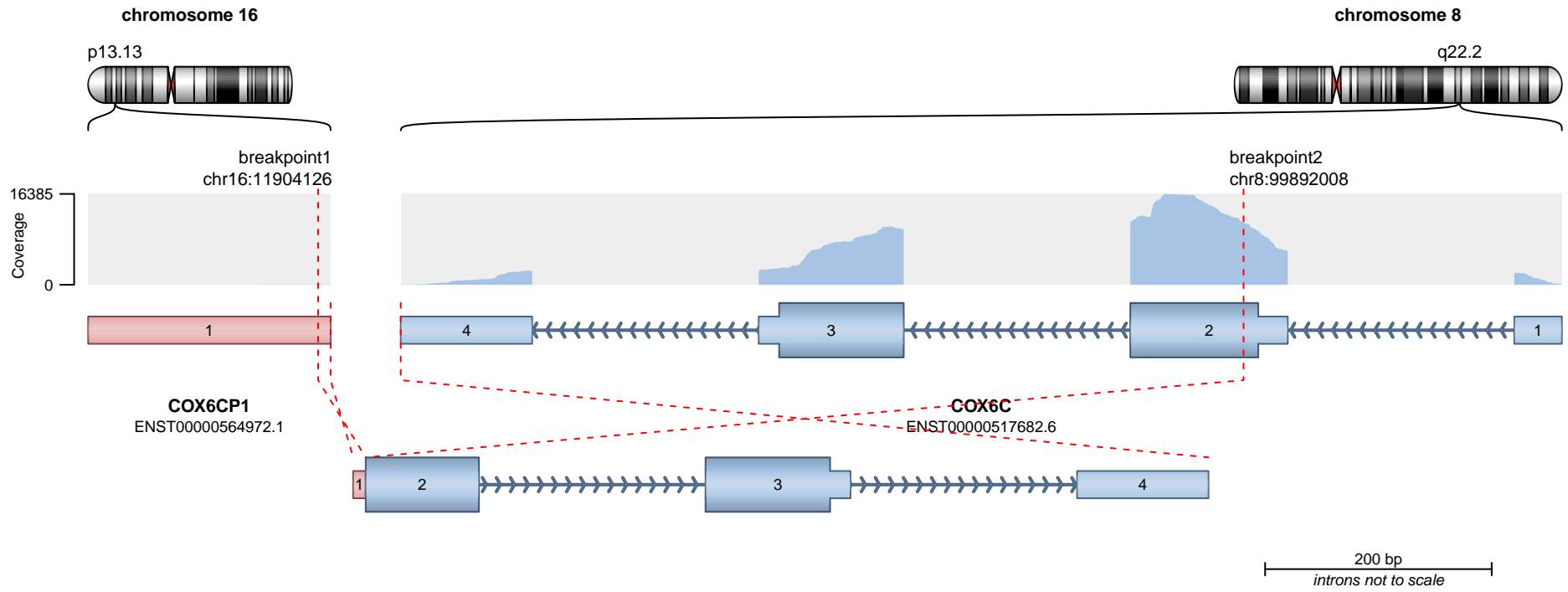
**RETAINED PROTEIN DOMAINS**  
reading frame unclear



**SUPPORTING READ COUNT**

Split reads = 78  
Discordant mates = 0

— translocation — deletion  
— duplication — inversion



**RETAINED PROTEIN DOMAINS**  
reading frame unclear

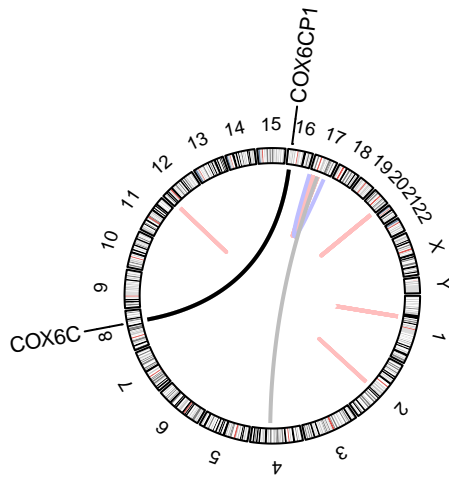
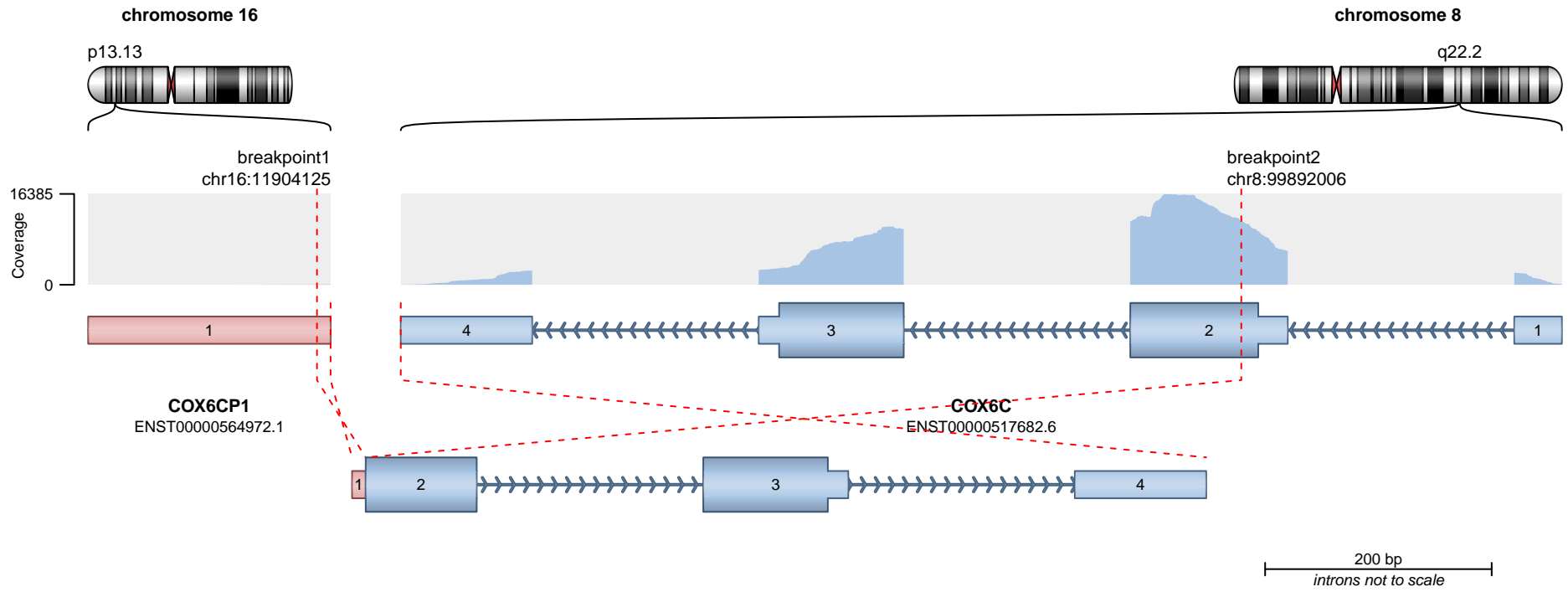


**COX6C**  
Cytochrome c oxidase subunit VIc

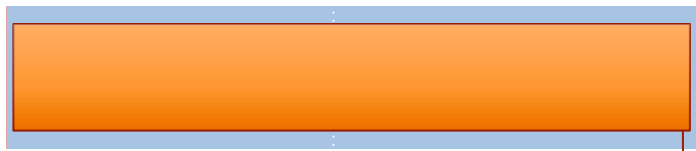
**SUPPORTING READ COUNT**

Split reads = 12  
Discordant mates = 0

- translocation
- duplication
- deletion
- inversion



**RETAINED PROTEIN DOMAINS**  
reading frame unclear

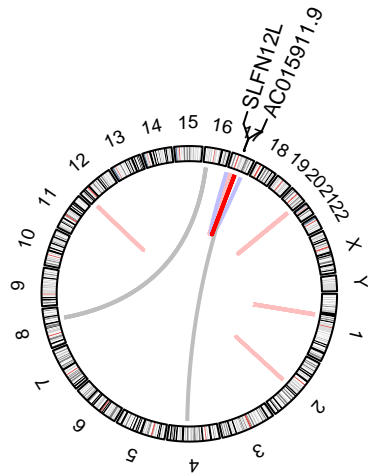
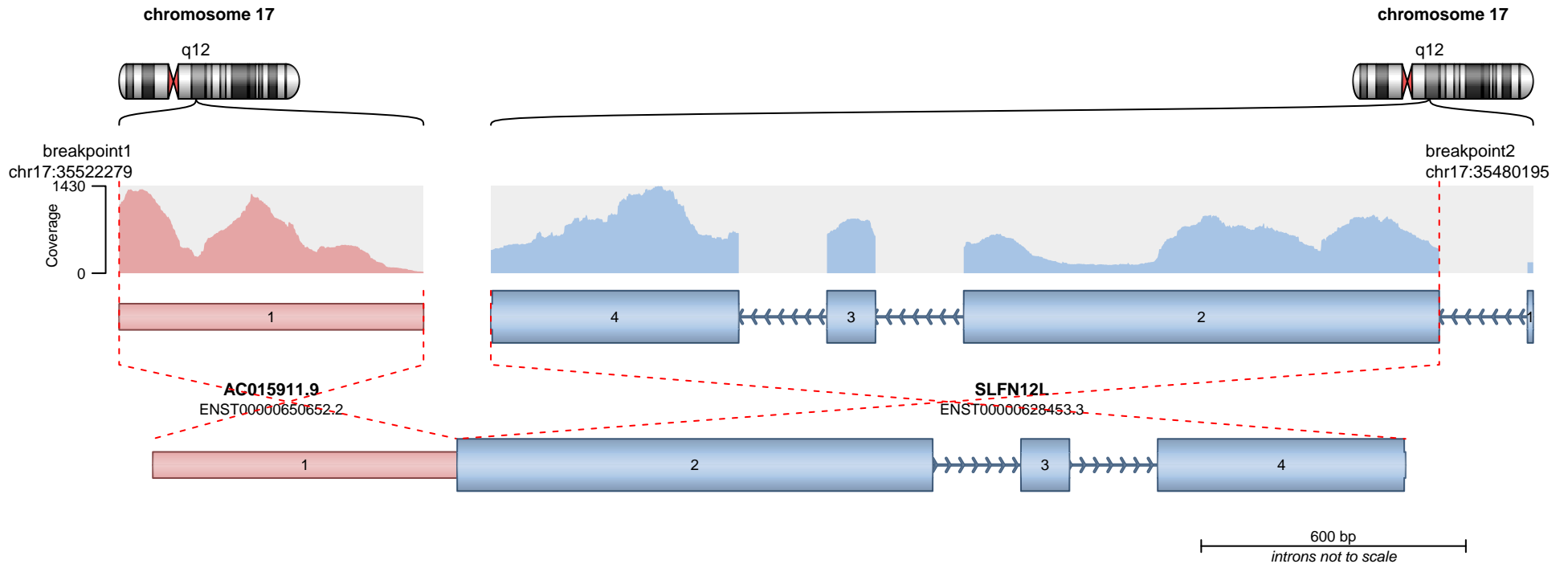


**COX6C**  
Cytochrome c oxidase subunit VIc

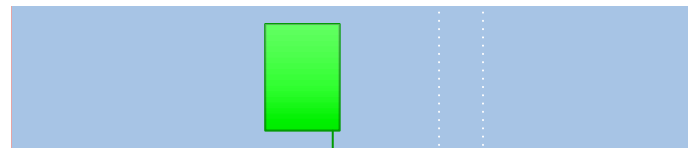
**SUPPORTING READ COUNT**

Split reads = 12  
Discordant mates = 0

— translocation    — deletion  
— duplication    — inversion



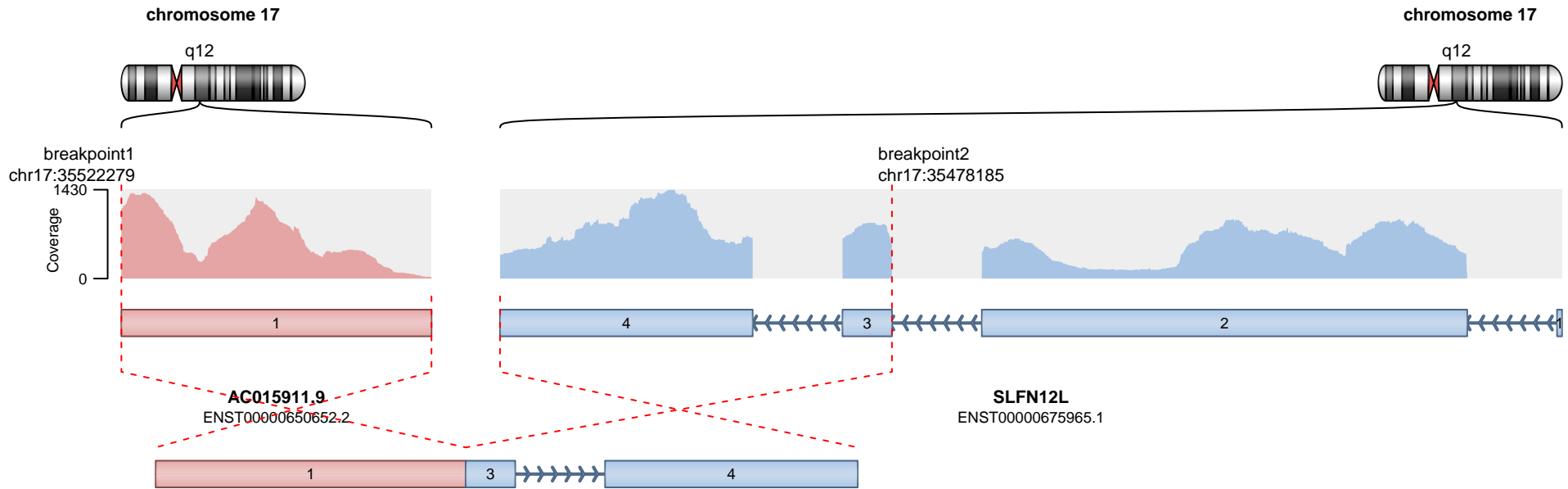
RETAINED PROTEIN DOMAINS  
reading frame unclear



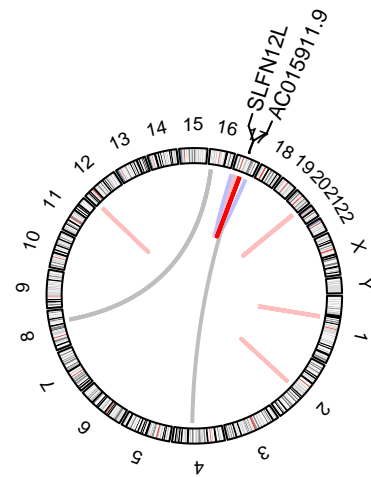
SUPPORTING READ COUNT

Split reads = 63  
Discordant mates = 1

— translocation — deletion  
— duplication — inversion



600 bp  
introns not to scale

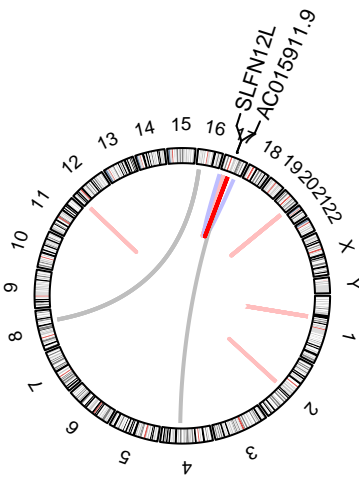
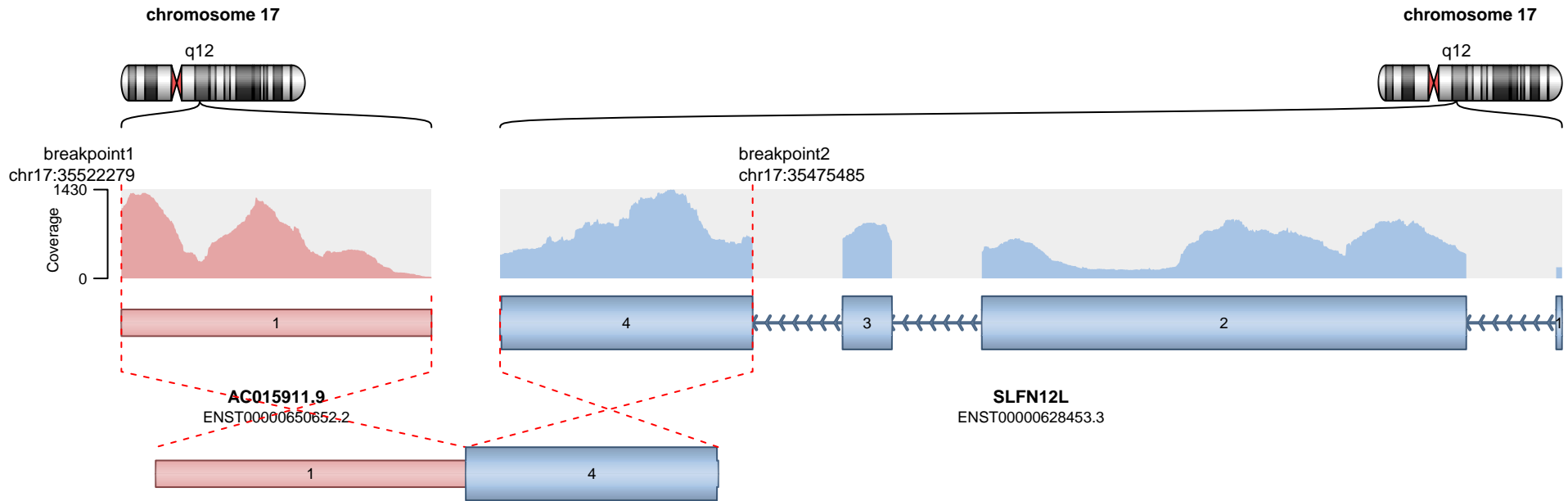


— translocation — deletion  
— duplication — inversion

Genes are not protein-coding.

**SUPPORTING READ COUNT**

Split reads = 32  
Discordant mates = 1

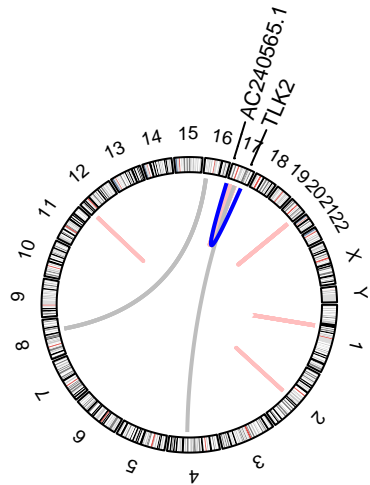
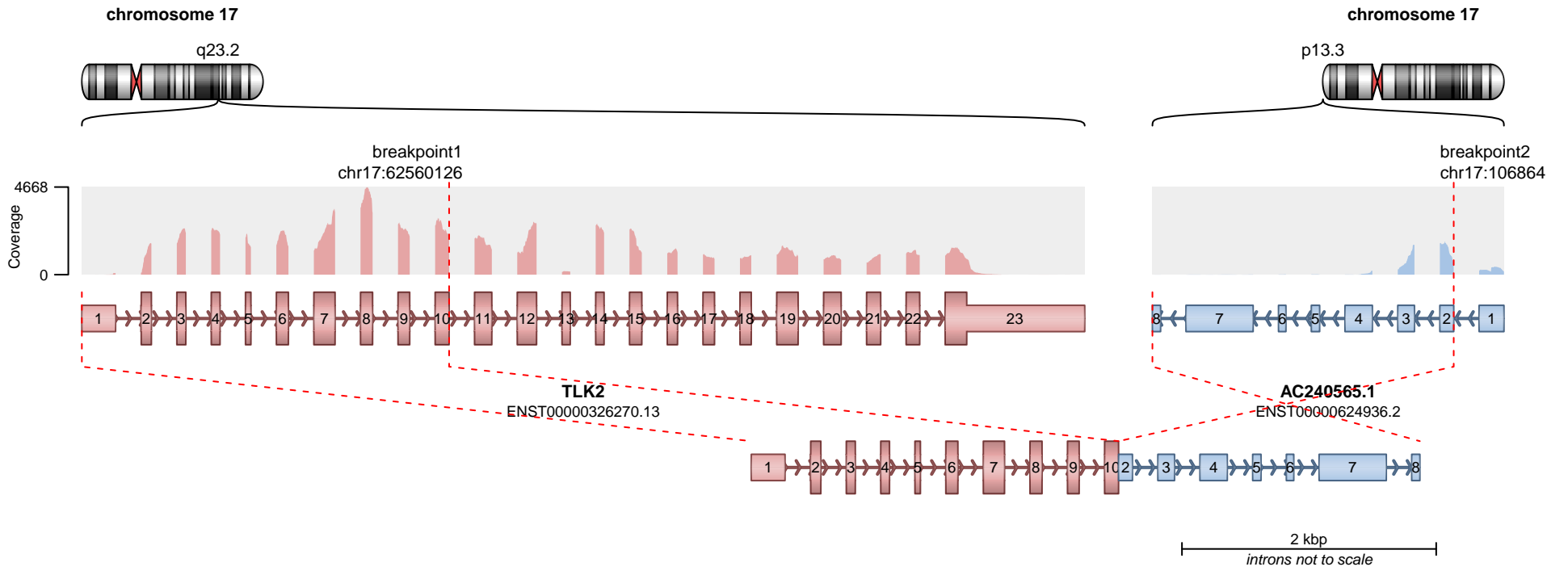


— translocation — deletion  
— duplication — inversion

No protein domains retained in fusion.

**SUPPORTING READ COUNT**

Split reads = 4  
Discordant mates = 0

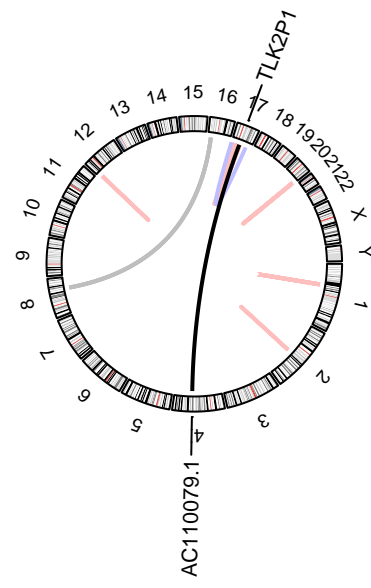
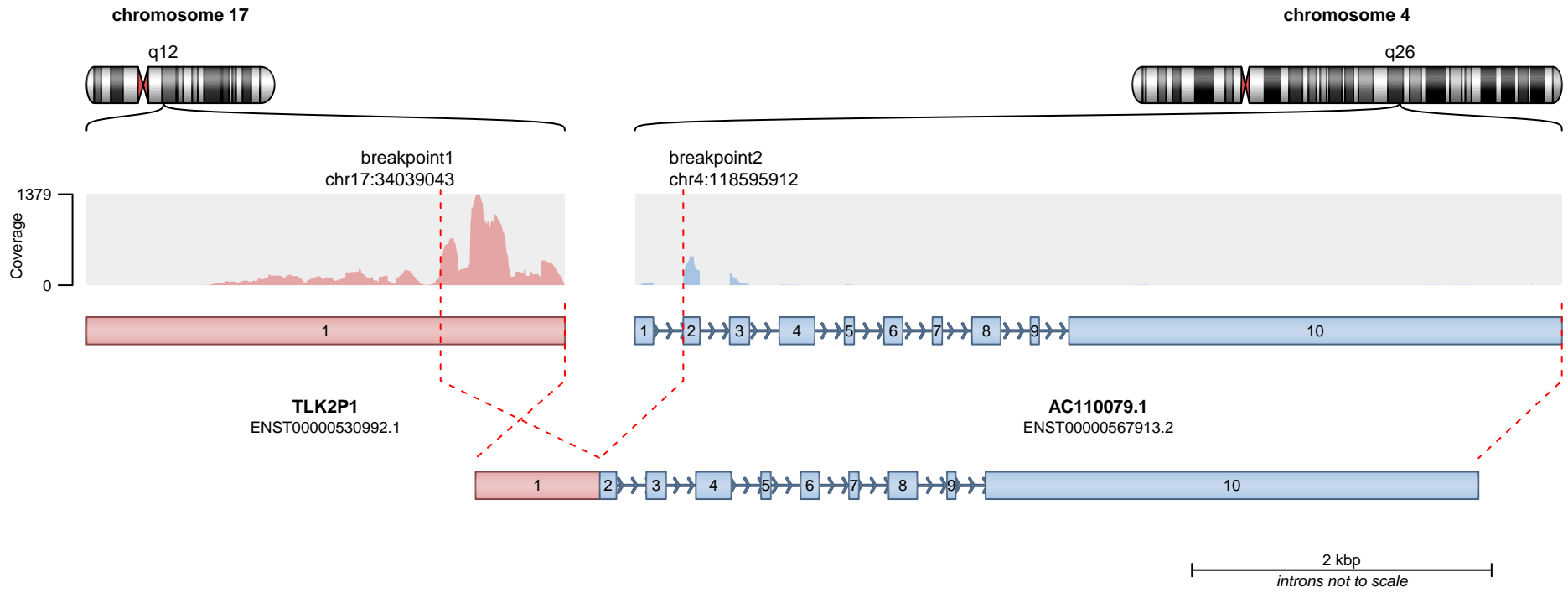


No protein domains retained in fusion.

**SUPPORTING READ COUNT**

Split reads = 39  
Discordant mates = 0

— translocation — deletion  
— duplication — inversion

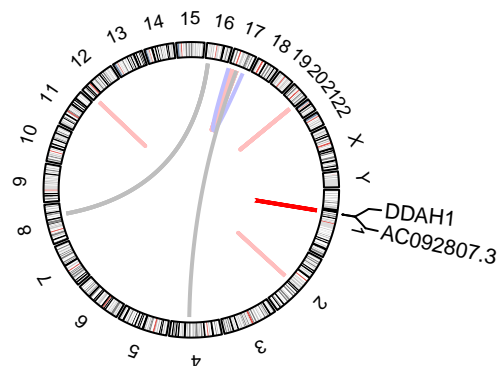
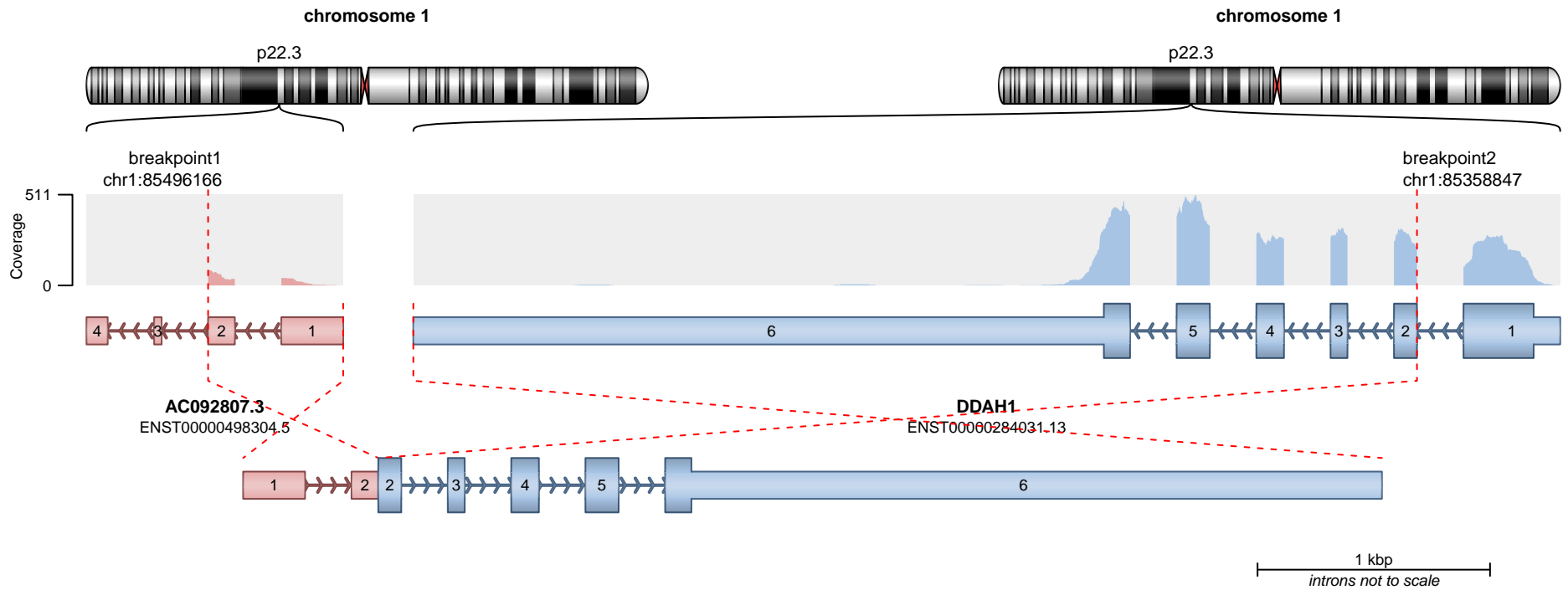


— translocation    — deletion  
 — duplication    — inversion

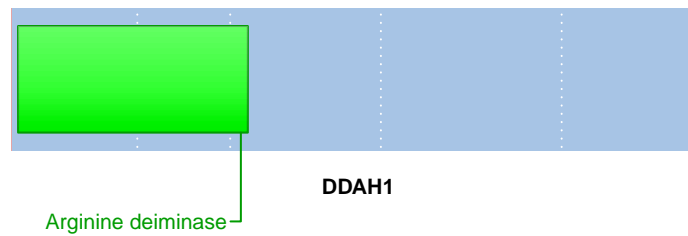
Genes are not protein-coding.

**SUPPORTING READ COUNT**

Split reads = 39  
Discordant mates = 0



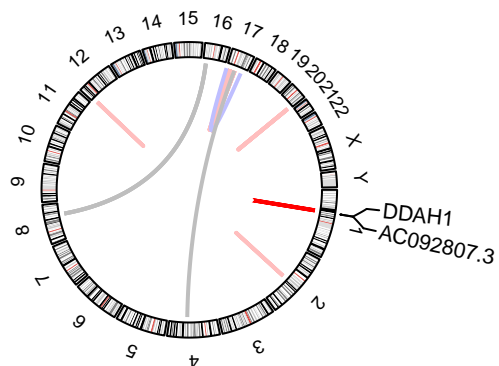
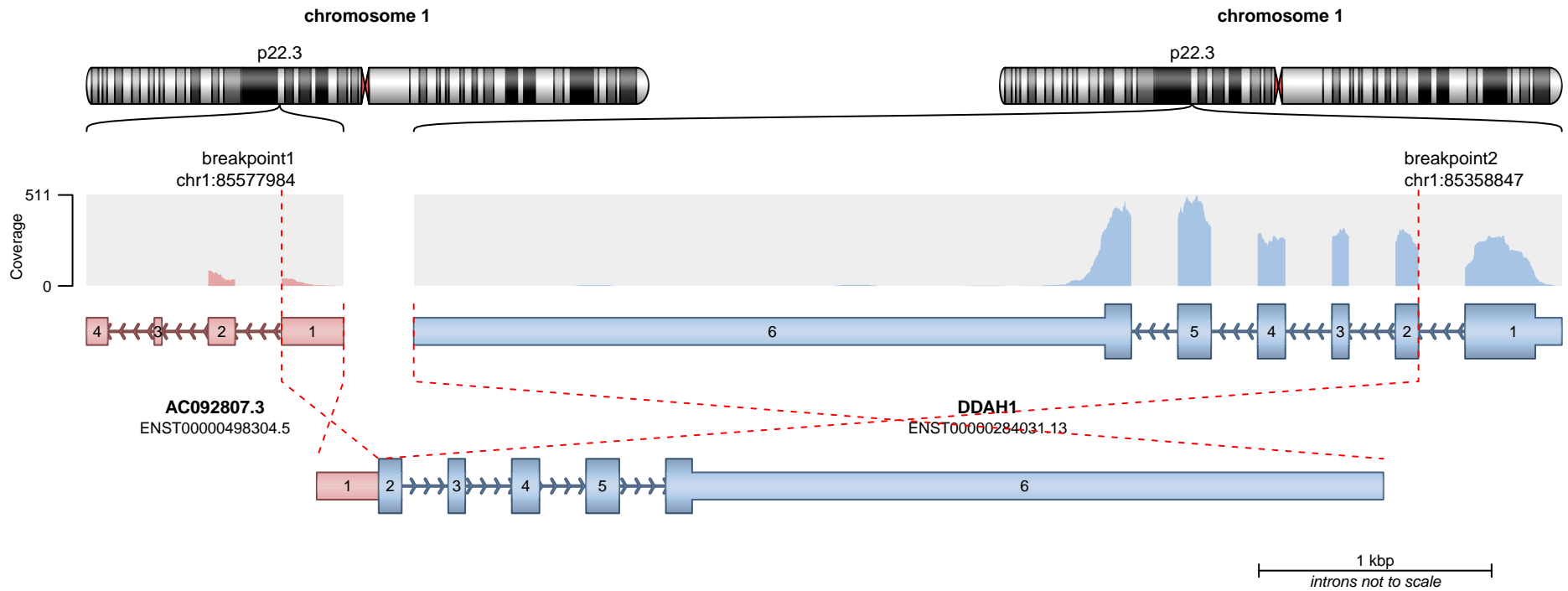
**RETAINED PROTEIN DOMAINS**  
reading frame unclear



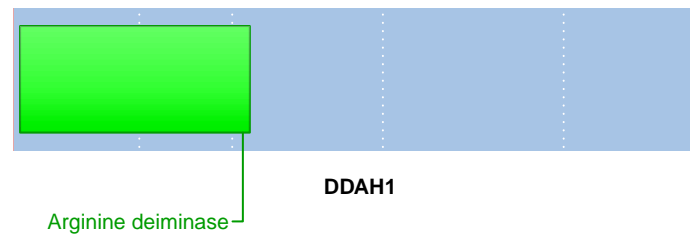
**SUPPORTING READ COUNT**

Split reads = 30  
Discordant mates = 0

- translocation
- duplication
- deletion
- inversion



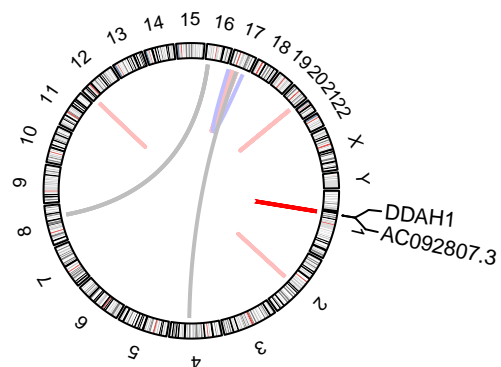
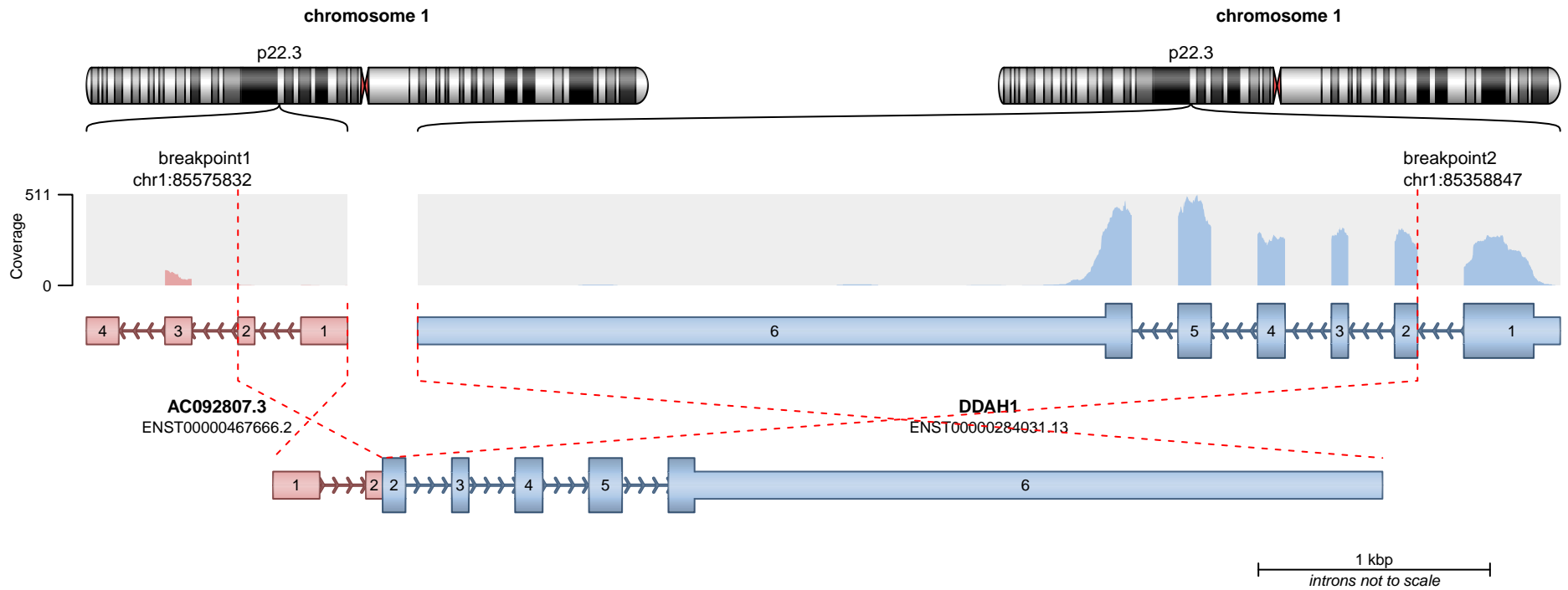
**RETAINED PROTEIN DOMAINS**  
reading frame unclear



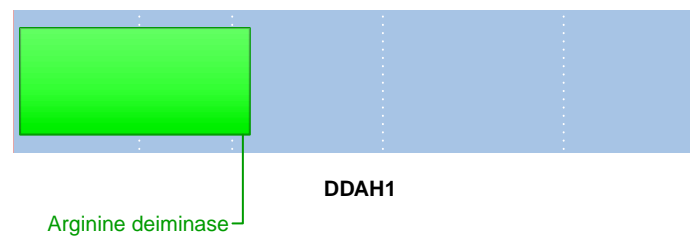
**SUPPORTING READ COUNT**

Split reads = 4  
Discordant mates = 0

- translocation
- duplication
- deletion
- inversion



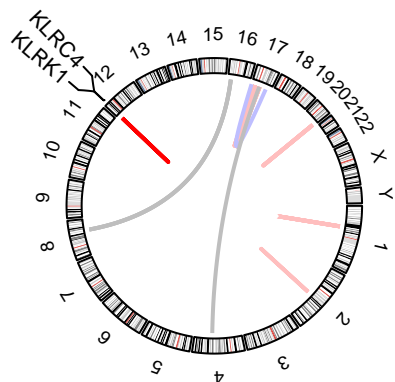
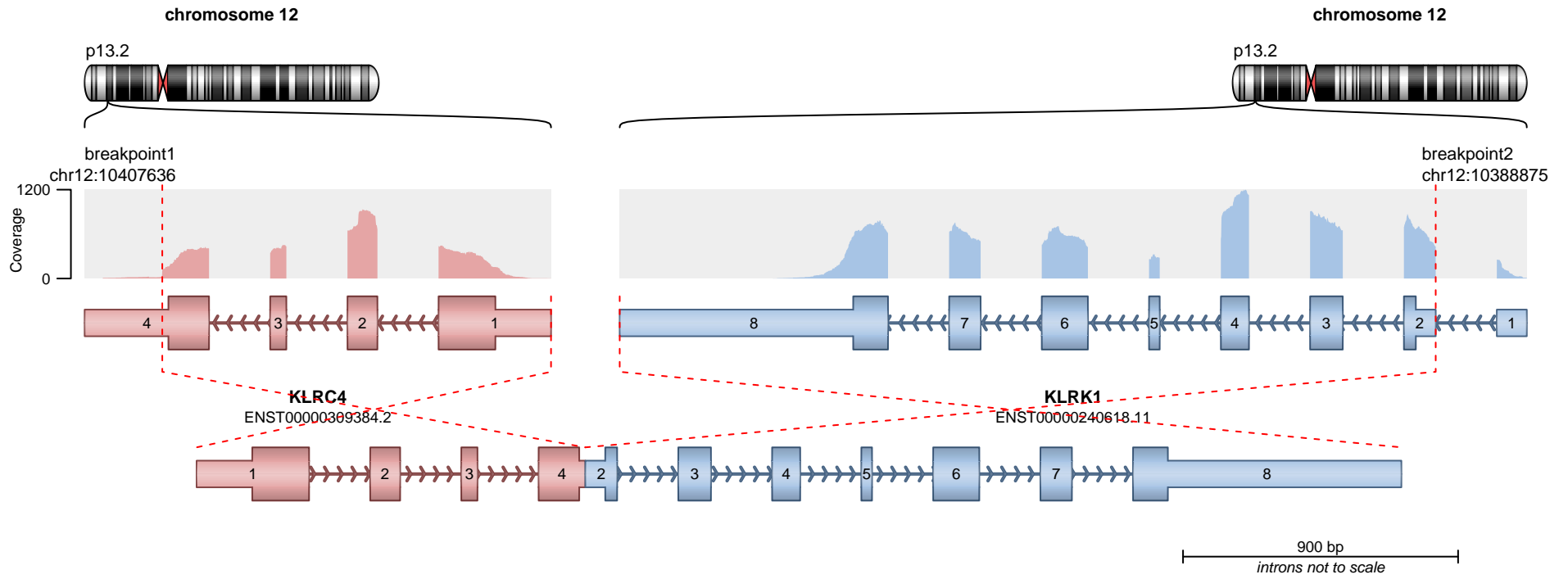
**RETAINED PROTEIN DOMAINS**  
reading frame unclear



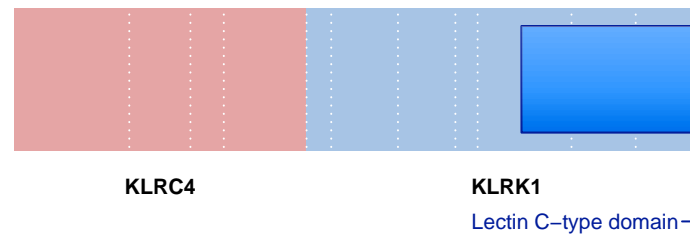
**SUPPORTING READ COUNT**

Split reads = 1  
Discordant mates = 0

- translocation
- duplication
- deletion
- inversion



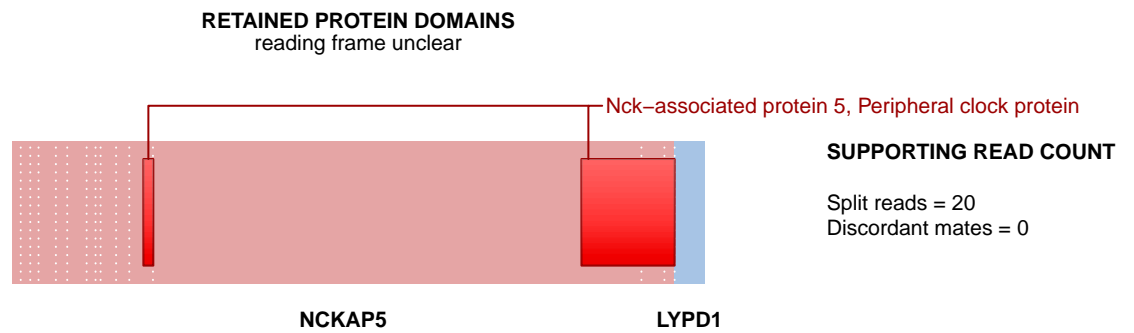
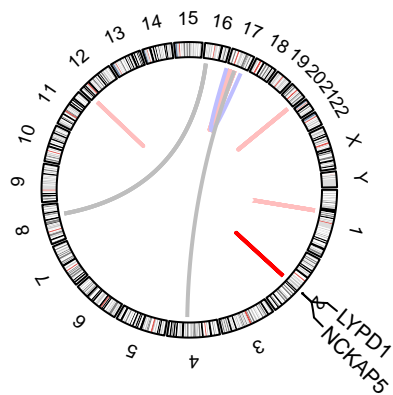
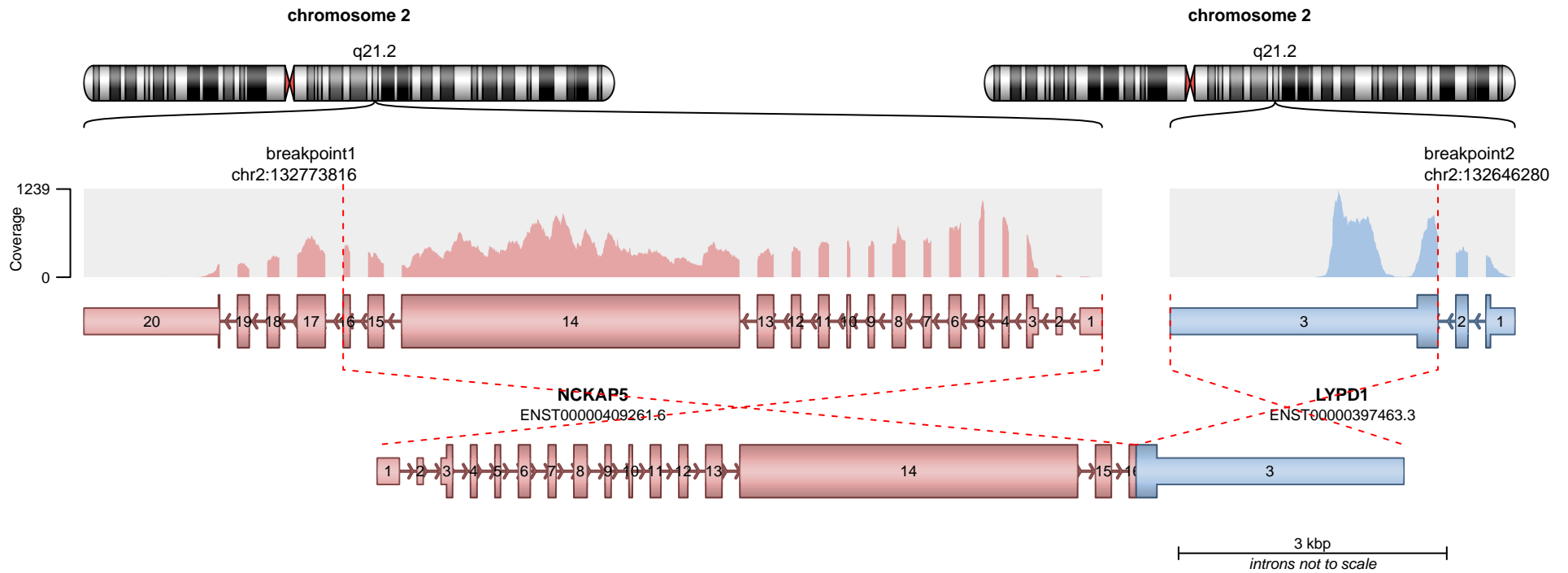
**RETAINED PROTEIN DOMAINS**  
reading frame unclear



**SUPPORTING READ COUNT**

Split reads = 28  
Discordant mates = 0

— translocation — deletion  
— duplication — inversion



— translocation — deletion  
— duplication — inversion