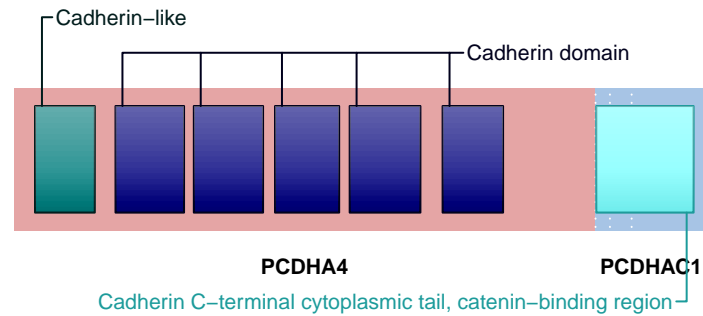


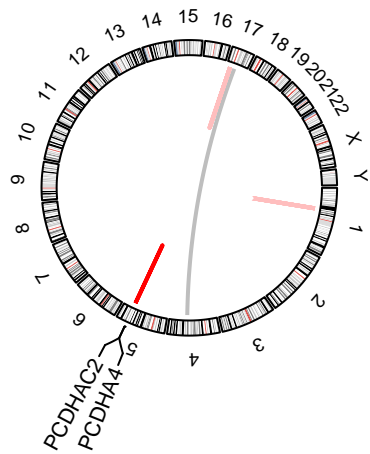
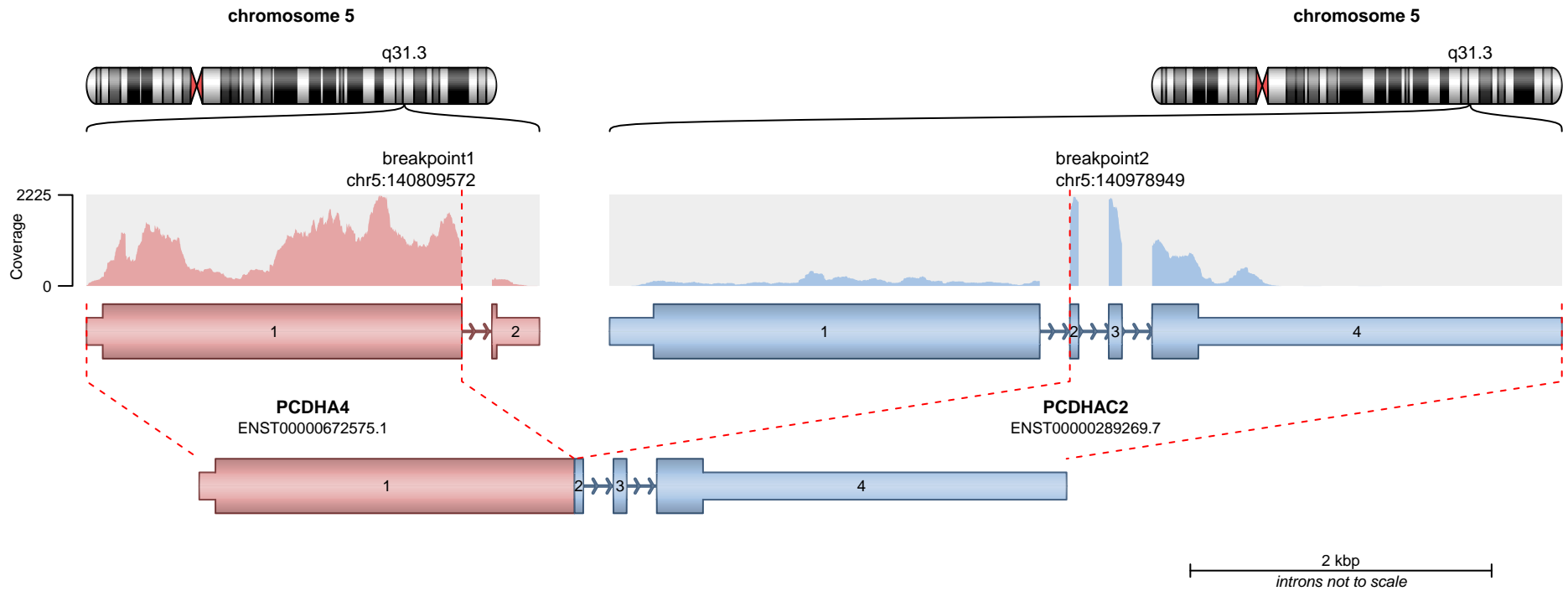
**RETAINED PROTEIN DOMAINS**  
reading frame unclear



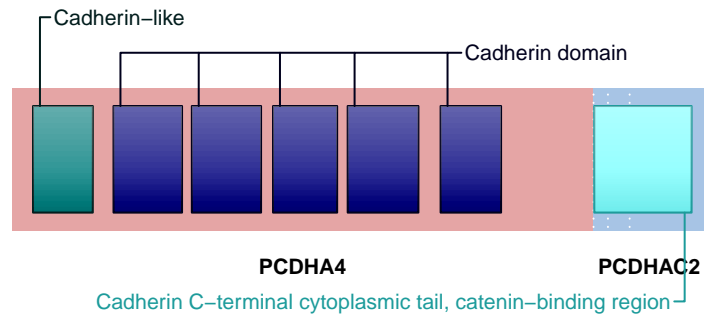
**SUPPORTING READ COUNT**

Split reads = 175  
Discordant mates = 0

— translocation — deletion  
— duplication — inversion



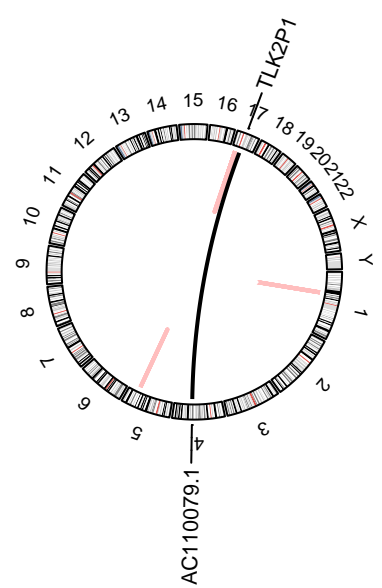
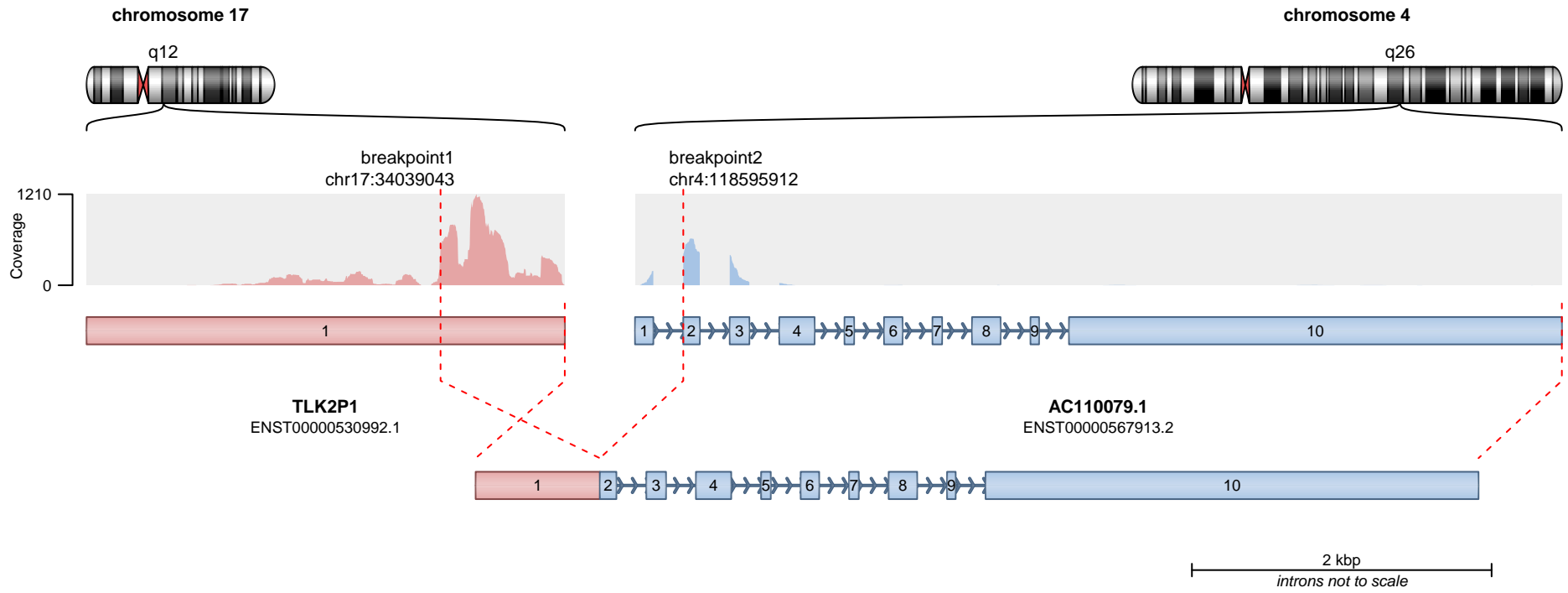
**RETAINED PROTEIN DOMAINS**  
reading frame unclear



**SUPPORTING READ COUNT**

Split reads = 175  
Discordant mates = 0

— translocation — deletion  
— duplication — inversion

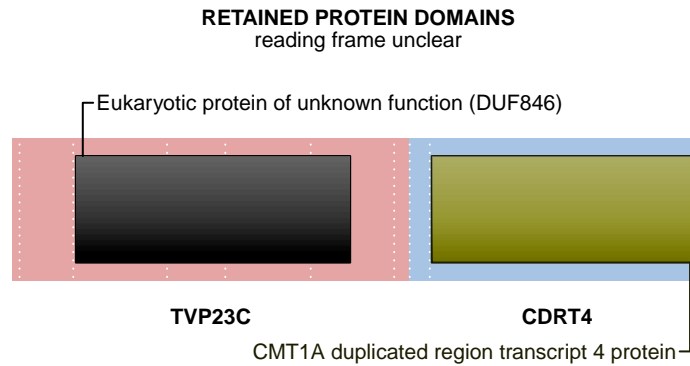
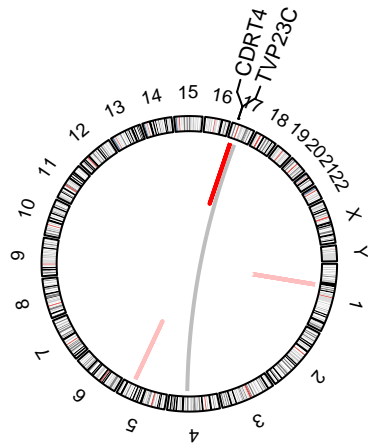
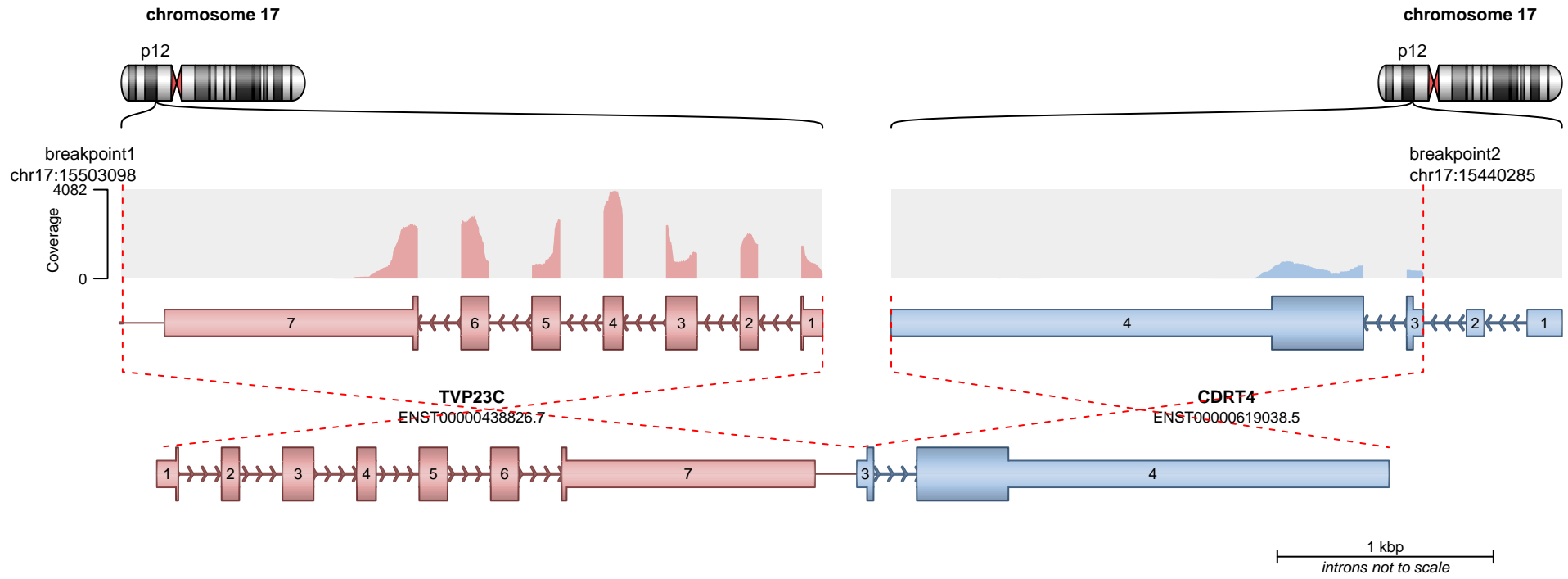


— translocation    — deletion  
 — duplication    — inversion

Genes are not protein-coding.

**SUPPORTING READ COUNT**

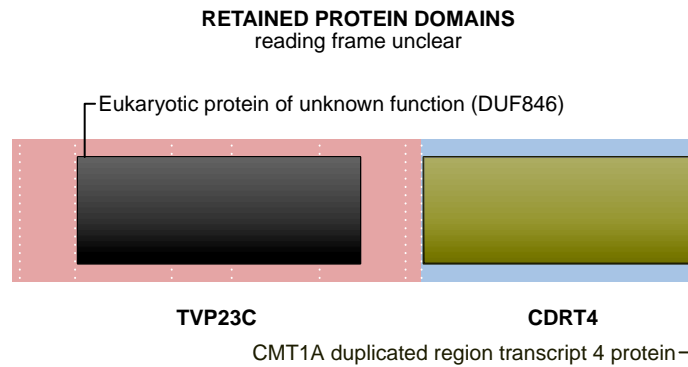
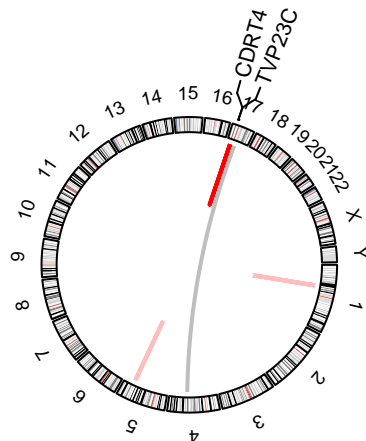
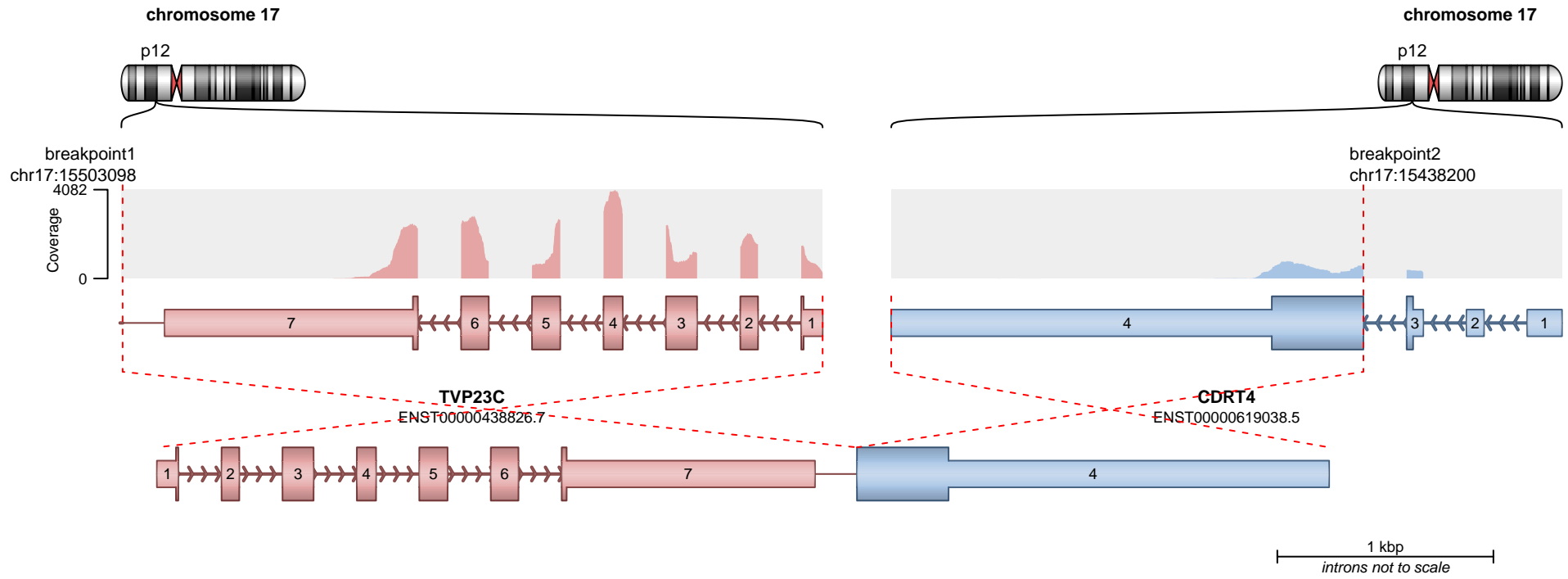
Split reads = 59  
 Discordant mates = 0



**SUPPORTING READ COUNT**

Split reads = 33  
Discordant mates = 0

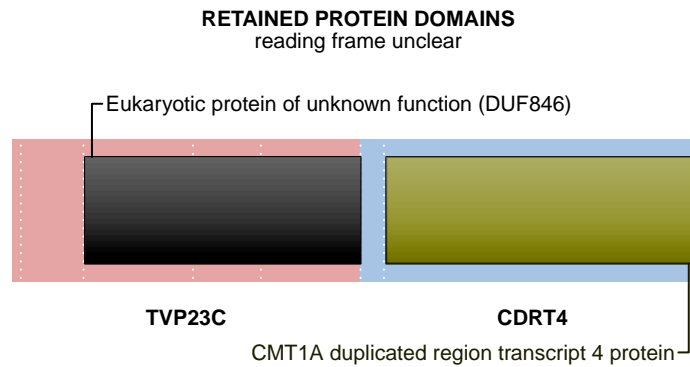
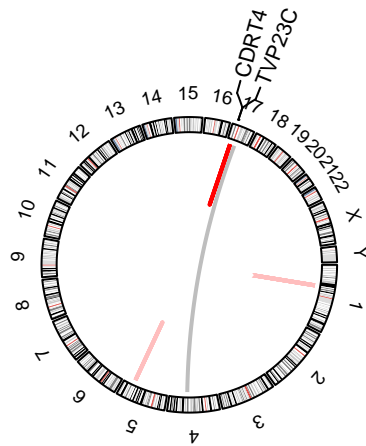
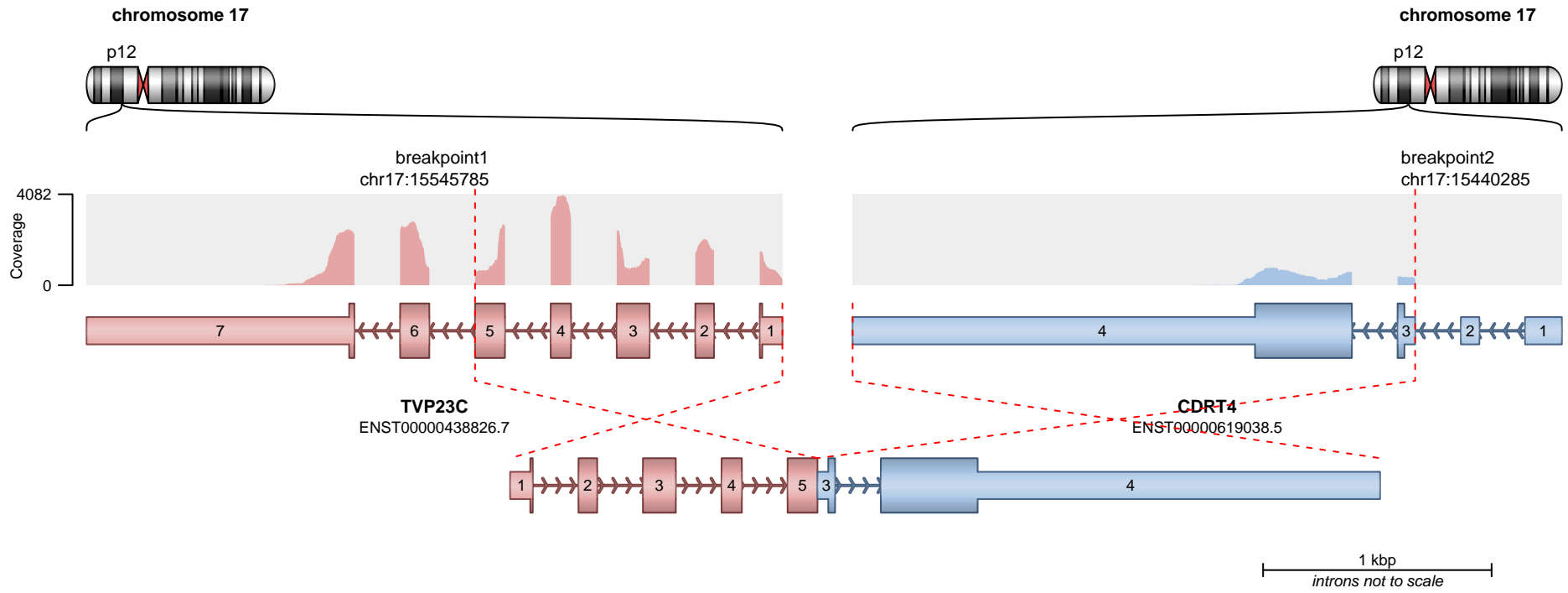
— translocation — deletion  
— duplication — inversion



**SUPPORTING READ COUNT**

Split reads = 14  
Discordant mates = 0

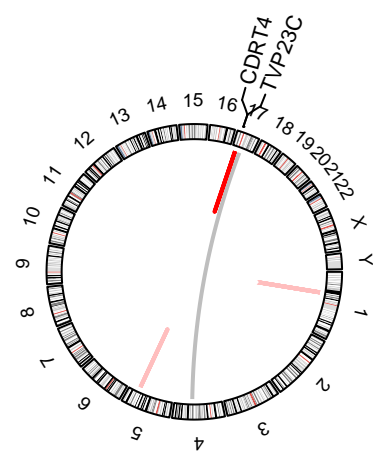
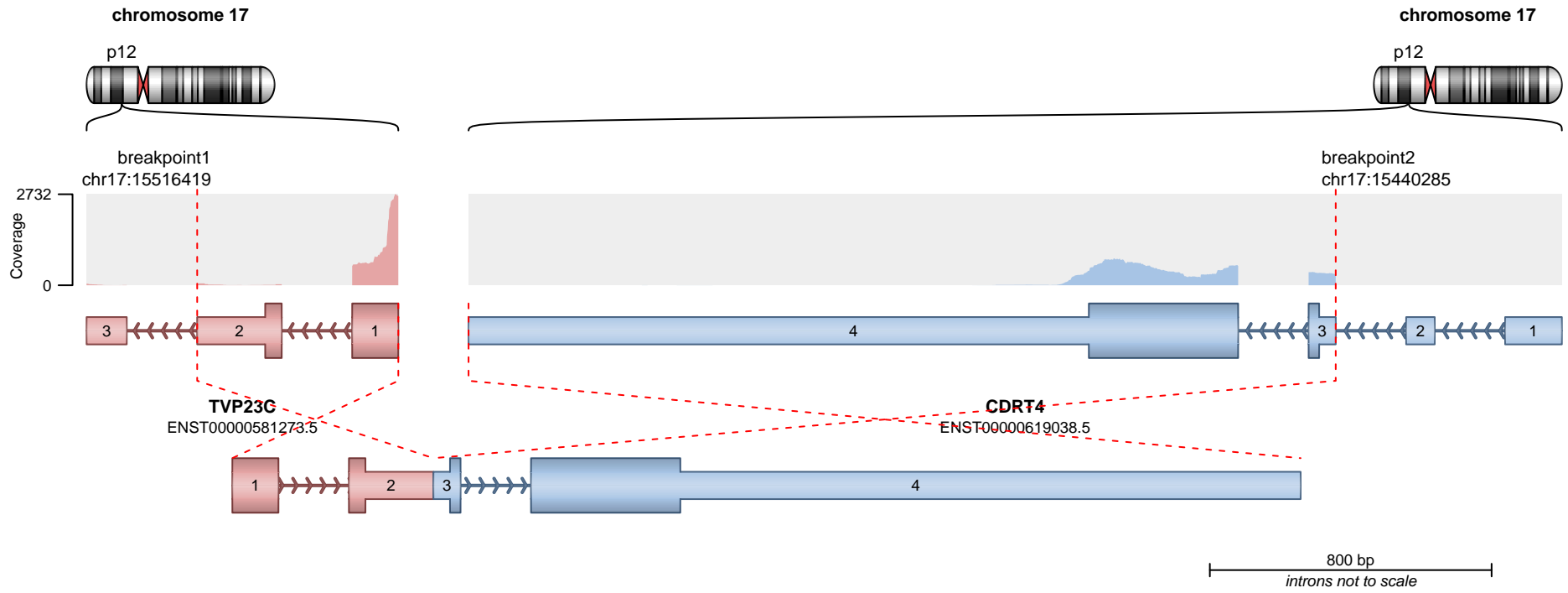
- translocation
- duplication
- deletion
- inversion



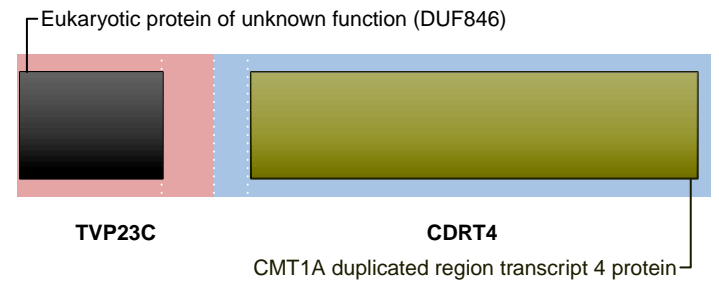
**SUPPORTING READ COUNT**

Split reads = 12  
Discordant mates = 0

- translocation
- duplication
- deletion
- inversion



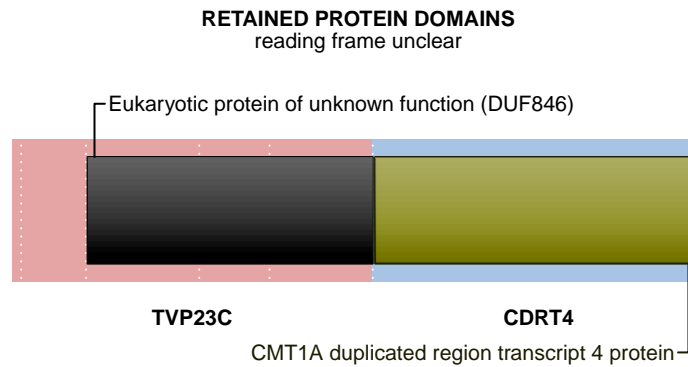
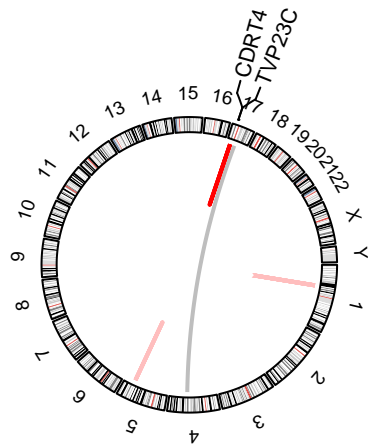
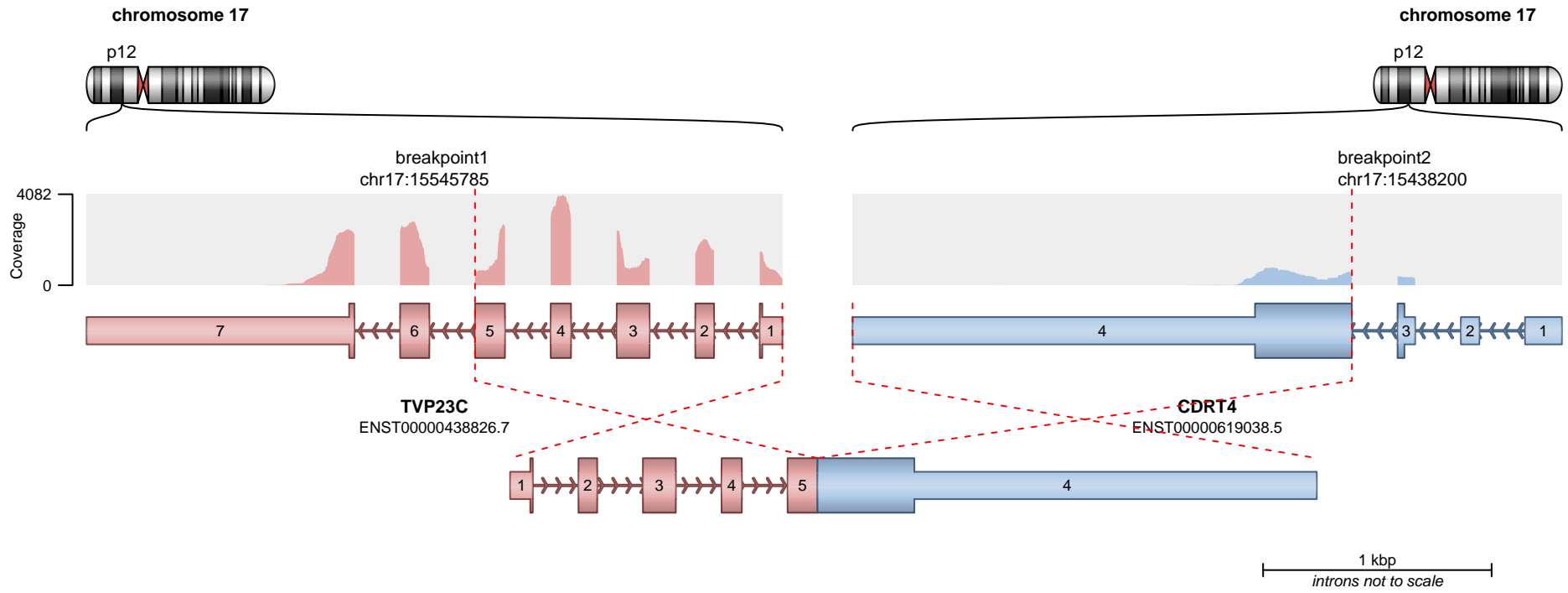
**RETAINED PROTEIN DOMAINS**  
reading frame unclear



**SUPPORTING READ COUNT**

Split reads = 10  
Discordant mates = 0

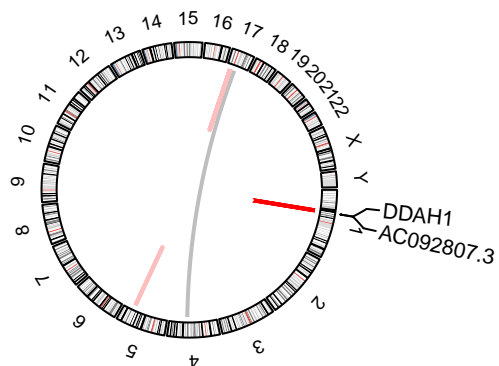
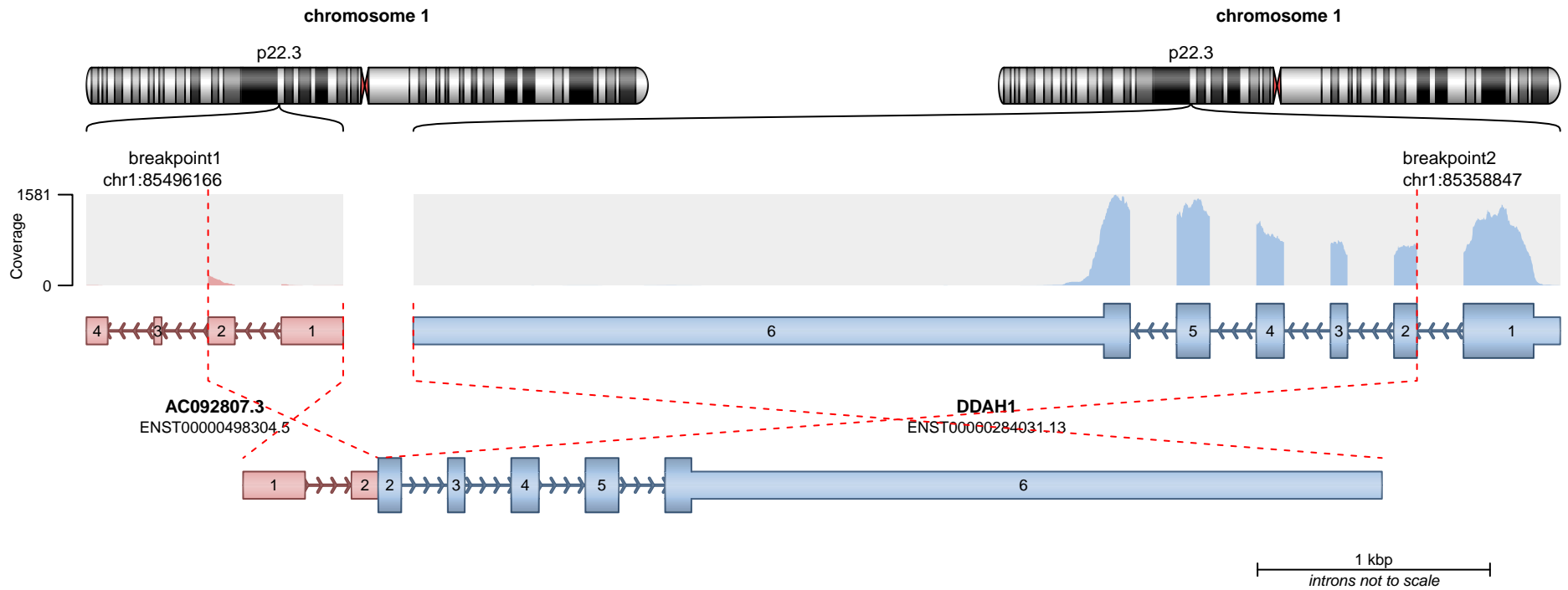
- translocation
- duplication
- deletion
- inversion



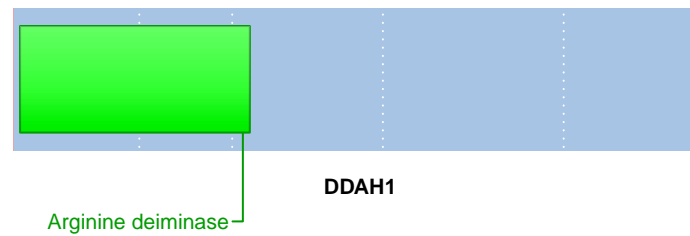
**SUPPORTING READ COUNT**

Split reads = 5  
Discordant mates = 0

- translocation
- duplication
- deletion
- inversion



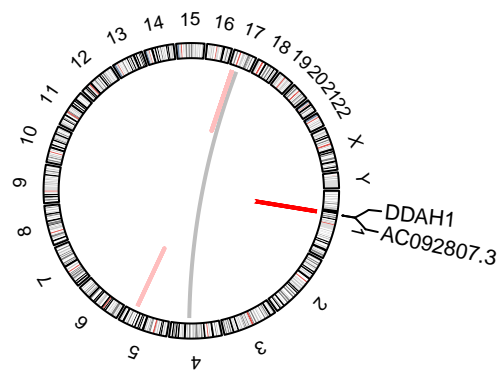
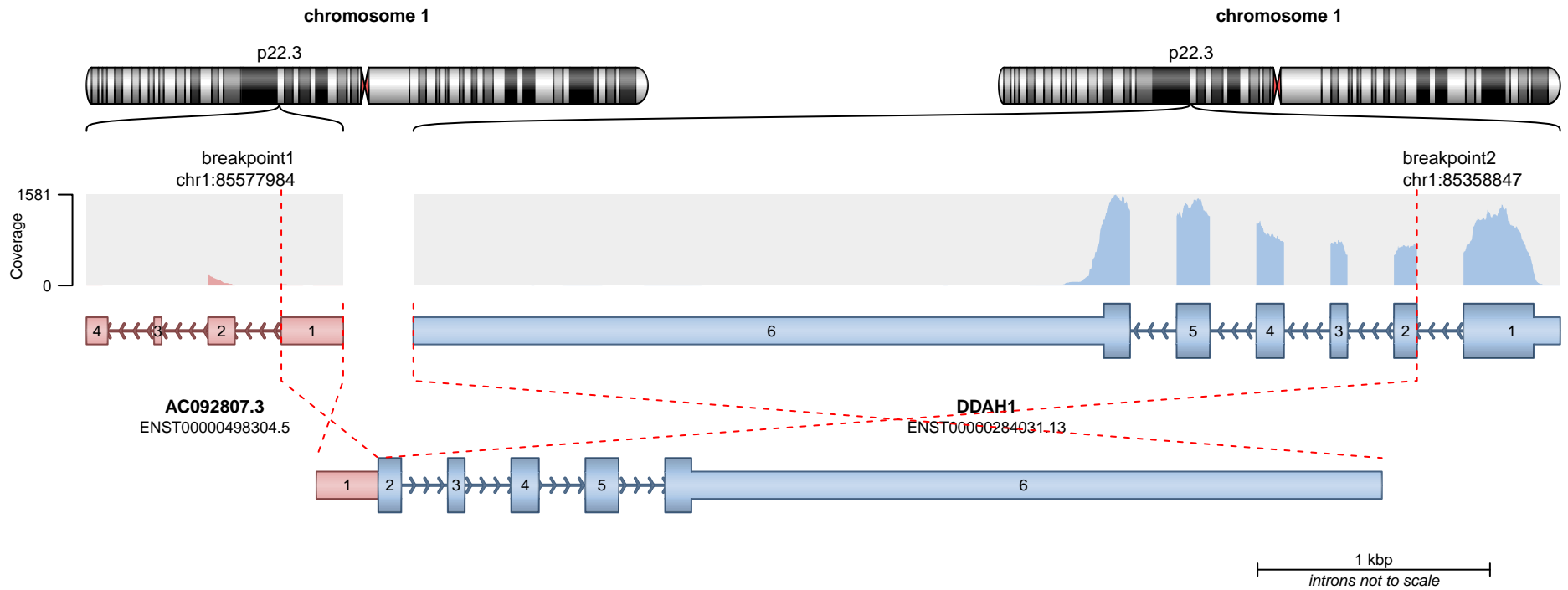
**RETAINED PROTEIN DOMAINS**  
reading frame unclear



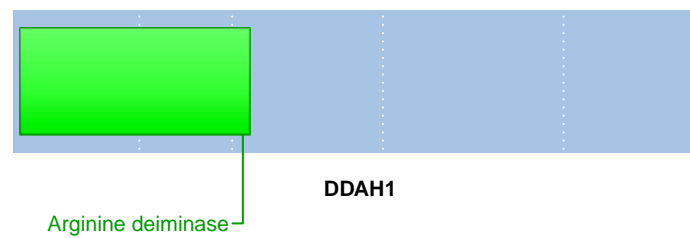
**SUPPORTING READ COUNT**

Split reads = 17  
Discordant mates = 0

- translocation
- duplication
- deletion
- inversion



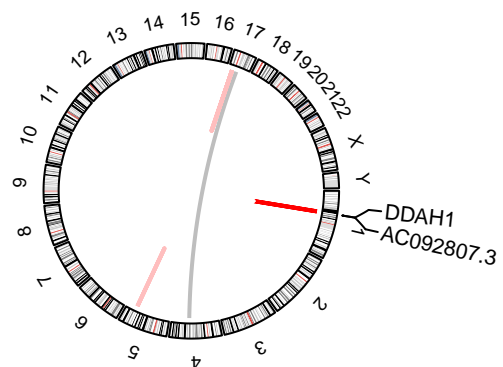
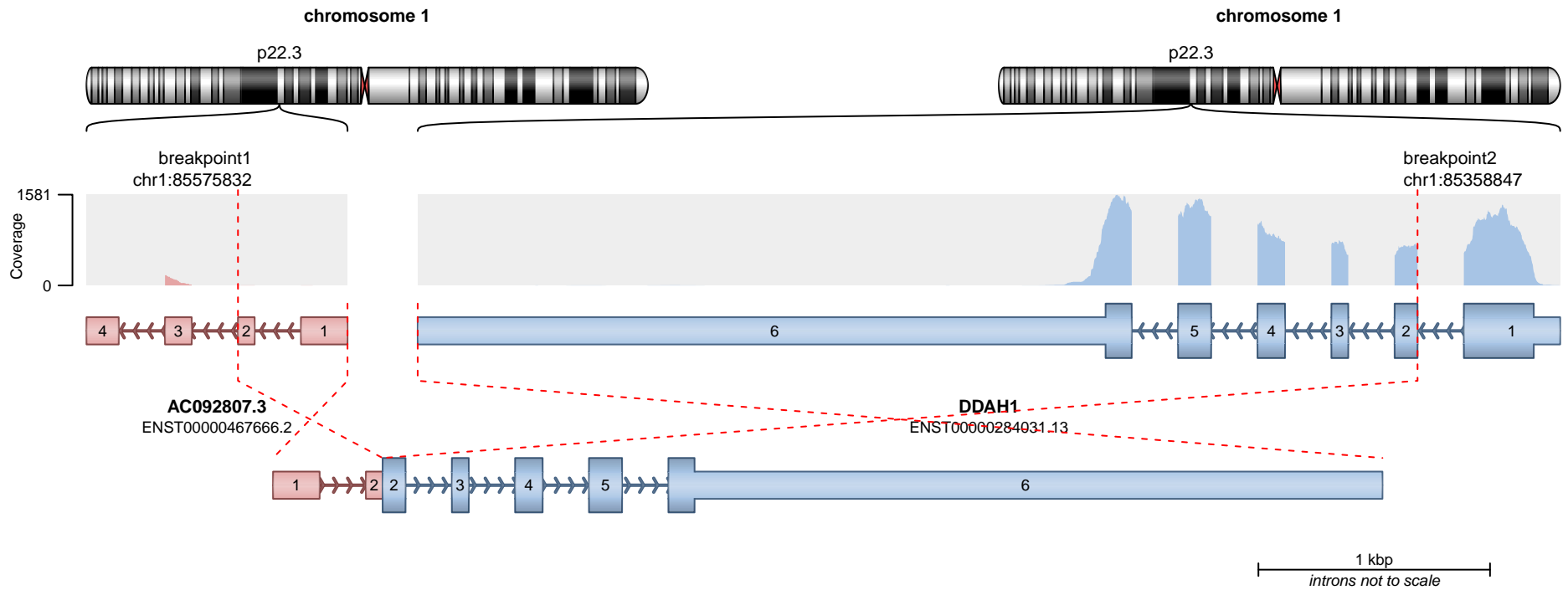
**RETAINED PROTEIN DOMAINS**  
reading frame unclear



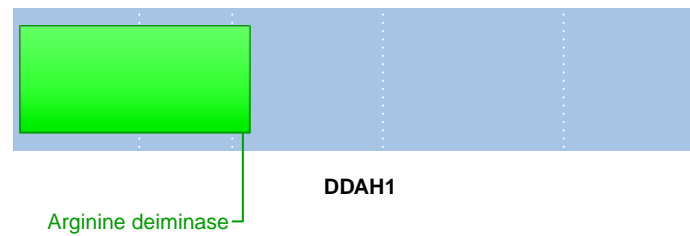
**SUPPORTING READ COUNT**

Split reads = 4  
Discordant mates = 0

- translocation
- duplication
- deletion
- inversion



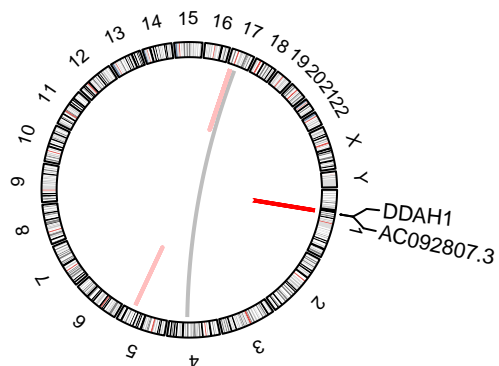
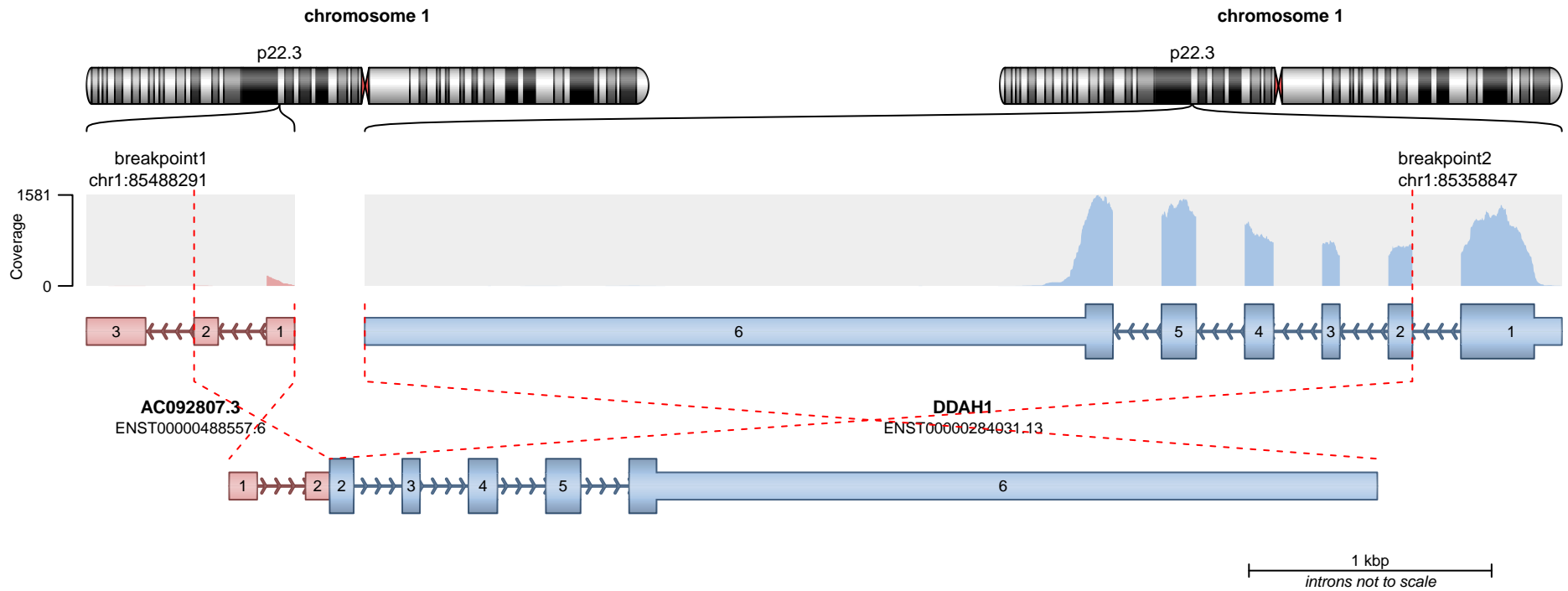
**RETAINED PROTEIN DOMAINS**  
reading frame unclear



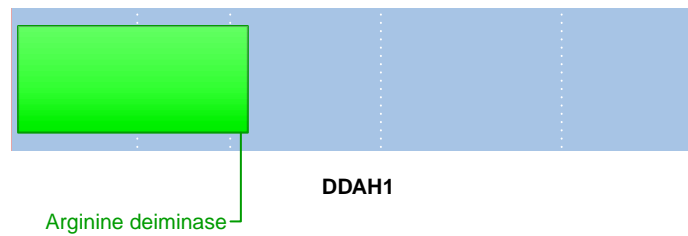
**SUPPORTING READ COUNT**

Split reads = 1  
Discordant mates = 0

- translocation
- duplication
- deletion
- inversion



**RETAINED PROTEIN DOMAINS**  
reading frame unclear



**SUPPORTING READ COUNT**

Split reads = 1  
Discordant mates = 0

- translocation
- duplication
- deletion
- inversion