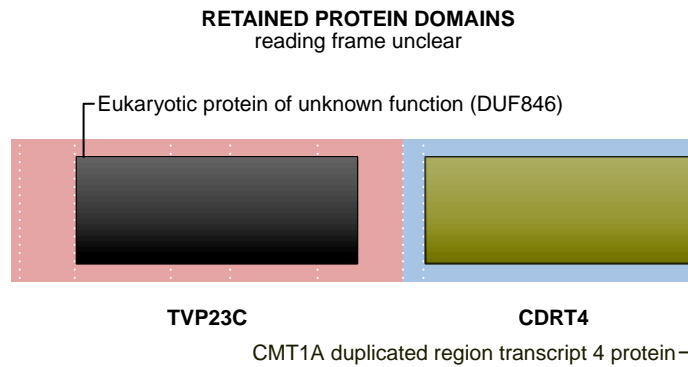
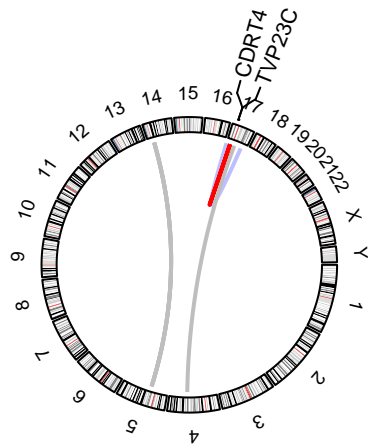
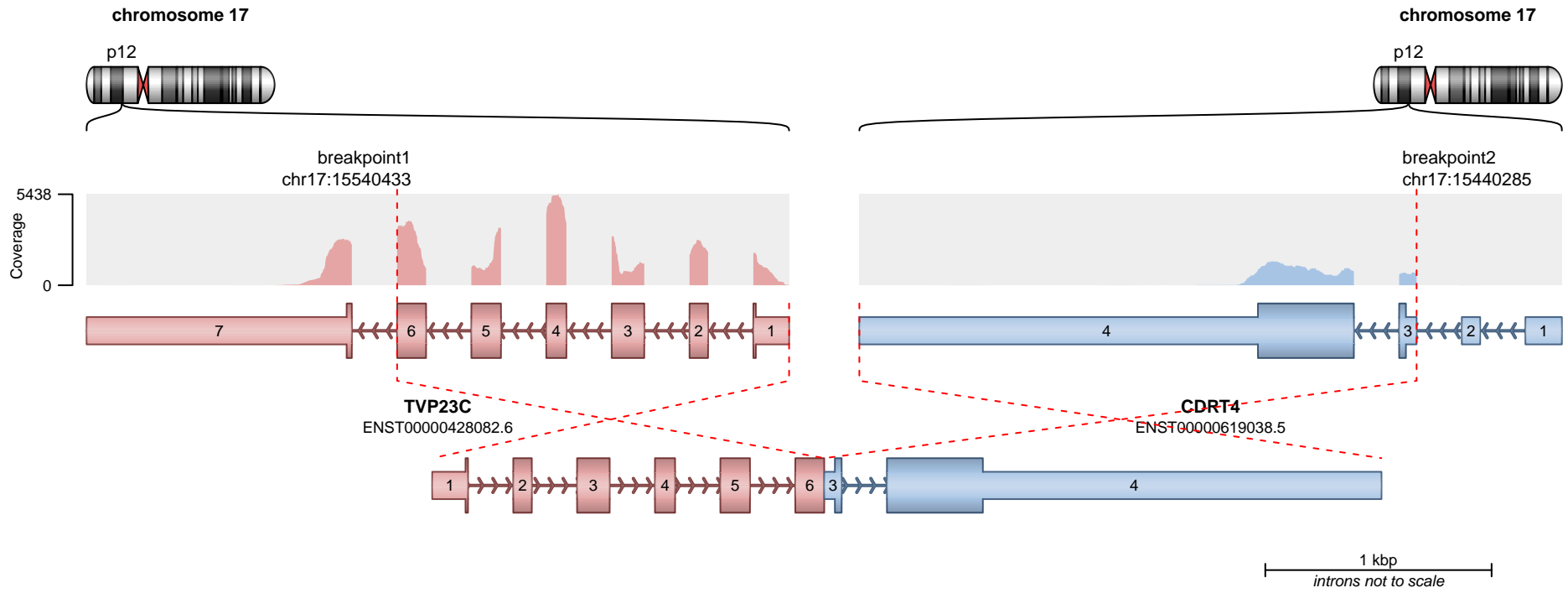


SUPPORTING READ COUNT

Split reads = 71
Discordant mates = 0

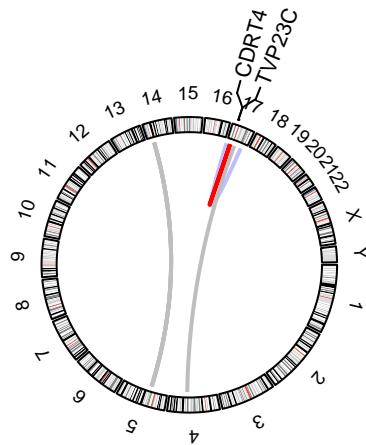
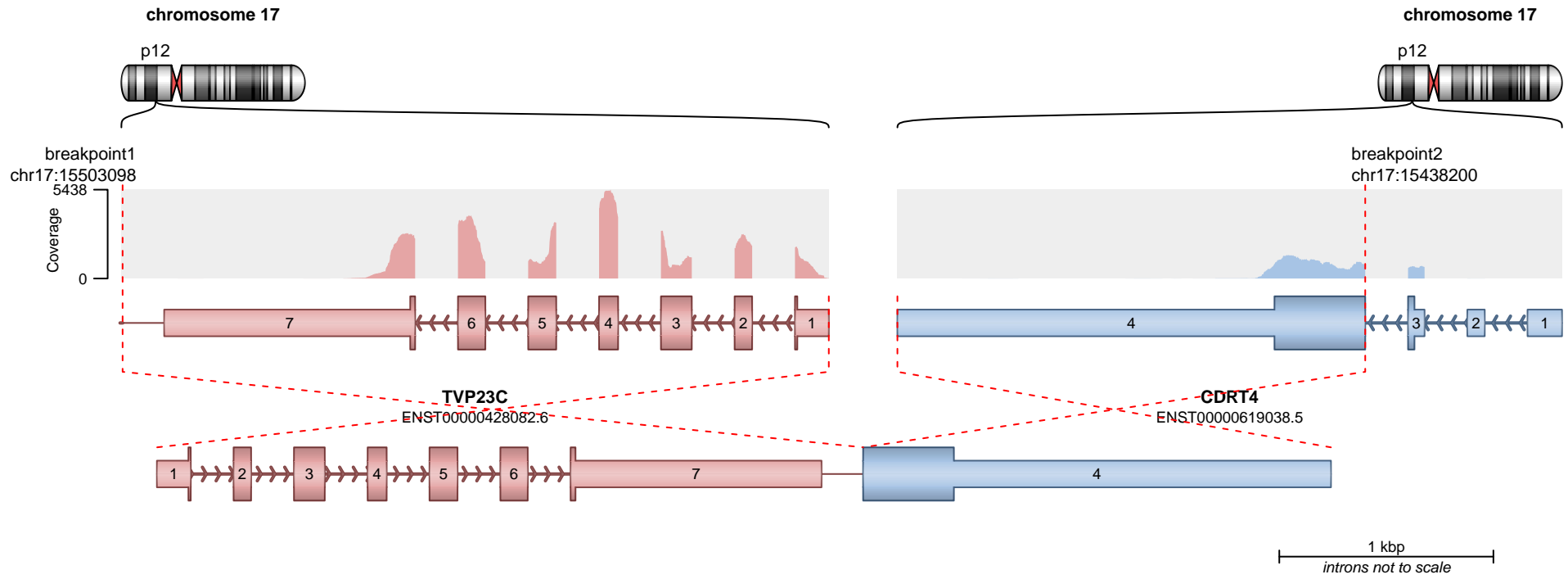
- translocation
- duplication
- deletion
- inversion



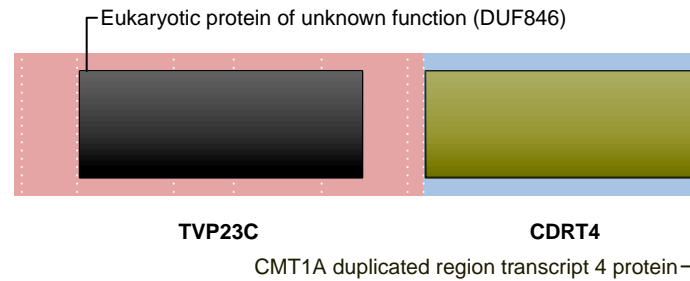
SUPPORTING READ COUNT

Split reads = 37
Discordant mates = 0

— translocation — deletion
— duplication — inversion



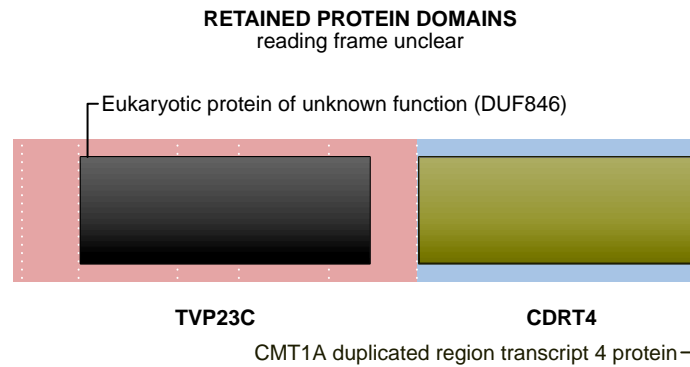
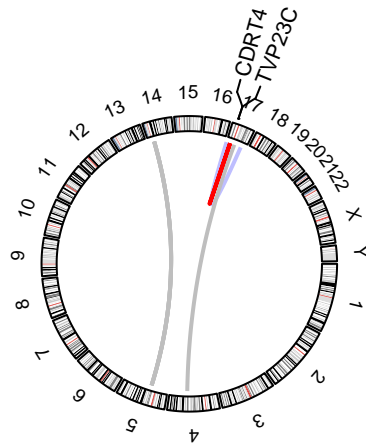
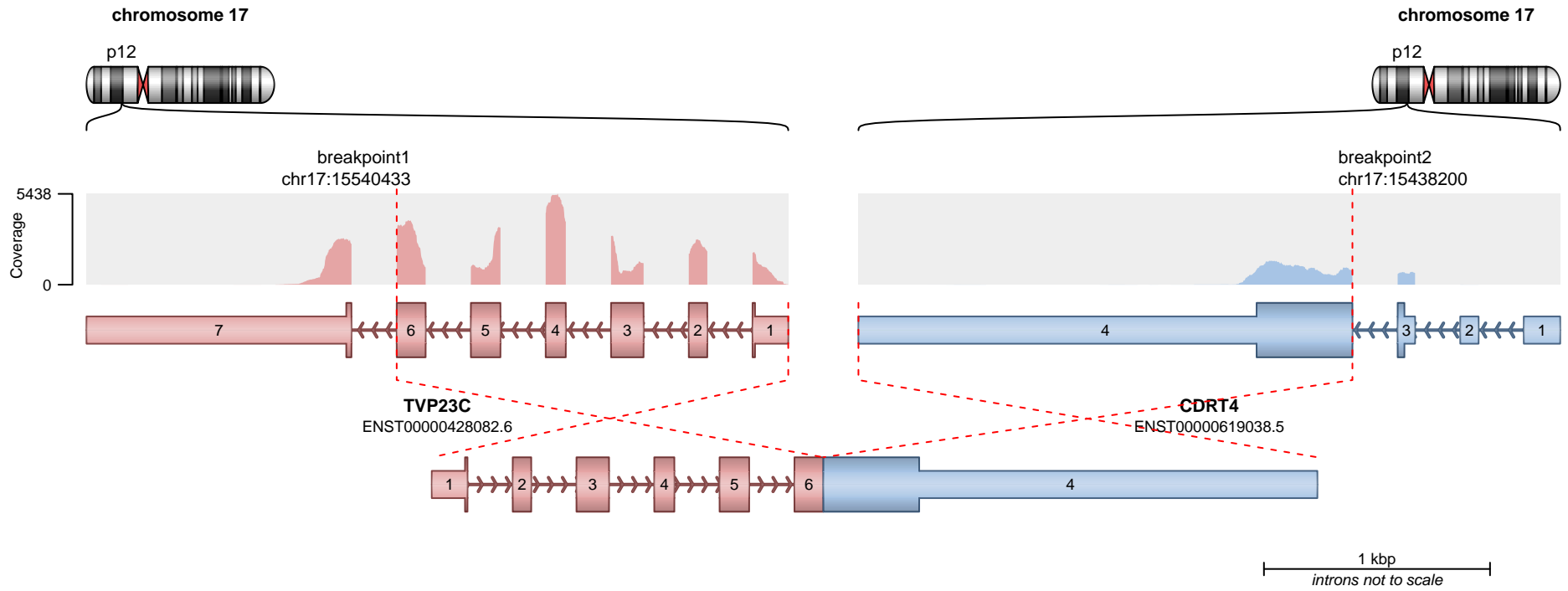
RETAINED PROTEIN DOMAINS
reading frame unclear



SUPPORTING READ COUNT

Split reads = 23
Discordant mates = 0

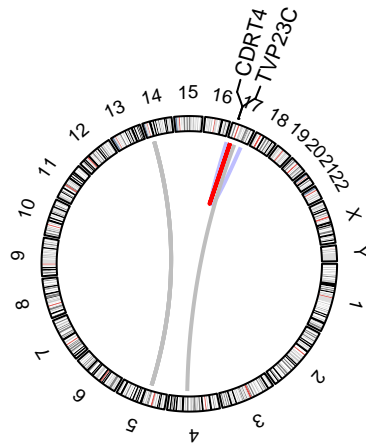
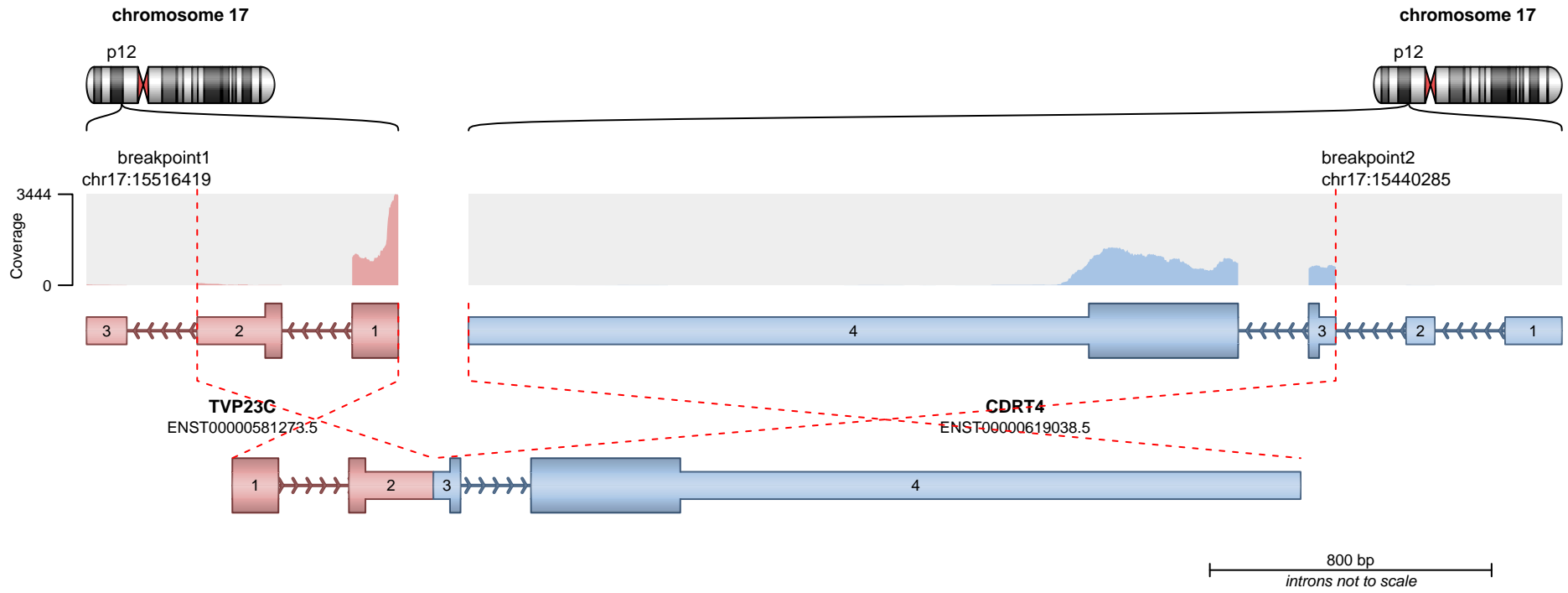
- translocation
- duplication
- deletion
- inversion



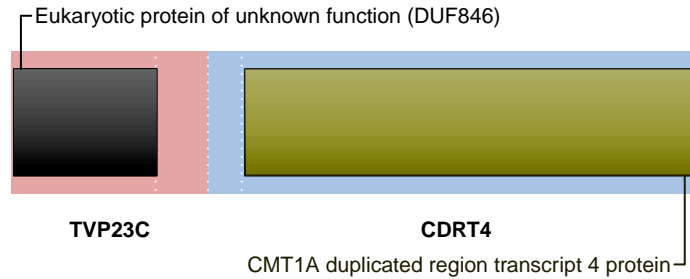
SUPPORTING READ COUNT

Split reads = 20
Discordant mates = 0

— translocation — deletion
— duplication — inversion



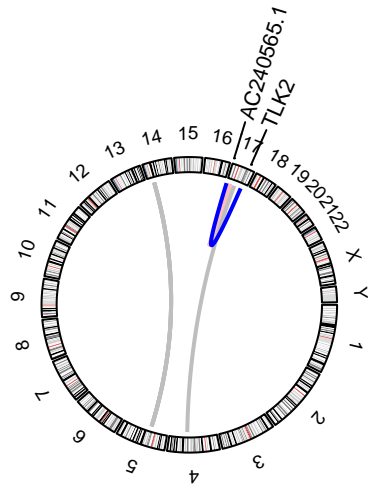
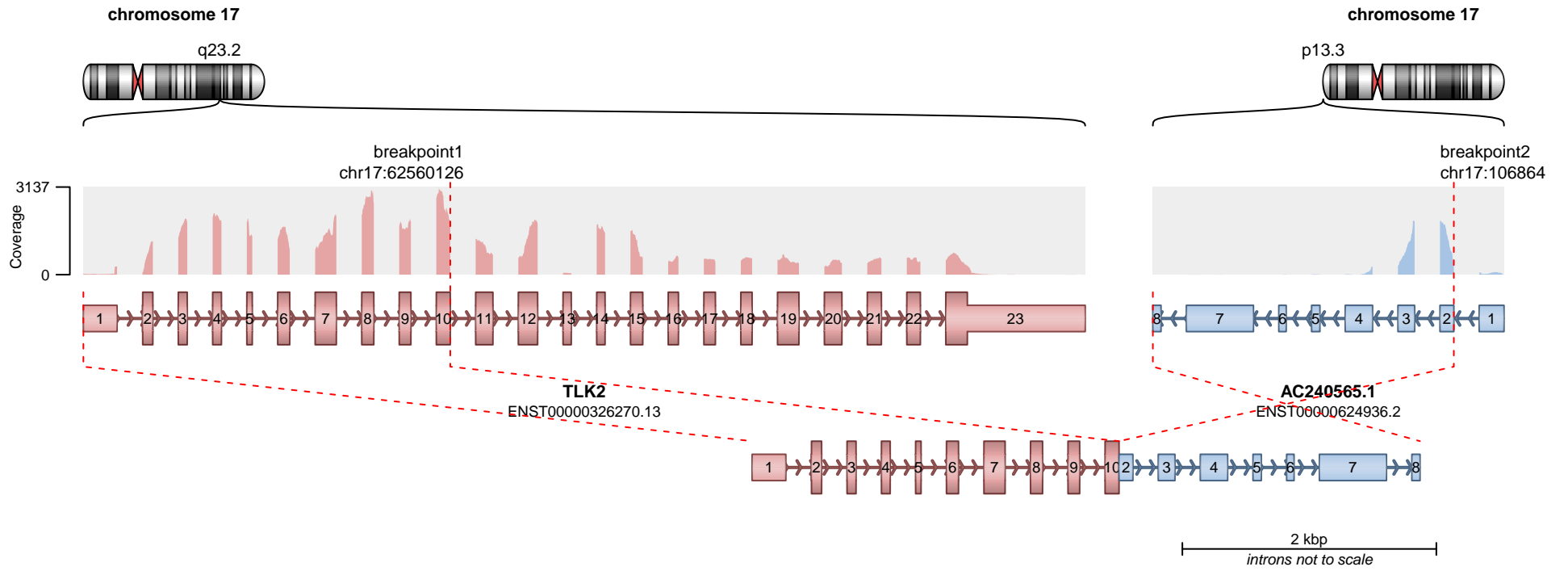
RETAINED PROTEIN DOMAINS
reading frame unclear



SUPPORTING READ COUNT

Split reads = 7
Discordant mates = 0

- translocation
- duplication
- deletion
- inversion

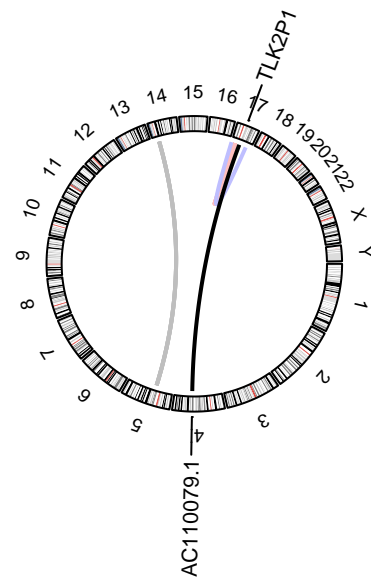
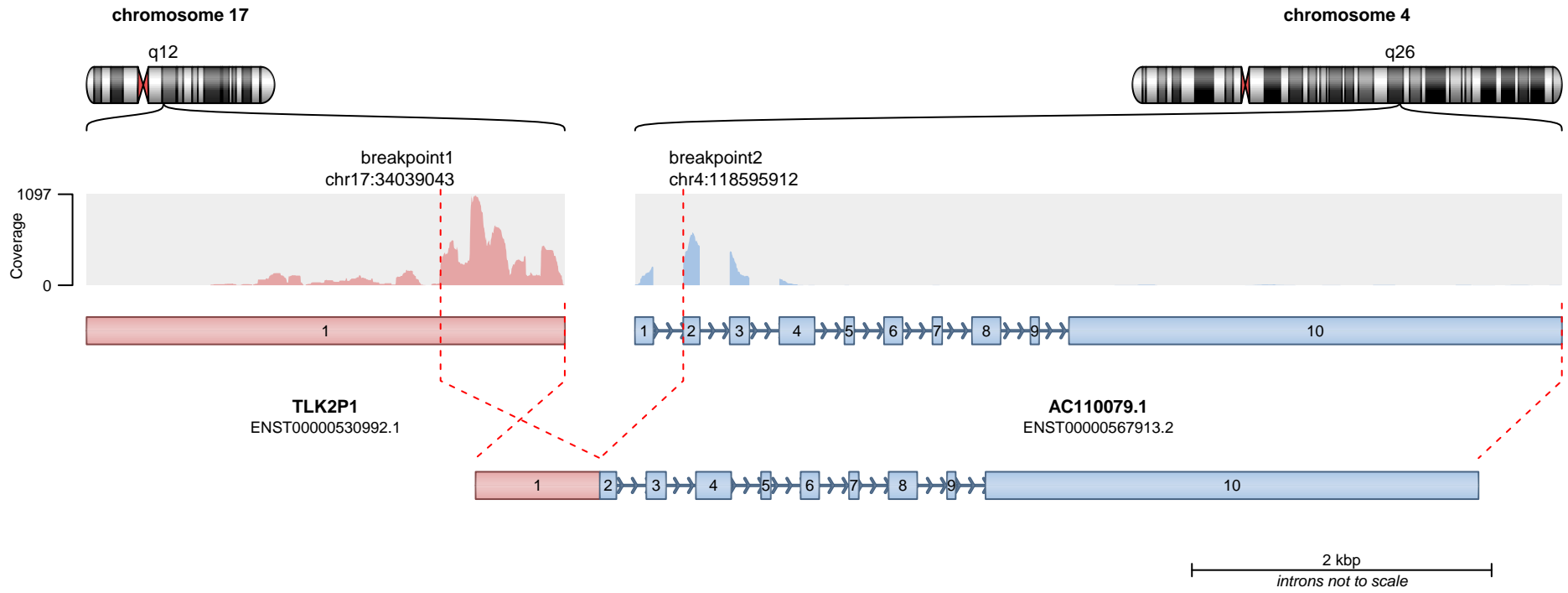


No protein domains retained in fusion.

SUPPORTING READ COUNT

Split reads = 49
Discordant mates = 0

— translocation — deletion
— duplication — inversion

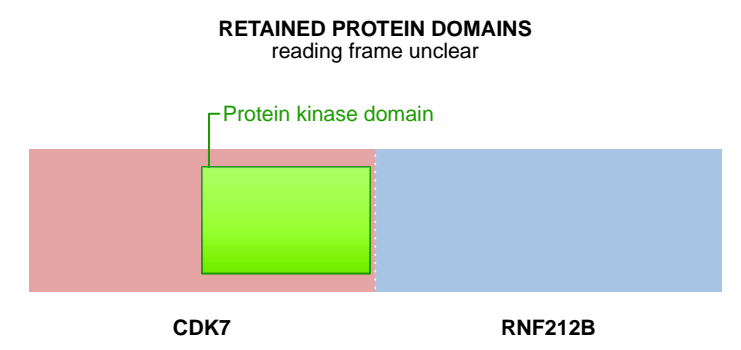
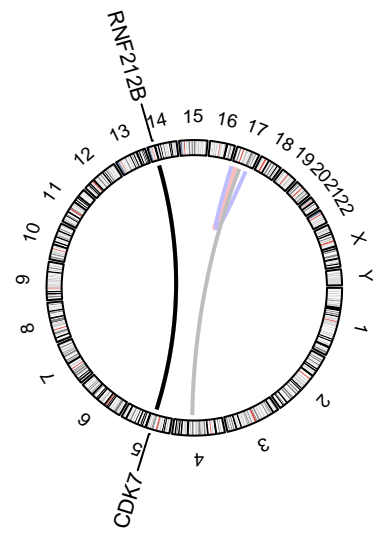
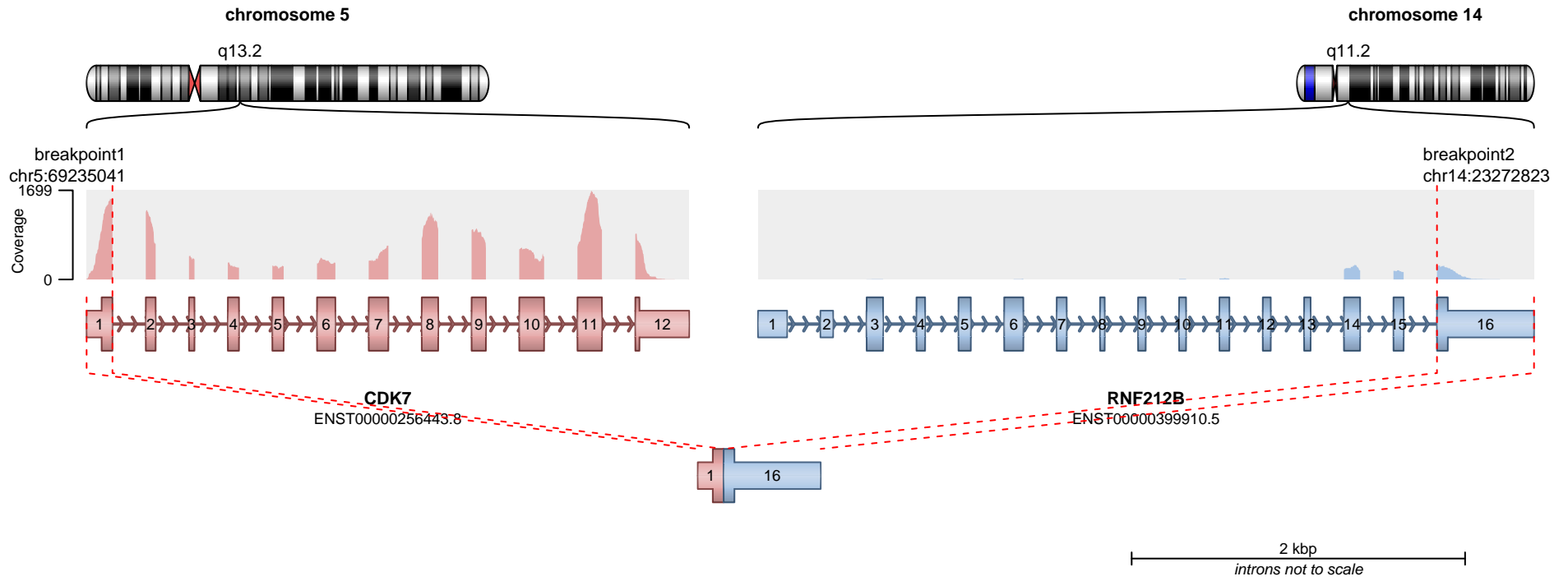


— translocation — deletion
 — duplication — inversion

Genes are not protein-coding.

SUPPORTING READ COUNT

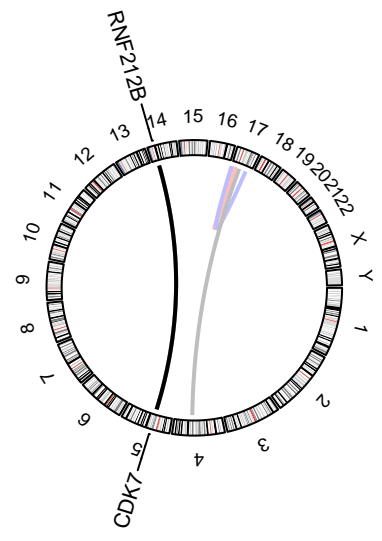
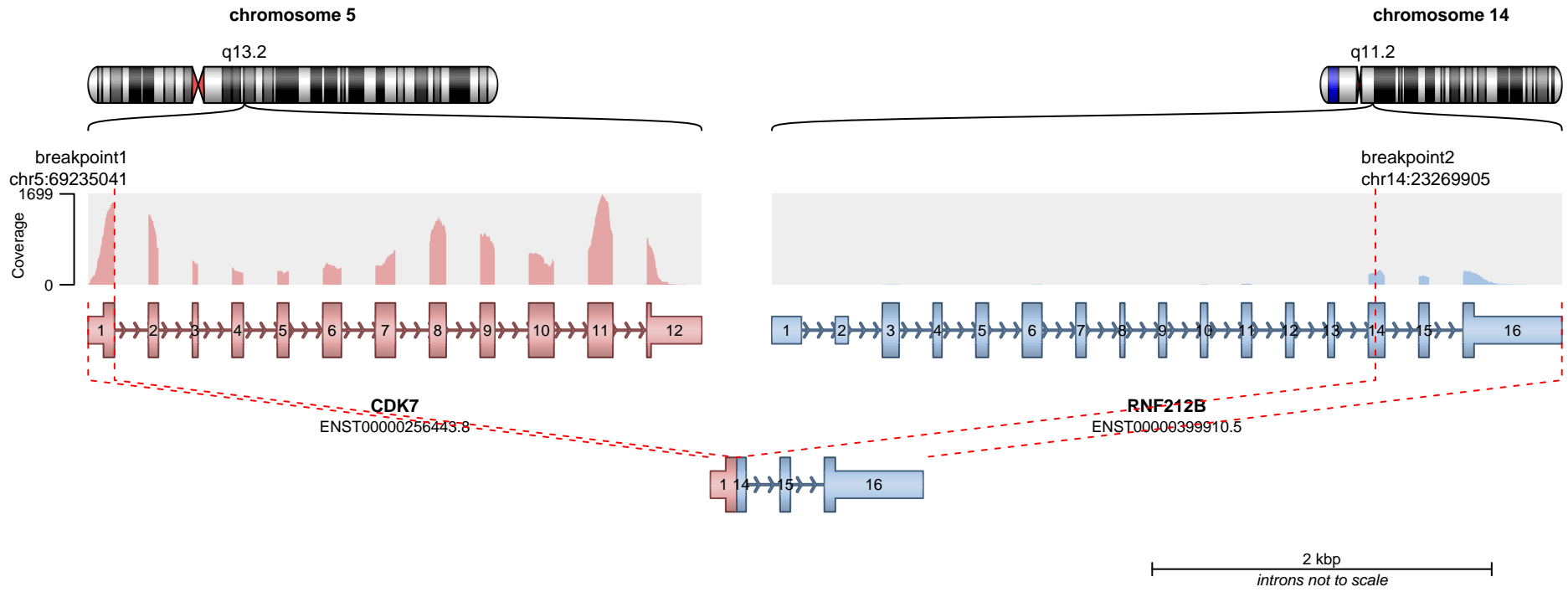
Split reads = 45
Discordant mates = 0



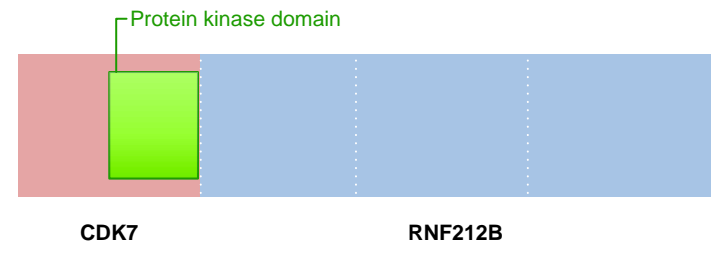
SUPPORTING READ COUNT

Split reads = 35
Discordant mates = 0

— translocation — deletion
— duplication — inversion



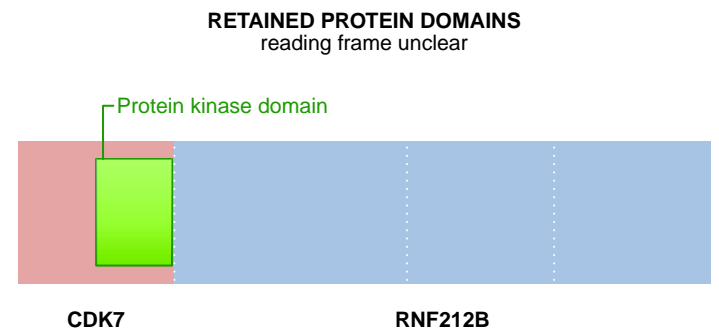
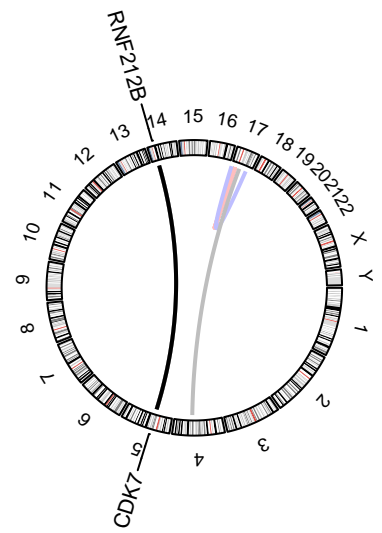
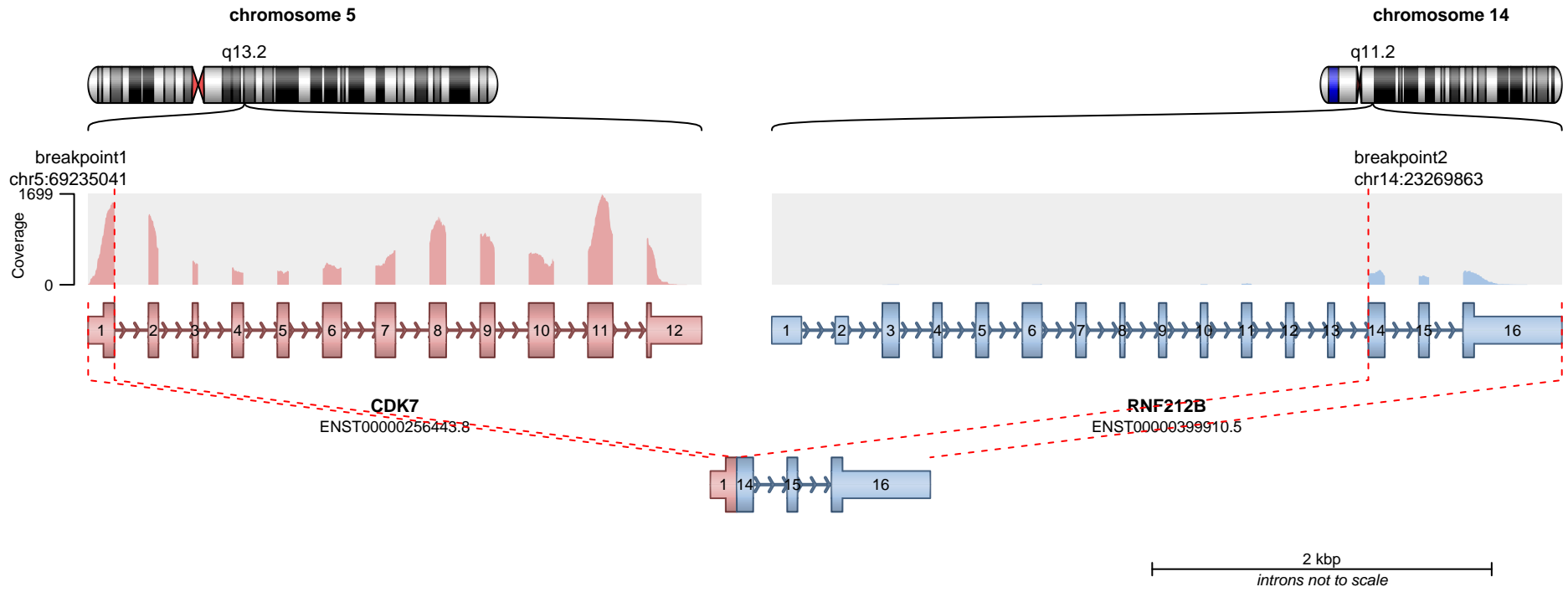
RETAINED PROTEIN DOMAINS
reading frame unclear



SUPPORTING READ COUNT

Split reads = 7
Discordant mates = 0

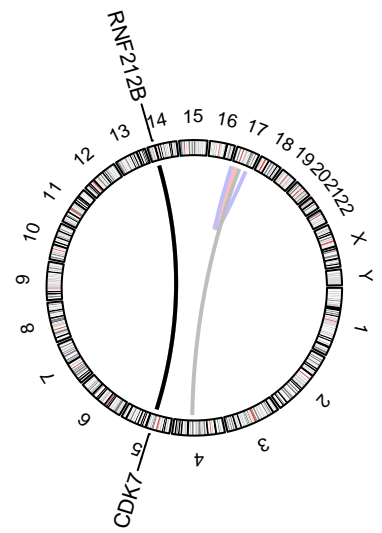
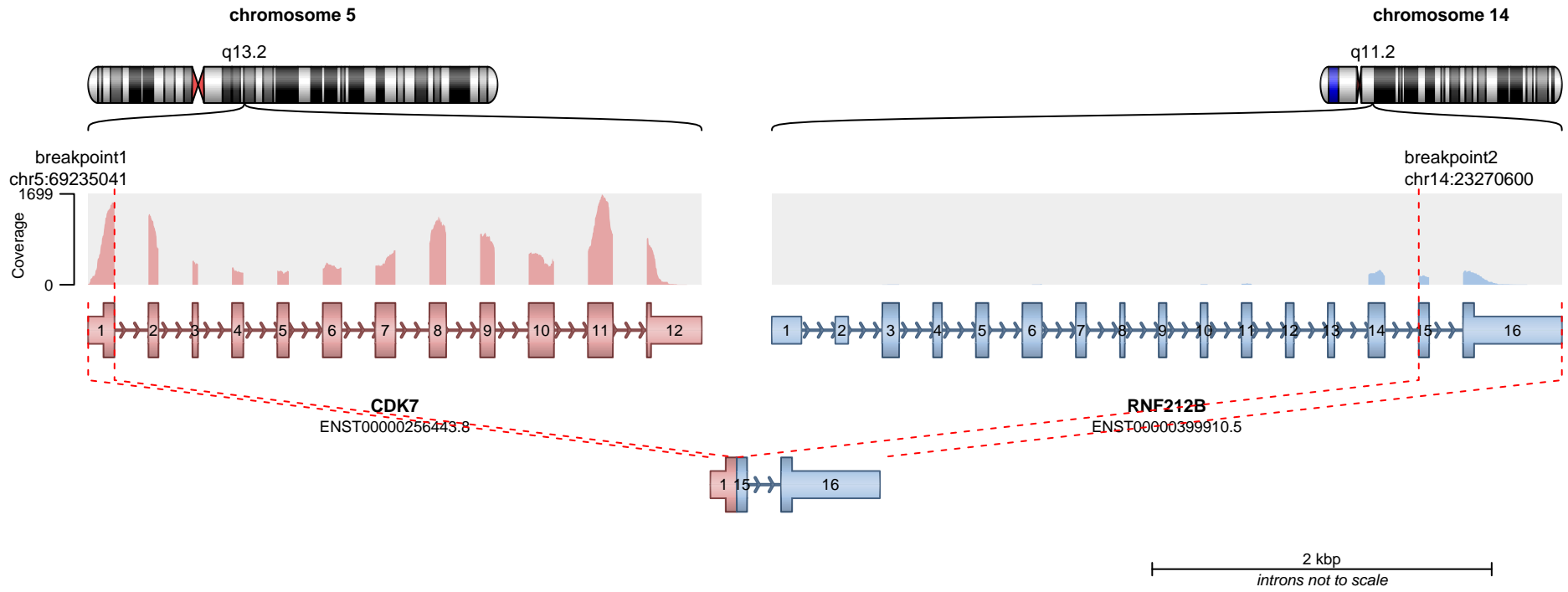
— translocation — deletion
— duplication — inversion



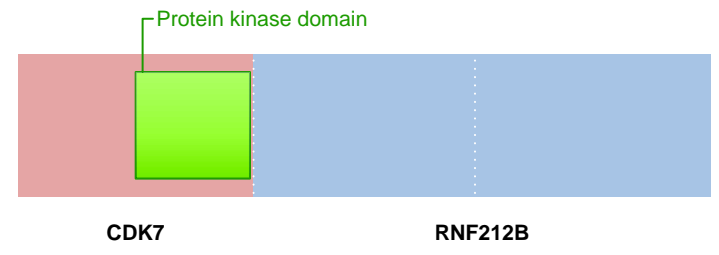
SUPPORTING READ COUNT

Split reads = 5
Discordant mates = 0

— translocation — deletion
— duplication — inversion



RETAINED PROTEIN DOMAINS
reading frame unclear



SUPPORTING READ COUNT

Split reads = 3
Discordant mates = 0

- translocation
- duplication
- deletion
- inversion